

Kansas



4-H FLASH

Central Kansas District

April, 2017

4-H CLUB DAY RESULTS

Congratulations to all who participated in 4-H Club Day. Those representing the District at Regional 4-H Club Day were:

Project Talks: Kendyn Biggs, Kirk Heimer, Josi Schrader, and Ella Tracy

Junior Demo./Ill. Talk: Boston Foust, Carson Fouard, Hensli Lofdahl, and Haley Thiel

Senior Demo./Ill. Talk: Grace Pfannenstiel, Paul Persigehl, Leah Hennes, and Baleigh Griffin

Public Speaking: Burke Clements, Sydney Hynes, Weston Schrader, and Sydney Clements

Vocal Music

Junior Solo: Caroline Stone and Haley Thiel

Senior Solo: Paul Persigehl

Dance

Senior Other Dance: Rebekah Thompson

Instrumental Music

Junior Solo: Emma Littich and Matthew Redden

Senior Solo: Paul Persigehl and Katie Stevens

Drama

Junior Reading: Timothy Ade and Emma Littich

Senior Reading: Leah Hennes and Burke Clements

Junior Other Talent: Josi Schrader

Gavel Game and Model Meeting qualifiers were recognized in the February 4-H Newsletter.

CLUB DAY THANK YOU!

What a fantastic day! 4-H Club Day was awesome! Thanks to everyone for a terrific day. Thank you to the organizational leaders for training room monitors, as it helped the judging run smoothly. Thank you for volunteering and assisting where needed! A BIG shout out to the 4-H Club Day Committee as they helped make the day possible too! Thanks for contributing in making the day a success!

FLASH DEADLINES FOR 2017

If you have something you would like in the *Flash*, be sure to email it to semaass@k-state.edu. The deadline for May is April 9, for June is May 8, for July/August is June 15, and for September is August 13.

SPRING PAPER CLOVER CAMPAIGN

The Spring Paper Clover Campaign with Tractor Supply Company will be April 26-May 7. Be sure to visit your local Tractor Supply Company during the campaign!



NATIONAL VOLUNTEER WEEK- CELEBRATE SERVICE

National Volunteer Week is April 23-29, 2017. The purpose of this week is to recognize and celebrate the efforts of volunteers on all levels. We would like to take this opportunity to recognize the many volunteers who make 4-H "work" for the Central Kansas District. There are more than 300 registered volunteer leaders involved in the Central Kansas District 4-H Program. We wish we could name them all here. Without all of you, 4-H would not be as successful as it is today.



We would like to challenge each and every 4-H member to call and/or write a volunteer and thank them for all of their dedication and hard work they put into the 4-H program here in the Central Kansas District.

HAVE YOU THANKED A 4-H VOLUNTEER TODAY?



ATTENTION ALL 4-H'ERS & PARENTS - ADD/DROP INFORMATION

There are several responsibilities as a 4-H'er and a 4-H parent. One of these responsibilities is the Adding and Dropping of 4-H Projects. It is **YOUR** responsibility to add or drop any projects by May 1. You will need to do this by going to <https://ks.4honline.com> and log into your account. After May 1, the system will not allow you to add or drop projects. Remember, 4-H members must be enrolled in the project area(s) they will be exhibiting at the county fair. If you have any questions, do not hesitate to contact either Extension Office.

TRACTOR SAFETY SCHOOL

Tractor safety school, for youth ages 14 and 15, will be held on Tuesday, May 30, in Room 109 at the Salina Extension Office from 8:30 a.m. to 4 p.m. Pre-registration is required by May 12. The cost is \$15 due at the time of pre-registration. For more information, please contact either Extension Office.

FOSTER CHILDREN GRANTS AVAILABLE FOR 4-H PROJECTS AND CAMP

Through the Kansas 4-H Foundation, \$5,000 in grant funds are available to support foster care families and the children in their care who are current or potential 4-H members. **Grants due May 1!** Please refer back to the February *4-H Flash* for more information.



4-H SHUTTERBUG PHOTOGRAPHY EVENTS



The Photo Team will also host two Shutterbug events this spring with a variety of workshops being offered at both events. For more information, visit <http://www.kansas4-h.org/events-activities/conferences-events/photography/index.html>

Shutterbugs at the Garden, Saturday, April 29, 2017 at Botanica in Wichita
Shutterbugs at the Zoo, Saturday, May 6, 2017 at the Lee Richardson Zoo in Garden City

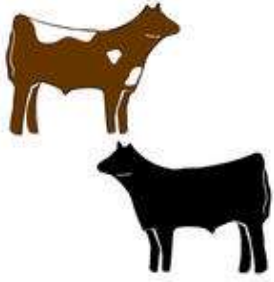
4-H CLUB DAY FACS JUDGING RESULTS

Intermediate Division

1. Acacia Pracht, Smoky View
2. Maddy Krueger, Solomon Valley
3. Owen Tracy, Cardinal
4. Shelby Stolzenburg, Willing Workers
4. Hadly Elkin, Gypsum Valley
6. Ben Schlatter, Boldly Go
7. Marshall Johnson, Cardinal
8. August Hulse, Pleasant Valley
9. Kirk Heimer, Gypsum Valley
10. Clare McKain, Delphos

Senior Division

1. Sydney Clements, Gypsum Valley
1. Morgan Davenport, Stoney Ridge
3. Madeline Lilak, Willing Workers
4. Erin Lange, Cardinal
5. Shane Miller, Willing Workers
6. Sydney Hynes, Cardinal
7. Trista Stevenson, Cardinal
7. Melissa Lidgett, Willing Workers
7. Burke Clements, Gypsum Valley
10. Shara Shepard, Pleasant Valley



CENTRAL KANSAS CLASSIC BEEF SHOW

This “Blow and Go” show will be held on Saturday, April 8th, 2017. The show is open to any bonafide 4-H and FFA members who have not yet reached their 19th birthday before January 1, 2017. There will be a special class for the 4-H’ers enrolled in a club in the Central Kansas District. The entry fee is \$15 per head, but after March 24th the fee will increase to \$20 per head. All fees must accompany registration. For registration information, please go to the District website (<http://www.centrankansas.ksu.edu/4-h>) and you will find a flyer under Upcoming Events and Online Registration. A concession stand will also be available for your convenience at this show with breakfast, lunch, and snack items available.

TAGGING & CHECK-IN FOR: MARKET MEAT GOAT & MARKET LAMB

The Districtwide tagging & check-in will be held May 3, in Salina (fairgrounds) and May 4, in Minneapolis (fairgrounds) from 4 to 6 p.m. for meat goats and lambs: Tags will cost \$3/tag. 4-H’ers will check-in their own swine projects through a separate process. If interested in exhibiting livestock at the State Fair or Junior Livestock Show, a nomination is an additional \$8/animal.

KANSAS STATE FAIR INFORMATION AND KANSAS JUNIOR LIVESTOCK SHOW

- DNA Hair Samples are required for each nominated animal for ALL SPECIES.
- There is a one-time/year \$20.00 fee if a nomination has to be returned to the family for any reason (i.e., incomplete form).
- Wether Dam Ewes and Commercial Ewes – Nominations and declaration form* sealed DNA hair sample envelope and official 4-H ear tag number are due June 15 for KSF and KJLS.
- Commercial Breeding Heifers – Nominations and declaration form* sealed DNA hair sample envelope and ear tag and legible tattoo are due June 15 for KSF and KJLS.
- Steers and Market Heifers – Nominations and declaration form* sealed DNA hair sample envelope are due by May 1 for KSF and KJLS.
- Market Lambs – Nominations and declaration form* sealed DNA hair sample envelope and scrapie tag number along with ear tag number are due by June 15 for KSF and KJLS.
- Market Hogs and Commercial Gilts – Nominations and declaration form* sealed DNA hair sample envelopes are due by June 15 for KSF and KJLS with valid PQA#. All animals must be ear notched and it must be drawn on the form.
- Meat Goats – Nominations, declaration form*, sealed DNA hair sample envelope, scrapie tag number, and ear tag by June 15 for the KSF and KJLS.

Nomination forms and DNA hair sample envelopes can be picked up at either Extension Office. Each nomination will cost \$8.00 and makes the animal eligible for both the KSF and KJLS. **Remember, a nomination is not an entry for the show.**

Declaration Form* - This form is required for all market animals for county fair, state fair, and the Kansas Junior Livestock Show. For the state fair and Kansas Junior Livestock Show, the due date for Market Beef – May 1; due date for Swine, Commercial Heifer, Sheep and Meat Goats – June 15. This form may be downloaded from: <http://www.asi.k-state.edu/research-and-extension/youth-programs/nominated-livestock/2017%20Declaration%20Form.pdf>

4-H COUNCIL NEWS

The May 4-H Council Meeting will be held on Monday, May 22, at 7 p.m. in the meeting room at the Minneapolis Extension Office. The theme is yet to be determined.

CHANGES TO YOUR EMAIL AND MAILING ADDRESSES

If you go to 4HOnline and change your mailing address or email address, please be sure to let the Extension Office know. We do not receive any notification that changes have occurred. To help make sure you will receive the 4-H Newsletter and other important information via the mail and email, please let us know. Thanks!



COUNTY FAIR INFORMATION

It is hard to imagine that the county fairs will be here before we know it. The planning has begun. Watch for more details in the future 4-H newsletters.

FAIR SUPERINTENDENTS AND ASSISTANT SUPERINTENDENTS

The dates for the Ottawa County Fair are July 18-21. The Tri-Rivers Fair will be on August 9-13 (pre-fair judging on August 8). Both fairs need superintendents and assistants. We need a lot of parents and youth to help ensure a smooth-sailing event. Do not forget that these leadership and citizenship opportunities can be counted in the 4-H member's record book and KAP. Interested 4-H members, parents and volunteers...should sign up online by April 2 by going to <http://www.centrankansas.ksu.edu/4-h>, and you will find a link under "Upcoming Events and Online Registration" for County Fair Superintendent and Superintendent Sign-up. Thanks to those who have already volunteered.

PHOTOGRAPHY THEMED CLASS AT THE COUNTY FAIRS

We are pleased to announce a new photography competition for the 4-H members at the County Fairs in the Central Kansas District. The theme for the 2017 4-H Photography Competition is **Nature's Beauty**. Nature's beauty is all around us, it may be colorful flora and fauna, a glorious sunset or vista, tiny creatures or marine life – in fact anything that depicts the glorious world that we live in is applicable to this exciting competition.

More details on this competition will be in the respective county fair papers. Be sure and check out the specifics when the fair papers are available later this year.



OTTAWA COUNTY FAIR – THEME: *Country Scenes & Children's Dreams*

The Ottawa County Fairboard loved the 4-H floats and the creativity the 4-H clubs display during the fair parade. Since not everyone can make it to the parade, the Fairboard wants the 4-H floats to remain on the fairgrounds intact until Wednesday during the fair. The Fairboard will reserve space for them to be displayed. At this time, the Fairboard has not set a specific release time for Wednesday.

TRI-RIVERS FAIR – THEME: *Capturing the Dream in 2017*

TRI-RIVERS FAIR KING & QUEEN CANDIDATES AND CONTEST UPDATE

The Fair King and Queen represent 4-H during the Tri-Rivers Fair in the 4-H and Open Class Departments, and at the evening fair events which includes the rodeo, Demolition Derby, etc. Since 4-H is part of the Tri-Rivers Fair, your club has a part by selecting the best candidates. The names for the King and Queen candidates are due to the Salina Extension Office by May 15th.

Candidates must be 14 years old before January 1, 2017. They must have been a member for a minimum of three years. The contest consists of résumé/essay, interview, and thank you note writing. Further details may be viewed [by going to the 4-H Youth Development page on the District website \(http://www.centrankansas.ksu.edu/4-h\)](http://www.centrankansas.ksu.edu/4-h) and [clicking on the link under County Fairs \(left hand side\), click on Tri-Rivers Fair, and then scroll down to 4-H King and Queen Info.](#)

Important dates for candidates include June 1 (deadline for résumé, essay, and bio), June 15 (required informational meeting for candidates), and August 1 (Royalty Reception and interviews).

SUMMER CAMPS AND OTHER OPPORTUNITIES FOR 2016

OZ-SOME 4-H CAMP INFORMATION

Don't forget, 4-H Camp will be held June 10-13, at Rock Springs 4-H Center. Rookie Camp will be held in two sessions: June 10-11 and June 12-13. Don't forget that due to limited space, Rookie Camp registrations are on a first come, first serve basis. We encourage individuals to not wait until the last minute to register as spots are filling up fast.



How to Register: An email was sent out to all active 4-H members/families as soon as the registration was open. Be sure to check your email! To register for 4-H Camp, go to <http://www.centrankansas.k-state.edu/4-h/4-hcamp/index.html> At this website you will find a link for the registration, camp counselor application, and a Parents Q & A document is there as well. When you register your child(ren) for 4-H Camp, remember that you will complete the registration information AND the medical information requested (this will replace the 4-H Participation Form for 4-H Camp). If your child(ren) have meds, they will need to be checked in with the Ambassadors and volunteers at the time of loading the bus. It will then be given to the nurses when the buses get to camp. You will pay online by credit card. Registration is due May 1 at 11:59 p.m.

CAMP COUNSELOR INFORMATION – Just as a reminder, counselor applications are **due April 13**. Interviews will be scheduled in Minneapolis on April 24 and in Salina on April 17 and 25. Interviews will be scheduled between 3:00 - 5:30 p.m. If these dates and times don't work for you, contact Sarah to set up an appointment for an interview. Camp Counselors will need to complete the 4-H Council Scholarship Application and meet the necessary requirements to be eligible for the 4-H Council Scholarship. The scholarship application is due with the Camp Counselor Application. If the scholarship application is approved, the counselors will not have to pay their registration fee.

SCHOLARSHIP INFORMATION – 4-H Members planning to apply for the **4-H Council Scholarship** will receive a coupon code when they go online to register (be sure to read the directions when you register your child(ren), otherwise you will miss the code and be charged an additional fee of \$5 if we have to apply the scholarship after you have completed the registration for your child(ren)). The scholarship will automatically be deducted before the payment will be required. It is essential that the 4-H member complete the 4-H Council Scholarship Application found on our district website under 4-H Youth Development, 4-H'er Forms and Documents. **The completed scholarship application will be due by the camp registration deadline of May 1 to either Extension Office (remember, it requires an organizational leader signature and the 4-H'er signature).**

Qualified for a Red Wheel Scholarship? If a 4-H member qualified for a Red Wheel scholarship, he/she can use this for 4-H Camp! The 4-H member will need to register as indicated above. Once he/she has registered, he/she will need to contact Dorothy (dbray@ksu.edu or 309-5850) at the Salina Extension Office to let her know that he/she has registered for camp. Once the registration has been confirmed, a check will be sent to the 4-H member/family. Please allow 7-10 business days for this to occur.

Camp Nurses

We are looking for individuals willing to attend 4-H Camp as one of three camp nurses. If you are interested, please contact Sarah (semaass@k-state.edu).

Remember...all campers will ride the bus. Full-time campers will ride it to and from. First session rookie campers will ride it to camp and someone will need to pick them up. Second session rookie campers will need their own transportation to camp, and then they will ride the bus home.

If your child(ren) have meds, they will need to be checked in with the Ambassadors at the time of loading the bus. It will then be given to the nurses when the buses get to camp.

WANTED: BUS DRIVERS FOR 4-H CAMP

Do you have a CDL-B license with passenger and school bus endorsement? Would you be available and interested in helping drive youth 4-H Camp on June 10 and back home on June 13? If not you, do you know someone who does? If so, please contact Sarah (semaass@k-state.edu) and Liz Diehl (diehliz@hotmail.com) as soon as you can. Note: Defensive Driving and First Aid training are preferred but are not required.





4-H CAMPFERENCE – LEADERSHIP UNDER THE BIG TOP

4-H Campference is for youth ages 12-14 (before January 1, 2017), and will be held June 27-30, at Rock Springs 4-H Center. Participants will experience the feel of a conference, while enjoying the 'camp' activities Rock Springs 4-H Center has to offer. This is a great transitional opportunity, as these tweens go from being a camper to attending educational conferences. 4-H Campference will feature workshops about opportunities in the 4-H program and how to better interact with others. Participants will meet other youth from around the state of Kansas.

A copy of the online registration should be completed and payment made to either Extension Office by May 15. Cost for Campference is \$275 or \$175 with an approved 4-H Council Scholarship Application. The 4-H Council Scholarship Application is due at the same time as the registration and fee is due. **Registration is due online by May 15**, but sign up early, as space is limited and will be filled on a first come, first serve basis. **Campference was full before the deadline in 2014, 2015, and 2016!** There will be a \$25 cancellation fee that will be charged to any 4-H member who decides not to attend after registering. This is not a local fee, but a state fee. The 4-H Council Scholarship WILL NOT cover this cancellation fee. Registration and detailed information is available in late March at <http://www.kansas4-H.org/>.

KANSAS 4-H SEWING CAMP

Registration is now open for the 2017 Kansas 4-H Sewing Camp!

What: Kansas 4-H Sewing Camp

Who: 13-18 year old 4-H members with sewing experience

When: May 30 – June 2

Where: KSU Manhattan Campus

Cost: \$215 or \$190 with an approved 4-H Council Scholarship Application.

Registration Deadline: Registration is due by April 15. Register early since it is limited to 30 participants. There will be a \$25 cancellation fee that will be charged to any 4-H member who decides not to attend after registering. This is not a local fee, but a state fee. The 4-H Council Scholarship WILL NOT cover this cancellation fee.



DISCOVERY DAYS: MAY 30 – JUNE 2, 2017

Discovery Days registration "Make a Splash" opened March 1 for youth 13 - 18 years of age (before January 1, 2017)! You can find the online registration at www.kansas4-H.org when you click on "4-H Event Registration." The deadline to register is 11:59 p.m. on April 20, 2017. Registration fees (checks made payable to CKD 4-H Council), scholarship application, and a copy of the registration confirmation are due no later than April 20, 5:00 p.m. to either Extension Office. In order to qualify for a scholarship through 4-H Council, individuals must complete the 4-H Council Scholarship Application and submit it at the same time as they pay their registration fees. The cost of Discovery Days is \$230 plus any additional class fees for non-4-H members. The cost for 4-H members is \$155 with an approved 4-H Council Scholarship Application, plus any additional class fees. We will be taking a bus to Discovery Days with McPherson County. There will be a \$10 fee to help cover the cost of the bus to Discovery Days. Registrations that are cancelled on or before April 20 will be charged a \$25 cancellation fee. The 4-H Council Scholarship WILL NOT cover this cancellation fee. Any cancellations made after May 1 will be charged the full amount. For 2017 – If you would like to be housed in a suite (2-4 people sharing a bathroom), you can upgrade your registration for \$35/person. Space is very limited and will be on a first come, first serve basis. Any and all requests for housing should be submitted when the delegate registers for Discovery Days.

NATIONAL 4-H HALL OF FAME OPPORTUNITIES FOR TEENS

The National 4-H Hall of Fame Induction Ceremony is scheduled for October 6, 2017 at the National 4-H Youth Conference Center in Chevy Chase, Maryland. The National 4-H Hall of Fame Taskforce is soliciting applications for a 4-H member to serve as the master or mistress of ceremonies and one to provide entertainment (vocal or instrumental) for this event. Each state may nominate one candidate for each. Applicants may be current 4-H members or 4-H alumni who are in college. Kansas 4-H is asking interested candidates to apply since Kansas can nominate one for each category. Interested candidates can find an application at <http://kansas4-H.org/> under "What's Hot." Applications are due by April 15 to Pam Van Horn (pvanhorn@ksu.edu).

**ATTENTION 4-H FAMILIES & ORGANIZATIONAL LEADERS:
CENTRAL KANSAS DISTRICT POLICY**

The Central Kansas Extension Board adopted a policy to go alongside the Kansas 4-H Policy regarding fundraising at the February 2014 Board Meeting. The policy is:



“4-H members MAY NOT solicit funds to help fund their individual 4-H projects. 4-H members may fundraise for a specific 4-H EDUCATIONAL trip. Donations given directly to a 4-H member ARE NOT tax deductible because they do not go to a 4-H club or group. Any fundraising programs by clubs or individuals MUST be approved by the 4-H Youth Development Agent; the funds must be used to further the 4-H mission; the account procedures must be appropriate and in accordance with the POLICY; and the 4-H name and emblem must be properly used.”

Any fundraising done in the name of 4-H needs to be approved by Sarah.

MINNEAPOLIS AREA CLUBS RED WHEEL SCHOLARSHIPS UPDATE

Below is a REVISED list of scholarship recipients for the Red Wheel sales. The Ottawa County 4-H Foundation met in March and wanted to recognize all 10 4-H members who sold more than \$250 worth of Red Wheel Product. These individuals will receive a scholarship to a 4-H sponsored event/activity of their choosing (i.e., 4-H Camp, Discovery Days, KYLF, etc.) or college scholarship (if a high school senior). These scholarships will need to be used by September 30, 2017.

1. Brody Hurtig, Livewires	\$100 scholarship
2. Cloe Doss, Livewires	\$75 scholarship
3. Olivia Boucek, Woodsdale	\$50 scholarship
4. Jaci Biggs, Solomon Valley	\$50 scholarship
5. Jacob Brown, Delphos	\$50 scholarship
6. Jordan Murphy, Pleasant Valley	\$25 scholarship
7. Johnna Perry, Livewires	\$25 scholarship
8. Bella Anderson, Livewires	\$25 scholarship
9. Kristin Martin, Pleasant Valley	\$25 scholarship
10. Kinsley Crosson, Solomon Valley	\$25 scholarship

SARAH IN THE MINNEAPOLIS OFFICE

Sarah will be in the Minneapolis Office from 10:30 a.m. – 5:00 p.m. on April 24. Be sure to come by and see her to express any concerns, new ideas or just to visit.

DISTRICT SERVICE PROJECT REPORT

The final reports are in from the two most recent service project led by the Central Kansas District 4-H Ambassadors.

During the Gavel Games and Model Meetings contest in January, 4-H members brought new Hats, Underwear, Gloves, and Socks to the contest to donate to those in need. The final count of what was collected is:

- 23 hats
- 14 pairs of underwear
- 38 pairs of gloves
- 53 pairs of socks
- 3 scarves

During 4-H Club Day in March, 4-H members brought baby items for the Ottawa County Health Department and the Salina Pregnancy Service Center. The final count of what was collected is:

- | | | |
|--------------------------------------|-----------------------------|--------------------|
| - 462 diapers | - 2 baby bottle cleaners | - 20 blankets |
| - 17 containers of baby wipes | - 7 diaper rash cream tubes | - 31 outfits |
| - 9 bottles of lotion | - 4 toys | - 3 hats |
| - 9 bottles of baby wash and shampoo | - 2 manicure sets | - 5 pairs of socks |
| - 6 baby powder containers | - 8 pacifiers | |
| | - 1 thermometer | |

Thank you to everyone who made a donation to help others within our communities!



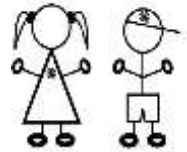
DISTRICTWIDE PROJECT NEWS

CLOVERBUD MEETINGS SCHEDULED

Come join us for Districtwide Cloverbud Meetings. Please RSVP for EACH meeting to Linda Lecklider at 785-823-2409 or Linda.lecklider@gmail.com. Meetings will be from 6:30 – 7:30 p.m. All meetings will be in Room 109 at the Salina Extension Office, with the exception of those with an asterisk (*). Those meetings (*) will be held at the Saline County Fair Office at 900 Greeley Ave, Salina. If there is interest in having some meetings held in Minneapolis, please contact Linda.

April 20*
May 18

June 15
July 20



Depending on the activities, participants may be asked to bring supplies or donate a small fee. You will be notified of any cancellations (if you RSVP).

HORSE PROJECT NEWS

Horse IDs

All 4-H horse project members must complete an ID on all horses they want to show at the County Fair, District Horse Show and State Fair. **The horse IDs are due by 5 p.m., May 1, to either Extension Office.** No horses can be substituted after May 1. If siblings are showing the same horse, all names must appear on the ID. Past original horse IDs may be up-dated. If all of the signature lines are used, then a new ID will be required.



Due to staff schedules, you may want to call before coming to either office to have your horse IDs signed to make sure someone will be there. If the appropriate staff member is not there, the IDs will be collected and will be signed later. You will be notified when you can pick them up.

The forms require:

- Only one picture-side view of horse with **all four legs and feet shown** with head turned toward the camera.
- The picture must be attached to the back, lower right corner.

Upon submitting the Horse ID...the 4-H member will be provided the original (which will be checked before shows). The Extension Office will photocopy for the file. **NO LATE FORMS will be accepted...No Exceptions.**

Horse Level Testing

Anyone wanting to take levels tests before District Horse Show Entries are due (June 1, 2017), should be studying for them now and then contact Bev so that a time may be set up to take the test. All District Horse Show participants should be certified in Level 1. For more information and to set up a time to take the written and grounds test, please contact Bev at classy3560@gmail.com. All testing must be completed BEFORE the district horse show entries are due.

Snaffle Bit Information

Horse snaffle bit projects are due into the local Extension Office by May 1. Along with the nomination, the 4-H member must submit the Horse ID and a \$10 fee. The nomination form, a copy of the horse ID (including a color picture of the horse) and fee will be sent to the State 4-H Office from the Salina/Minneapolis Office. Three-year old snaffle bit projects must have been nominated the previous year and did not have to be shown to be re-nominated. State Fair entries for these projects are due the end of July. For more information concerning the Snaffle bit project check the 4-H Horse Show Rule Book which can be found at <http://www.centrankansas.ksu.edu/4-h> under 4-H'er Forms and Documents.

K-9 CAPERS NEWS

K-9 Capers meets several times a month for training practice, coaching, games, and helping 4-H members build a great relationship with their dog. Two field trips are planned for this year as well as Canine Good Citizen testing through the American Kennel Club. To ask questions about the dog project, the Districtwide Leaders can be reached at k9capersckd4h@gmail.com or by calling Dianna Thompson or Tracy Repp.

Below you will find meetings for the next two months. Note that the meetings on Tuesday will be from 6:30 – 8:30 p.m. and the Saturday meetings will be from 8:30 – 11 a.m. Ag Hall and Kenwood Hall are located at the Saline County Livestock and Expo Center (900 Greeley Ave, Salina). Meetings for the next two months are:



April 4 – Ag Hall
April 15 – Time and Location TBD
April 25 – Ag Hall

May 6 – Time and Location TBD
May 16 – Ag Hall
May 27 – Ag Hall
May 30 – Ag Hall

Be sure to like us on Facebook. Search for K 9 Capers 4H Club.

VOLUNTEER OPPORTUNITIES FOR TEENS AND ADULTS



JUDGES WORKSHOP FOR VOLUNTEERS

A 4-H Judges Workshop will be held in Hutchinson at Our Redeemer Lutheran Church, 407 East 12th St., on Tuesday, April 25, 2017, hosted by Reno and Harvey Counties. Registration will be 3:30-4:00 p.m. with two sessions offered (Session I, 4:00-5:30 p.m.; Session II, 6:30-8:00 p.m. Supper will be served between the two sessions (5:30-6:30).

Sessions will be offered on Foods, Photography, Posters & Displays, Crops & Flowers, Arts & Crafts, Talks & Demonstrations, and Horticulture & Herbs.

Cost is \$14 if postmarked by April 17; \$20 if postmarked after April 17. Meal and all handouts are included in the registration cost.

For registration information, go to <http://www.reno.k-state.edu/4-h/>, and click on 4-H Judges Workshop under "What's Hot" or call the Reno County Extension Office at 620-662-2371.

TEEN LEADER AND VOLUNTEER TRAININGS – E-FORUMS

Mark your calendars for three virtual 4-H volunteer trainings from across the nation: October 5, November 2, and December 7, 2017. Topics in date order are: Cultivating an Environment for Growing True Leaders; "STEM"ing into Livestock – Growing True 4-H Leaders; and Helping 4-H'ers grow in Life and Work. Central Kansas District will plan to host these e-forums. Watch future 4-H Newsletters for more details as they become available.

KANSAS LEADERSHIP CENTER TRAINING

Gain insight in your role as a 4-H volunteer and how you can help youth understand leadership as a behavior. This opportunity is open to all 4-H alumni, volunteers, agents, and friends. For more information go to <http://www.kansas4hfoundation.org/klc/>. You can attend any or all of the trainings. The topics are: Leadership: A Framework for Making Progress; Leadership As Behavior – Not Position; and Teaching Leadership. Trainings will be held in various locations across the state and will be held from 10 a.m. – 4 p.m. with lunch being provided. These trainings are free thanks to the sponsorship of the Kansas 4-H Foundation.

RAISE YOUR HAND – KANSAS 4-H ALUMNI CAMPAIGN

We are very excited about an opportunity to engage 4-H alumni AND raise funds for Kansas 4-H! The national *Raise Your Hand* campaign will provide an easy way for proud Kansas 4-H alumni to reconnect with the national and state 4-H program in new and exciting ways. Kansas is committed to connecting with as many of the state's estimated 200,000 4-H alumni as possible during the campaign. **Only in Kansas will the generous partner, Stanion Wholesale Electric, Co., donate \$2 for each "hand raised" who registers (up to \$10,000).** In addition, Kansas will be competing for a \$20,000 1st place prize through the national registration challenge – **that means you can help Kansas raise up to \$30,000 by registering!** The *Raise Your Hand* campaign runs March 1 – June 30, 2017.

Raising your hand is as easy as 1, 2, 3:

1. **Raise Your Hand:** Go to www.ks4h.org to show your pride as a Kansas 4-H alum.
2. **Compete for Your State:** Raising your hand is a vote towards a \$20,000, \$10,000 or \$5,000 award for the states with the most alumni hands raised, as well a \$2 match from **Stanion Wholesale Electric, Co.**
3. **Pay It Forward:** Tweet, post and share your #4HGrown support and tag fellow alumni asking them to raise their hands for their state at www.ks4h.org.

This is an incredibly easy way for us to build our database of Kansas 4-H alumni and potential 4-H volunteers. Special thanks to Stanion Wholesale Electric, Co. for their generous matching donation. Go Raise Your Hand right away!

ACCIDENT INSURANCE

American Income Life provides 4-H groups with an Annual Group Accident Policy for all of our 4-H events. Some of our 4-H clubs have provided this insurance through the club and on the District level take out the insurance for individual Districtwide events.

In the 2017 4-H Council Budget, the Finance and Fundraising Committee included a line item for 4-H Council to provide this accident insurance on a District level. This was approved by 4-H Council at the January meeting. What does this mean?

- All 4-H members are covered.
- The volunteers who are covered under the District policy include:
 - o Organizational Leaders (i.e., 4-H Club Leaders)
 - o Districtwide Project Leaders (You must be on Sarah's Districtwide Project Leader list. If you indicated you want to serve as a Districtwide Project Leader through 4HOnline, but are not on Sarah's list, you will not be covered. Contact Sarah if you have any questions.)
 - o Master 4-H Volunteers
- If your club currently has accident insurance through American Income Life, you can let your policy expire for the above mentioned individuals. However, you may want to continue the insurance for your club project leaders (who are not 4-H members, but adult volunteers) as they are not covered under the District accident insurance as highlighted above.
- The cost is \$1/member (or volunteer)/year. The exception to this is our horse project members and leaders, the cost for them is \$2/member (or volunteer)/year.

If you have any questions regarding this insurance, please contact Sarah (semaass@k-state.edu).

LEADERSHIP WORKSHOP: TURNING GAMES INTO SOMETHING MORE – PART 1

Come learn how you can turn a game into something more than just a game! The workshop will be held on Thursday, April 6, from 7-8:15 p.m. at the Salina Extension Office, Room 109. Please register by going to <http://www.centrankansas.ksu.edu/4-H/> and click on the link under "Upcoming Events & Online Registration." **Please register by Thursday, March 30.** Remember... This workshop will count for the leadership workshop on the pin applications.



Part 2 of this leadership workshop will be held in Minneapolis on June 20. Watch for more details to come in a future *4-H Flash*. Participants do not need to attend both workshops, but part 2 will build off of part 1.

Who can attend? 4-H Members, Parents and Volunteers can attend! Participants will learn activities that they can take back to their clubs and other groups they work with or are a part of. Key lessons that will be emphasized are: teamwork, cooperation, leadership, problem solving, communication and decision making.



EXTRA

APRIL CHECK-UP

The 4-H Year is half over!!! Can you believe it? We are on the downhill slope for the 2016-17 4-H year! Where has the time gone? How are the 4-H projects coming? How has the club progressed during the first half of the year? Are we on track? Let's take a look...at our monthly progress...it's checkup time!

Review

- ___ 4-H Flash read and important dates marked on calendar.
- ___ Review highlights from the 4-H Flash at club meeting.
- ___ Review the article titled "Accident Insurance" on the previous page. Call or email Sarah with any questions you may have regarding this insurance.



To-Do

- ___ Project Leaders conducting meetings.
- ___ Check club mailbox at Extension Office.
- ___ Visitors' reported to Kate (klittich@ksu.edu).
- ___ Report on March 4-H council meeting.
- ___ Work on fair projects.
- ___ Check club's progress toward goals.
- ___ Club annual summary up-to-date.
- ___ Begin thinking of ideas for the club banner, float and club tour.

Promote/Recruit

- ___ Discovery Days promoted. Encourage 4-H members to complete on-line registration due April 20.
- ___ 4-H Campference promoted. Encourage 4-H members to complete on-line registration due May 15.
- ___ 4-H Camp promoted. Camp dates June 10-13. Registration is due online, May 1.
- ___ 4-H Rookie Camp promoted. Camp dates June 10-11 & June 12-13. Registration is due May 1 (limited spots available, encourage sign up before due date).
- ___ Sewing Camp promoted. Encourage 4-H members to complete on-line registration due April 15.
- ___ Promote Leadership Workshops: Turning Games Into Something More – Part 1 & Part 2
- ___ Make sure to highlight fair information as dates and details become available

Remember

- ___ Re-enrollment, enrollment, Drop/Add projects are due May 1 ONLINE for continuing and new members to participate in county fairs.
- ___ Horse ID deadline promoted, May 1, 5 p.m., either Extension Office.
- ___ Nominations for Tri-Rivers Fair King & Queen Candidates will be due May 15. Start talking about this opportunity in your club this month.
- ___ Camp registration is due May 1 and counselor applications are due April 14.

4-H COUNCIL FUNDRAISER UPDATE – MIXED BAG

Thanks to each of you who participated in our recent Mixed Bag Fundraiser! Items will be ready for pick-up by Organizational Leader between May 3-5 from the Extension Office. Please direct any questions to Robyn Prickett at stvelovesrobyn@juno.com or 785-493-0014.

April 2017



Sunday	Monday	Tuesday	Wednesday	Thursday	Friday	Saturday
						1
2 Fair Supt. & Asst. Supt. deadline to sign up online	3	4 K-9 Capers, Ag Hall, 6:30 p.m.	5	6 Leadership Workshop, Salina, Room 109, 7 p.m.	7	8 Central Kansas Classic Beef Show, Salina
9 FLASH articles due to Sarah	10 District 4-H Ambassador mtg. 7:00 p.m., Room 109, Salina	11	12	13 4-H Camp Counselor Appl. due	14	15 4-H Sewing Camp Reg. due online K-9 Capers, Time & Place TBD
16	17 4-H Camp Counselor Interviews, Salina	18	19	20 Discovery Days reg. due Cloverbud meeting, Saline Co. Expo Center, 6:30 -7:30 p.m.	21	22
23	24 Sarah in Minneapolis office 10:30-5:00 4-H Camp Counselor Interviews, Minneapolis	25 4-H Camp Counselor Interviews, Salina K-9 Capers, Ag Hall, 6:30 p.m.	26	27	28	29 Shutterbugs at the Garden, Wichita
30				UPCOMING DATES: May 1 – Add/Drop projects are due ONLINE 1 – Horse ID’s due 1 – 4-H Camp Registration due 3 – Sheep & Meat Goat check-in, Salina, 4 – Sheep & Meat Goat check-in, Minneapolis		