



July, 2023

Dear 4-H Families,

This newsletter is to serve as a supplement to the Tri-Rivers Fair 4-H Division Fair Paper; it is not meant to replace it. Please take a moment to thoroughly read through this newsletter to make sure you are equipped and ready for the Tri-Rivers Fair this year. If you have any questions, please do not hesitate to contact the Salina Extension Office at 785-309-5850.

Jacob & Kate

### FAIR PAPER, 4-H DIVISIONS

The fair paper is currently on the Central Kansas District website <http://www.centrankansas.ksu.edu/4-h> under County Fairs, Tri-Rivers Fair. We strongly encourage 4-H members and parents to check the fair paper periodically because when typos are found, we update the fair paper. Be sure to check the fair paper for the last date it was updated, as the date it was updated will be located on each page in the upper right-hand corner.

### TRI-RIVERS FAIR ENTRY CARDS

With the use of the FairEntry system, there is no need for anyone to handwrite their fair entry cards. Entry cards have been printed and are available for pick up at the Salina Extension Office. They are organized by club in alphabetical order by last name. We ask that the individual picking up the cards legibly fill out the Entry Card Sign-Out Sheet with the 4-H member's first and last name, club and name of who is picking them up. Because we have the cards placed right inside the first door as you enter the Extension Office, you can come anytime during the day or night to pick them up. Here are some important items to note:

- There will be **NO** exhibit cards for beef, meat goat, sheep, swine, horse, cat/hand pet, performing arts, and bucket calf.
- You will **NOT** pick up exhibit cards for fashion revue and the club banner.
- **Do not** separate the 2 entry cards.
- If needed, punch a hole in first entry card in upper left-hand corner to attach to exhibit.
- **Do not** fold the 2 cards together and hole punch.
- Use string or masking tape, as appropriate. If using tape, please use masking tape.
- Refer to the individual project(s) in the fair paper for specific instructions on attaching the entry card and/or any other items that need to accompany the exhibit.
- **Poultry Exhibitors** – Animal breed, age and variety will need to be written on entry card.
- **Rabbit Exhibitors** – Age and variety will need to be written on entry card.
- Call the Extension Office if you are missing entry cards.
- ***If you forget an entry card at home, a new one WILL NOT be printed for you.***

### ALL ANIMAL DISMISSAL

All animals will be released on Saturday after the Awards Ceremony.  
Load out of sheep and meat goats will not be after the sale.

Static Entry Card	
Exhibitor Name 4-H Club: ██████████	Exhibitor # 18
Age Division: Club: ██████████	4-H Age: Grade:
Class	
1: 4-H Banner	
Division	
4-H Building / Banners	
Entry Description	
Entry #: 218	County:
 <small>+1ENR8109</small>	
<small>PRP LAV BLU RED WHT GRN MUL</small>	
	

## FAIR CLEAN UP

Fair clean up for the Tri-Rivers Fair will be at 8:00 a.m. on Friday, August 4. Clean up will take place in the livestock areas, the 4-H Building, and Tony's Event Center, Great Plains Manufacturing Convention Hall for the Dog Show. We will have an assorted variety of donuts available for our volunteers. Please plan to attend.



### ATTENTION: DOG CARE & TRAINING 4-H MEMBERS

If you pre-entered a poster or display for the Tri-Rivers Fair, don't forget to bring it to the Fair Dog Show on August 5. One of the judges at the show will judge these exhibits. If it is not brought to the Fair Dog Show, it will not be judged. Don't forget to bring the judged poster or display to the Tri-Rivers Fair on Monday so we can display it inside the 4-H Building.

## CONFERENCE JUDGING DETAILS

### Sign-up

Members will need to go to <https://www.centrankansas.k-state.edu/4-h/county-fairs/tririvers/> to sign up for conference judging between midnight and 11:59 p.m. on Sunday, August 6. This is for exhibits in the 4-H building and does not include livestock. Individuals will sign up for conference judging times by project. We ask that you sign up for the earliest time you possibly can.



The 4-H divisions that DO NOT need to sign up for a conference judging time include:

- Cats (will need to sign-in and will be shown in class order)
- Hand Pets (will follow Cats and will need to sign-in, then be shown in class order)
- Performing Arts (pre-scheduled)
- Fashion Revue (pre-scheduled)

If you have any issues signing up for a conference judging time, please email [jlschmeid@ksu.edu](mailto:jlschmeid@ksu.edu), briefly describing your issue. Please know you will not receive an immediate response, but it will be responded to as soon as possible.

### When You Come to Conference Judging

Please plan to arrive 5 minutes before your scheduled conference judging time. For the exhibits in the 4-H building, conference judging occurs between the 4-H member and the judge. It is a great opportunity for the 4-H member to explain what they did, what they learned and what may have been challenging. The judge will ask questions, and these questions should be answered by the 4-H member. One or two adults may accompany the 4-H member for conference judging.

### Not able to Conference Judge In-Person?

If the 4-H member / 4-H family are not able to conference judge in-person, we ask that the Conference Judging Form be completed for **each individual** entry. This form may be downloaded from <https://www.centrankansas.k-state.edu/4-h/county-fairs/tririvers/>. Make sure this form is attached securely to each entry when brought in on Monday, August 7. In addition, sign up for a conference judging time as would be done if coming to the conference judging in-person. In the block where you put your last name, follow it with "Judging Form" (i.e., Last Name: *Smith Judging Form*).

## LIVESTOCK PEN ASSIGNMENTS

The livestock pens have been assigned. These can be found on our website at <http://www.centrankansas.ksu.edu/4-h> under County Fairs, Tri-Rivers Fair. Please call the Salina Office if you have any questions.



### ATTENTION HORSE EXHIBITORS

Horses will be able to be checked in on Tuesday, August 8, from 2:00 p.m. until 9:00 p.m., with the exception of during the parade, which starts at 7:00 p.m. Please go to the northwest stall area of Barn 6 and we will get you checked in and unlock your stall(s).

## ROYALTY RECEPTION & CROWNING CEREMONY

The reception will be Tuesday, August 1, 6:00 p.m., at Salina Heights Christian Church (NE corner of Roach and Cloud Streets). Plan to enter through the doors on the east side of the building.

The crowning ceremony for the Tri-Rivers Fair King & Queen will take place on Wednesday, August 9 at 7:00 p.m. in the Tony's Pizza Event Center, Great Plains Mfg. Convention Hall.

## **ATTENTION: 4-H FOODS, FOODS PRESERVATION, FIBER ARTS AND CLOTHING COUNTY FAIR EXHIBITORS**

### **Required for County and State Fair - Check your County Fair Paper for County Fair Requirements:**

In clothing, fiber arts and other exhibits needing a cloth label, a label may be made out of cloth with a permanent or laundry type marker. Labels should be about 3" x 2 ½" in size and include exhibitor name, class number and Central Kansas District.

Food preservation labels need to include: 4-H member's name, class number, product, altitude where processed, canning method, processing time, pressure (psi), date processed (including month and year), and Central Kansas District. A template can be found in the fair paper under the Food Preservation 4-H Division.

Food labels need to include: food product name, 4-H member's name, class number, and Central Kansas District. A template can be found in the fair paper under the Foods and Nutrition 4-H Division.

### **ATTENTION: 4-H PHOTOGRAPHY EXHIBITORS**

If you are enrolled in photography, please make sure you understand the information below as you prepare for the county fair.

- Photographic subject matter is expected to follow 4-H standards. For a sense of prohibited subject matter, review the Kansas 4-H member Code of Conduct; in general, if it is not allowable at a 4-H event, it is not allowable in a 4-H photograph at the County or State Fair.
- Photos with live subject(s) on railroad right of way or taken from railroad right of way property will not be displayed in Kansas 4-H Photography and may receive a ribbon penalty.
- Copyright protections must be observed.
- Decisions as to display and/or penalties will be made by the Photography Department Superintendent and Extension Staff.



### **HELP WANTED FOR FAIR FUN DAY**

There are still opportunities for 4-H Members to share their projects at Fair Fun Day, Saturday, August 12, from 9:00 a.m. to 12:30 p.m. Are you looking for some leadership experience, or the chance to encourage kids to try a new project, or recruit new kids to join 4-H? Come spend an hour sharing your favorite 4-H project with young kids.

You could also help as a counselor to take the youth from project station to project station. We would need you for the whole morning and you could enhance the fair experience of almost 50 kids! If you would be willing to help, please call or email Kate ([klittich@ksu.edu](mailto:klittich@ksu.edu)) at the Extension Office.

### **FAIR FUN DAY**

Come join the fun and learning! We especially want you to invite your friends (even those not in 4-H), neighbors and family members. This is a great opportunity to enjoy a variety of different 4-H projects and have some fun at the fair.

- WHO:** Children ages 5-10 years old  
**WHEN:** Saturday, August 12, 9:00 a.m. - 12:30 p.m.  
**WHERE:** 4-H Building at the Fairgrounds  
**WHAT:** Hands-on 4-H projects such as foods, crafts, and animals followed by a free lunch  
**HOW:** Register at the Pop Stand in the 4-H Building during the fair  
**COST:** FREE!

### **AWARDS CEREMONY**

The 4-H Awards Ceremony will be held Saturday, August 12 at 7:00 p.m. in the 4-H Building. There will be approximately 75-100 chairs that will be placed, but it is still recommended that you bring a lawn chair just in case.

Exhibits in the 4-H Building can be picked up immediately following the 4-H Awards Ceremony.

## 4-H POP STAND & BUILDING MONITORS

Please make sure your club signs up for working the Pop Stand and also to serve as Building Monitors. Below is the current schedule. More details can be found in the April/May 4-H Newsletter. The link for the Pop Stand and Building Monitors is: <https://tinyurl.com/2023PopAndBuilding> If you have questions, please call the Salina Extension Office at 785-309-5850 or you can email Michele at mhennes@ksu.edu. Thank you!



### FAIR POP & CONCESSION STAND

#### Wednesday, August 9

8 a.m. – 11 a.m. \_\_\_\_\_ Boldly Go  
11 a.m. – 2 p.m. \_\_\_\_\_  
2 p.m. – 5 p.m. \_\_\_\_\_ Gypsum Valley  
5 p.m. – 7 p.m. \_\_\_\_\_ Gypsum Valley  
7 p.m. – 9 p.m. \_\_\_\_\_ Gypsum Valley

#### Thursday, August 10

9 a.m. – Noon \_\_\_\_\_ Sunny Valley  
Noon – 3 p.m. \_\_\_\_\_ Boldly Go  
3 p.m. – 6 p.m. \_\_\_\_\_ Cardinal  
6 p.m. – 8 p.m. \_\_\_\_\_ Cardinal

#### Friday, August 11

9 a.m. – Noon \_\_\_\_\_ Boldly Go  
Noon – 3 p.m. \_\_\_\_\_ Friendly Valley  
3 p.m. – 6 p.m. \_\_\_\_\_ Friendly Valley  
6 p.m. – 9 p.m. \_\_\_\_\_

#### Saturday, August 12

9 a.m. – Noon \_\_\_\_\_ Willing Workers  
Noon – 3 p.m. \_\_\_\_\_ Willing Workers  
3 p.m. – 5 p.m. \_\_\_\_\_ Smoky View  
5 p.m. – 8 p.m. \_\_\_\_\_ Smoky View

### 4-H BUILDING MONITORS

#### Wednesday, August 9

5 p.m. – 7 p.m. \_\_\_\_\_ Gypsum Valley  
7 p.m. – 9 p.m. \_\_\_\_\_ Gypsum Valley

#### Thursday, August 10

5 p.m. – 7 p.m. \_\_\_\_\_ Cardinal  
7 p.m. – 9 p.m. \_\_\_\_\_ Cardinal

#### Friday, August 11

5 p.m. – 7 p.m. \_\_\_\_\_ Willing Workers  
7 p.m. – 9 p.m. \_\_\_\_\_

#### Saturday, August 12

9 a.m. – Noon \_\_\_\_\_ Sunny Valley  
Noon – 3 p.m. \_\_\_\_\_ Friendly Valley  
3 p.m. – 5 p.m. \_\_\_\_\_ Smoky View  
5 p.m. – 7 p.m. \_\_\_\_\_ Smoky View  
7 p.m. – 9 p.m. \_\_\_\_\_ Boldly Go

### CONCESSION/POP STAND

The Finance and Fundraising Committee, through 4-H Council, will be serving lunch from 11 a.m. - 1 p.m., Tuesday through Saturday, and set up will begin at 10 a.m. at the 4-H Concession/Pop Stand during the fair. The menu for the week is as follows:

Tuesday	Pizza	\$3/slice or \$6/meal deal
Wednesday	Walking Taco	\$5/each or \$8/meal deal
Thursday	Pre-Pkg Individual Salads	\$5/each or \$8/meal deal
Friday	Loaded Potato	\$5/each or \$8/meal deal
Saturday	Walking Taco	\$5/each or \$8/meal deal

A meal deal includes an entrée, drink, & chips OR entrée, drink, & candy bar.

When recruiting your club members, please keep the following in mind. The Pop Stand operates smoothly with at least one adult and two or three youth. However, during the time frame of 10 a.m. to 2 p.m. we are asking for two adults and four youth to better help with lunch preparation, serving and clean up.



***Thank you to the Clark, Mize & Linville Chartered Law Firm and Accessible Home Care, LLC for your sponsorship of the Pop Stand!***

**All proceeds support the Central Kansas 4-H Council. Don't forget to sign up to volunteer. It is a great opportunity to help the Council provide event scholarships and other great activities.**

## AG OLYMPICS – NEW DAY & TIME



Toward the end of the fair we are all feeling tired and grumpy, so why not head over to the annual Ag Olympics competition where there are all sorts of games you and your friends can work on together? *The games are not only for the youth, but parent/alumni teams are encouraged as well!* But, of course, you can have just as much fun sitting in the stands watching participants spin around on a show stick and try and walk in a straight line or watching them try to be the fastest human wheelbarrow. Ag Olympics will follow Round Robin (approximately 4:00 p.m. on Saturday, August 12), so be sure to hightail it over to have the time of your life. Hope to see y'all there.

## PHOTOGRAPHY AND FCS JUDGING CONTESTS – NEW DAY & TIME

The 4-H Photography Judging Contest and the Family & Consumer Sciences (FCS) Judging Contest will be on Friday, August 11, 3:00 – 6:00 p.m. in the 4-H Building. Be sure to drop by and participate in these judging contests as your schedule allows! You do not need have to be enrolled in a specific project area to participate.

## THANK YOU NOTE TABLE

A thank you note table will be available during the fair on Friday from 2:00 p.m. – 4:00 p.m. Come by the 4-H Building during this time to show your appreciation to our 4-H sponsors and write a thank you note. It will not take up a lot of your time. You can write as many thank you's as you have time for. Our sponsors need to hear from you and how you appreciate their sponsorship!



## 4-H SPIRIT AWARD

The Central Kansas District 4-H Council will again be sponsoring the 4-H Spirit Award. There will be a location in the 4-H Building where you can pick up a nomination form and submit it for individuals (youth and adults) you have seen:

- Make a positive impact on the fair and/or 4-H members.
- Go above and beyond to help with 4-H activities or aid 4-H members.
- Demonstrate a positive attitude and forward thinking during the county fair.
- Provide us with details and information thru the Spirit Award Nomination Form.

The 4-H SPIRIT AWARD will be given to the individual(s) who fulfill(s) these characteristics. These nominations will be due no later than 12:00 p.m., noon on Saturday during the County Fair.

## FOODS AND FOODS PRESERVATION – TUESDAY, AUGUST 8

All food preservation will be judged at the same time as the 4-H Food Division, **Tuesday, August 8**, with the foods judges (1 or 2 judges will be designated for Food Preservation exhibits). This division is judged based on the individual judging schedule as members signed up for times. **Special Note:** Perishable exhibits **ARE NOT ELIGIBLE** for State Fair, even if they get a purple ribbon.

## NEW FOODS & NUTRITION RULE

Please be sure to take note of Rule #22 in the 2023 Tri-Rivers Fair Paper. It states:



22. For food safety purposes, any entries with frostings and fillings (including glazes), must calculate the amount of sugar in the frosting/filling recipe only. Calculation must be attached to the entry, or the placing will be lowered one ribbon when judged. Frosting and fillings need to contain more than 65% sugar for safety. Examples on how to calculate this percentage are included in the publication located at:

<https://bookstore.ksre.ksu.edu/pubs/MF3544.pdf>

## CLOTHING CONSTRUCTION, CLOTHING BUYMANSHIP, & FIBER ARTS

All Clothing Construction, Clothing Buymanship, and Fiber Arts items need to be brought during exhibit check in. Please consult the fair paper and fair schedule for judging details.

## JUDGING SCHEDULES (next 2 pages)

All schedules are also available on the District website under 4-H Youth Development, County Fairs, Tri-Rivers Fair (right hand side of the page).

### PERFORMING ARTS – SUNDAY, AUGUST 6 – NEW DAY & TIME

Be sure to take note that in 2023, the Performing Arts division has moved to Sunday, August 6<sup>th</sup> for judging. A special encore performance opportunity will be available during the Fashion Revue at 7:00 p.m. on Sunday, August 6<sup>th</sup> for the Reserve and Grand Champions in each class (Junior and Senior).

We have assigned times to individuals and groups based on the pre-entries. Participants are asked to check-in with the Superintendent or Assistant Superintendent at least 15 minutes prior to your assigned time. We can be flexible with the time if need be, but if you don't check-in, we don't know that you are not a scratch. Thank you!

#### Junior Performing Arts

3:00 Kyson Griffin, vocal  
3:05 Eddie Littich, vocal  
3:10 Brik Johnson, vocal  
3:15 Kierah Ulloa, vocal  
3:20 Eddie Littich, instrumental  
3:25 Soren Johnson, vocal  
3:30 Eddie Littich, drama  
3:35 Brik Johnson, instrumental  
3:40 Marlie Potter, dance  
3:45 Johnson/Littich Trio  
3:50 Matthias Schlatter, instrumental  
3:55 Brik Johnson, drama



#### Senior Performing Arts

4:00 Brynna Anderson, vocal  
4:05 Matthew Redden, instrumental  
4:10 Brynna Anderson, vocal  
4:15 Caleb Schlatter, instrumental  
4:20 Matthew Redden, vocal  
4:25 Brynna Anderson, vocal  
4:30 Matthew Redden, drama  
4:35 Brynna Anderson, vocal  
4:40 Matthew Redden, vocal



#### **SEW YOU'RE MODELING YOUR OUTFIT AT FASHION REVUE...**

When you are writing your script for Fashion Revue, keep these helpful hints in mind:

- Start with an attention-getting sentence.
- Share a few facts about YOU. What is your name? What 4-H club do you belong to?
- Tell a few facts about your outfit. What are you wearing? Did you make it or buy it? Does it have any interesting features and/or accessories?
- Show the judge you know about your project. How much did it cost? How much time did it take? What do you like best about your outfit? Where do you plan to wear it?
- Tie in any fun stories about the making/buying of your outfit.
- Finish your script with a fun sentence to tie it all together.



## FASHION REVUE JUDGING

The fashion revue judging will take place on Sunday, August 6. Fashion Revue will begin at 1:00 p.m. Please see next page for the judging schedule. **Judging will be in the Great Plains Manufacturing Convention Hall at Tony's Event Center, 800 The Midway, Salina.** Please enter through the north doors to the Great Plains Room. **No animals are allowed for this contest.**

*\*\*\*An evaluation form must be filled out and presented at the time you are judged. Entry cards will be available for you to pick up at judging.\*\*\**

*\*\*\*Boys and girls intermediate and senior divisions must also present a cost per wear sheet.\*\*\**

*\*\*\*Please be ready at least 15 minutes before your scheduled time for Fashion Revue Judging.\*\*\**

**The Evaluation Form and Cost Per Wear Sheet can be found in the fair paper under the Fashion Revue 4-H Division.**

### 2023 Tri-Rivers Fair 4-H Fashion Revue Judging Schedule

Judge 1			Judge 2		
#	Name		#	Name	
	<b>Senior Construction</b>			<b>Intermediate Purchased</b>	
1:00	Pracht	Acacia	1:00	Escobedo-Baltazor	Maria
1:05	Nichols	Stone	1:05	Fritz	Bailey
1:10	<b>Junior Construction</b>		1:10	Ulloa	Kierah
1:15	Mettlen	J.D.	1:15	Hubbard	Siayah
1:20	Ast	Ames	1:20	Rich	Kailyn
1:25	<b>Intermediate Construction</b>		1:25	Potter	Marlie
1:30	Escobedo-Baltazor	Maria	1:30	Rich	Cadence
1:35	Fritz	Bailey	1:35		
1:40	Ulloa	Kierah	1:40	Fastert	Fenton
1:45	Thelander	Karley	1:45	Johnson	Brik
1:50	Griffin	Katelyn	1:50	Tillberg	Tyler
1:55	<b>Recycled</b>		1:55	Griffin	Kyson
2:00	Nichols	Stone	2:00	Fritz	Gauge
2:05	Escobedo-Baltazor	Maria	2:05		
2:10	Fritz	Bailey	2:10	<b>Senior Purchased</b>	
2:15	Ulloa	Kierah	2:15	Fouard	Carson
2:20			2:20	Roland	Wesley
2:25	<b>Junior Purchased</b>		2:25	Tillberg	Jacob
2:30	Mettlen	J.D.	2:30	Fritz	Lane
2:35	Ast	Ames	2:35		
2:40	Fastert	Tobias	2:40	Stone	Caroline
2:45	Johnson	Soren	2:45	Kinkelaar	Avery
2:50			2:50	Foth	Kinsley
2:55	Potter	Lyla	2:55	Ade	Zoe
3:00	Revell	August	3:00	Silverman	Stephanie
3:05	Gates	Maryn	3:05	Lofdahl	Hensli
3:10	Page	Parker	3:10	Foth	Cadence
3:15	Abdullayev	Vivienn	3:15	Gates	Jaelyn

**4-H members may enter in the Open Class Home Economics Exhibits in Kenwood Hall under Adult Classes Only. A 4-H member may NOT enter in Division 20 Youth 17 & Under Classes.**

**GRIEVANCE COMMITTEE FOR THE 4-H DIVISIONS AT THE FAIR**



We have a committee for 4-H to take grievances throughout the year. This same committee will take grievances from the county fair. Disputes should first be brought to the attention of the appropriate 4-H division superintendent and Extension staff. After receiving a decision from the department superintendent or staff member, any further dispute must be made in writing (within 2-3 hours of the decision by 4-H division superintendent or staff member), using the form available online <http://www.centrankansas.ksu.edu/4-h> under County Fairs, Tri-Rivers Fair. A hard copy can also be obtained from the 4-H division superintendent or Extension staff. To receive a ruling from the grievance committee, the dispute form must be accompanied by a \$50 fee (cash, personal check, or money order made payable to "4-H Council"). The grievance committee will review the complaint and will get back with the individual named on the complaint form as soon as possible via email. The fee will be refunded upon the ruling from the Grievance Committee. If no decision is reached due to lack of information, the fee will not be refunded. Any collected fees will be considered a tax-deductible donation to 4-H Council.

**Tri-Rivers Fair 4-H Complaint Form**

Date: \_\_\_\_\_ Name of Person Filing the Grievance \_\_\_\_\_

Name of 4-H Member(s) \_\_\_\_\_ Cell Phone Number \_\_\_\_\_

Address \_\_\_\_\_ Alt. Phone Number \_\_\_\_\_

\_\_\_\_\_ Email Address: \_\_\_\_\_

4-H Department: \_\_\_\_\_

Complaint (please be as detailed as possible):

---

---

---

---

---

---

---

---

---

---

---

---

---

---

---

---

---

---

---

---

---

---

---

---

If more space is needed, please use back of form.

\_\_\_\_\_  
Name of Complainant (print) Signature

By signing, the complainant believes the above information to be entirely true.



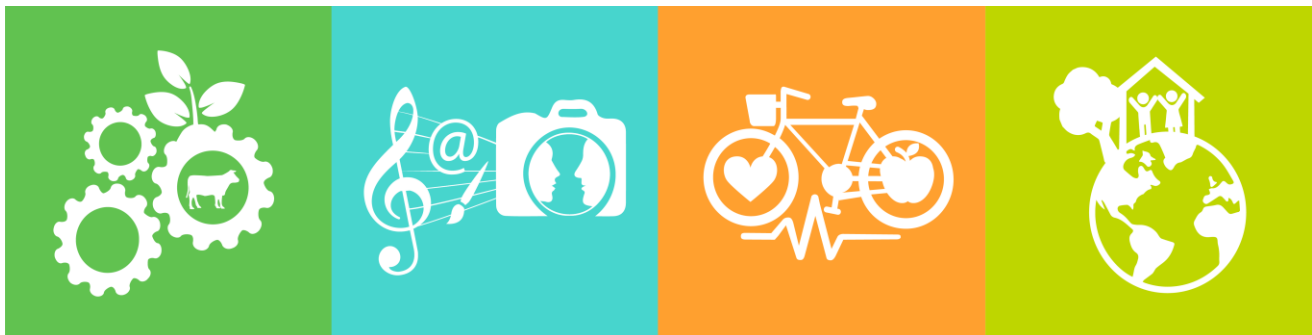


## KANSAS STATE FAIR INFORMATION

Qualifications to exhibit: 4-H member must be 9 before January 1, 2023, and their project must have received a purple at the county fair and a class must be available at the State Fair...check the State Fair web page for details (i.e., other projects do not qualify for State Fair). Animal projects excluded, with the exception of rabbits, dairy goats, dairy cattle, and dogs. Our agents will take your non-livestock 4-H exhibits to the Kansas State Fair for you.

- State Fair pre-entries are due on **August 14 by 12:00 p.m. Noon** in the Salina Extension Office.
- More details on how to prepare exhibits to be taken to the State Fair will be posted online in August at <http://www.centrankansas.ksu.edu/4-h> under Upcoming Events & Online Registration.
  - The 4-H exhibits that must be pre-entered by the 4-H family are:
    - **Demonstrations / Illustrated Talks / Project Talks / Drama: Reading - Poetry Interp or Prose Interp:** 4-H Club Day, blue and purple ribbon talent qualify for State Fair. Pick up a form on the stage at the fair or at the Salina Extension Office.
    - **Dairy Cattle / Dairy Goats / Rabbits / Poultry / Dogs:** Pick up a form from the project superintendent, on the stage at the fair or at the Salina Extension Office.
    - **Fashion Revue:** Forms and other information will be given to members who qualify on the night of the Public Fashion Revue.
  - The following exhibits are automatically entered in the State Fair: Foods, Foods Preservation, Clothing, Fiber Arts, Energy Management, Crops, Flowers, Forestry, Horticulture, Electric, Photography, Entomology, Geology, Home Environment, STEM (all divisions), Visual Arts, Wildlife, and Wood Science.
  - When coming into the Extension Office, please allow time to prepare your exhibit, as you are responsible for attaching all information to the entry.
- Livestock entries are due July 15 to the Kansas State Fair. Entries are available on-line at <https://www.kansasstatefair.com/p/competitions>. This includes Market Beef, Breeding Beef, Market Meat Goat, Breeding Meat Goat, Market Sheep, Breeding Sheep, Market Swine, and Breeding Swine.
- Information about volunteering at the Kansas State Fair will be emailed out through 4HOnline as soon as it is available. The deadline to sign up is usually the end of July.
- Horse Show entries are due ONLINE (<https://kansaseq.fairwire.com>) by August 1.

**Additional KSF Details will soon be posted under on the website at [www.centrankansas.ksu.edu/4-h](http://www.centrankansas.ksu.edu/4-h) under County Fairs.**



**2023 TRI-RIVERS 4-H JUDGING SCHEDULE**

Fair Theme: Sew It, Grow It, Show It

**4-H Building Hours for FAIR WEEK:**

Tuesday: Not open to the public, ONLY to those who are having items judged

Wednesday: 7:30 a.m. – 9:00 p.m.

Thursday, Friday, Saturday: 8:00 a.m. – 9:00 p.m.

**FRIDAY, AUGUST 4 – 4-H Building**8:00 a.m. Fair Cleanup, 4-H Building & Livestock Areas  
Dog Show Set-up, Tony's Event Center**SATURDAY, AUGUST 5, Tony's Event Center, Great Plains Manufacturing Convention Hall**

9:00 a.m. 4-H Dog Show (check-in at 8:30 a.m.)

**SUNDAY, AUGUST 6**1:00 p.m. 4-H Fashion Revue judging, Tony's Event Center, Great Plains Mfg. Convention Hall  
3:00 p.m. Performing Arts Judging, 4-H Building  
7:00 p.m. 4-H Public Fashion Revue, Tony's Event Center, Great Plains Mfg. Convention Hall**4-H BUILDING JUDGING SCHEDULE****Sign-up for Judging Times ONLINE on SUNDAY****SUNDAY, AUGUST 6**

12:00 a.m. Sign up for Judging Times Online OPENS

11:59 p.m. Sign up for Judging Times Online CLOSES

**MONDAY, AUGUST 7 - 4-H Building**

7:30 a.m. – 3 p.m. Exhibit Drop-off for all 4-H Building Exhibits (including clothing &amp; fashion revue garments)

**TUESDAY, AUGUST 8 - 4-H Building**9:00 a.m. 4-H Building Opens for judging (not open to public)  
9:15 a.m. 4-H Crops/4-H Entomology judging  
9:15 a.m. 4-H Horticulture judging  
10:00 a.m. 4-H Foods/Foods Pres. judging  
10 a.m.-2 p.m. 4-H Bake Sale (at Pop Stand)  
10:00 a.m. 4-H Wildlife/Forestry/Shooting Sports/Energy Mgmt. judging  
10:00 a.m. 4-H Geology judging  
1:00 p.m. 4-H Clothing Construction/Fiber Arts judging  
1:00 p.m. 4-H Cloverbud judging  
1:00 p.m. 4-H Photography judging  
7:00 p.m. **Parade Downtown Theme:**  
**"Sew It, Grow It, Show It"****WEDNESDAY, AUGUST 9 - 4-H Building**8:00 a.m. 4-H Bake Sale (carryover from Tues. if baked goods left)  
8:00 a.m. 4-H Other Projects judging  
8:30 a.m. 4-H Visual Arts judging  
10:00 a.m. 4-H Wood Science judging  
12:00 p.m. 4-H Banners judging  
12:00 p.m. 4-H STEM judging  
1:00 p.m. 4-H CO2 Car judging  
1:00 p.m. 4-H Home Environment judging  
1:30 p.m. 4-H Notebook judging  
7:00 p.m. **Crowning of 4-H Fair King/Queen, Tony's Event Center, Great Plains Manufacturing Convention Hall**  
7:30-8:30 p.m. Saline Co. 4-H Development Fund Donor Reception**THURSDAY, AUGUST 10 - 4-H Building**12:00 p.m. Saline County Farm Bureau Hamburger Feed (open to public) Ag Hall  
1:00 p.m. 4-H Cat and Hand Pet Shows (must be checked-in by 12:30 p.m.)**FRIDAY, AUGUST 11 - 4-H Building**2:00 – 4:00 p.m. Thank You Note Table (for 4-H Members to write thank you notes for fair sponsors)  
3:00 – 6:00 p.m. 4-H FCS & Photography Judging**SATURDAY, AUGUST 12 – 4-H Building**

9:00 a.m.-12:30 p.m. 4-H Fair Fun Day, 4-H Bldg.

7:00 p.m. 4-H Awards Assembly, 4-H Building  
8:00 p.m. 4-H Building Exhibits released or after Awards Program.**4-H LIVESTOCK JUDGING SCHEDULE****WEDNESDAY, AUGUST 9****4-H LIVESTOCK ENTRY:****Swine 8-8:30 a.m.; Sheep 8:45-9:15 a.m.; Meat Goats 9:15-9:45 a.m.; Beef 10-10:30 a.m.; Bucket Calves, Dairy Cattle, Dairy Goats, Horses and all Other Breeding Livestock 7:30 a.m.-Noon**7:30-9 a.m. 4-H/Open Poultry check-in, Barn #1  
9:00 a.m.-12:00 p.m. Rabbits must be checked-in  
10:00 a.m. 4-H/Open Poultry Judging, Barn #1  
2:30 p.m. 4-H Bucket Calf Show, 4-H Dairy Cattle Show, 4-H Dairy Goats, AG Hall**THURSDAY, AUGUST 10**9:00 a.m. 4-H Beef Show, AG Hall  
12:00 p.m. Saline County Farm Bureau Hamburger Feed (open to public) Ag Hall  
2:00 p.m. 4-H Meat Goat Show, Barn #2  
4:00 p.m. 4-H Sheep Show, Barn #2  
5:30 p.m. 4-H Swine Show, Barn #2  
7:30 p.m. or 45 minutes after the swine show  
**4-H INTENT TO SELL DUE IN FAIR OFFICE****FRIDAY, AUGUST 11**8:30 a.m. 4-H Horse Show, AG Hall  
9:00 a.m. 4-H Rabbit Show, Barn #2**SATURDAY, AUGUST 12**9:00 a.m. Livestock Sale  
2:00 p.m. 4-H Round Robin, Barn #2 & AG Hall  
4:00 p.m. Ag Olympics, AG Hall  
**All ANIMALS RELEASED AFTER AWARDS CEREMONY****Important Changes in Fair Schedule****All animals are released on Saturday, August 12 after Awards Ceremony**