

centralkansas.k-state.edu/4-H

Central Kansas District 4-H

February, 2021

Sarah E. Maass, Ph.D.

District Extension Agent
4-H Youth Development
semaass@k-state.edu

Kate Littich

District Program Assistant
4-H Youth Development
klittich@ksu.edu



K-STATE
Research and Extension

K-State Research and Extension is an equal
opportunity provider and employer.

Kansas4-H.org

LOCAL & STATE 4-H SCHOLARSHIPS

Don't forget, local & state 4-H scholarships are due March 1 ONLINE. For more information, please visit the District website at <https://www.centralkansas.k-state.edu/4-h/scholarships/index.html> If you have any questions about scholarships, let Kate or Sarah know.

SEWING MACHINES FOR CHECKOUT FOR 4-H MEMBERS ONLY

The District has three sewing machines for 4-H members to check out (one in Minneapolis and two in Salina). The machines can be checked out for 7 days, or 1 week. Checkout will require a \$100 refundable deposit, with checks made out to CKD Extension. If the 4-H member wants to check out the 1/4 inch foot, that will require an additional \$30 deposit. Individuals MUST allow for time to go through a check out sheet and check in sheet when checking out and returning the sewing machine. Note: The only sewing needles provided are the 80/12 needles. If the 4-H member needs a special needle based on the material he/she will be working with, he/she will need to supply their own.

RED WHEEL FUNDRAISER UPDATE

Minneapolis – The delivery date for Red Wheel is February 27. Due to the unique situation with necessary changes for safety protocols, leaders and families will be sent revised instructions for the pick up procedures no later than February 10.



4-H CLUB DAY INFORMATION

Results from the 2021 4-H Club Day (including run-off information) will be posted on the Central Kansas District website (<https://www.centralkansas.k-state.edu/4-h/4-hclubday/>) on February 8, 2021, as they become available.



The 4-H Club Day Committee is excited to report there are plans in process for a hands-on #InspireKidsToDo community service project. Further information will be sent out later in February via email and will also be published in the March newsletter.

The 4-H Club Day Committee would also like to extend special thanks to all of the 2021 participants for accepting the challenge to try 4-H Club Day in a virtual environment. Your willingness to try new things is greatly appreciated.



KAPs GOING TO STATE CONTEST

Congratulations to those individuals who have KAPs going to the state contest:

Beef: Josi Schrader, Solomon Valley
Weston Schrader, Solomon Valley
Communication: Adelaide Easter, Sunny Valley

Leadership: Adelaide Easter, Sunny Valley
Performing Arts: Emma Littich, Smoky View

4-H NEWSLETTER DEADLINES FOR 2020

If you have something you would like in the *4-H Newsletter*, be sure to email it to semaass@k-state.edu. The deadline for March is February 15; and for April is March 14.



OLD 4-H PHOTOGRAPHS GATHERING DUST?

The 4-H Photography Judging Committee needs photos still on the mount boards to use for judging contests. If you want to donate those old photos so they can help 4-H members judge photos. Bring them to the Extension Office so they can be used again. Please remove any ribbons and front photography label at the bottom of the photo mount. The photo can still be in the clear plastic bags. The committee thanks you for your donation to help us make our photography judging teams great.

4-H COUNCIL SCHOLARSHIPS

4-H Council scholarships are available for numerous 4-H sponsored events. If you are interested in receiving a scholarship, it is important that you not only complete the 4-H Council Scholarship Application (<http://www.centrankansas.k-state.edu/4-h/documents/Scholarship%20Application.doc>), but that it is submitted to either Extension Office at the same time you pay the registration fee. **Any applications received after the registration deadline will not be considered for a scholarship.**



SAVE THE DATE – 48 HOURS OF 4-H

48 Hours of 4-H will be held the weekend of October 9-10. Save the date now and join us this fall in seeing just how much we can give back to our communities! Invite your friends, clubs, adult volunteers, and 4-H alums too! If these dates create a conflict for your club, don't worry, plan a project for another weekend in October!

GAVEL GAMES & MODEL MEETINGS RESULTS

Congratulations to all the participants! The judges had positive comments and enjoyed your presentations! Remember, teams presenting on Friday were not eligible for Regional 4-H Club Day. RQ = Regional Qualifier



Model Meetings

Friendly Valley – Blue
Smoky View – Purple (RQ)
Willing Workers—Purple (RQ)
Woodsdale – Blue

Gavel Games Senior

Pleasant Valley – Purple (RQ)
Sunny Valley - Blue
Willing Workers – Purple (RQ)

Gavel Games: Junior

Cardinal Junior A – Purple (RQ)
Gypsum Valley Junior A (Friday) – Purple
Gypsum Valley Junior B (Friday) – Blue
Willing Workers Junior A – Red

Gavel Games: Extemporaneous

Extemp A – Red – Matthew Redden, August Hulse, Amaria Wangerin, Matthew Whelchel, Aiden Wangerin, & Caroline Stone

4-H CAMP

Right now, 4-H Camp is scheduled for June 24-27 (Rookie Camp Session 1: June 24-25 & Session 2: June 26-27) and counselors would go to Rock Springs on June 23. While we do not have a crystal ball to know how camp will look, we are currently planning for an in-person 4-H camp at Rock Springs. Watch your email for more details as they become available.



TRI-RIVERS FAIRBOARD FUNDRAISER

The Tri-Rivers Fairboard would like to invite you to join the Dillon's Community Rewards Program which donates a percentage of your total Dillons bill to the Saline County Fair Association (Fairboard) which we use to support 4-H. You may sign up at: <http://www.dillons.com/communityrewards>

KANSAS 4-H SHOOTING SPORTS AGE

The Kansas 4-H Shooting Sports program adheres to the National Shooting Sports Policies. The national policy regarding youth participation is stated as follows:

"4-H Shooting Sports Programs are open to all youth 8 years of age or older (as of Jan. 1 of the current year) without regard to race, color, sex, handicap, religion, age or national origin. Each state Land Grant University determines 4-H maximum age eligibility. Note that age eligibility for National 4-H Shooting Sports Events are determined by the National 4-H Shooting Sports Committee and may be different than that of states. 4-H Cloverbuds (age 5-6) and members age 7 are not eligible for any aspect of 4-H shooting sports programs as these are not age appropriate activities."



Inappropriate activities include attending shooting sports meetings and practices. 4HOnline does not allow youth under age 8 to enroll in 4-H Shooting Sports.

NATIONAL 4-H YOUTH SUMMIT SERIES

The 4-H National Youth Summit Series brings together high school students for three days of hands-on activities and workshops, led by leaders and educators in these fields. For 2021, these events will be held virtually.

- Register and attend in small groups or as an individual
- Work alongside students and experts with shared interests
- Learn and strengthen technical and leadership skills
- Earn accreditation to feature on college or job applications

2021 Agri-Science Summit

Online, March 4-7, 2021 - Registration Closes February 15

At the National 4-H Youth Summit on Agri-Science, high school students develop the skills and knowledge needed for the challenges facing agriculture, food security, and sustainability. Students will work with each other and experts in the agricultural community in this collaborative, hands-on educational setting.

For more information visit [National Youth Council Summit Series](http://NationalYouthCouncilSummitSeries.org) or go to <http://4-h.org>



SAVE THE DATE: 4-H DISCOVERY DAYS

4-H Discovery Days will be held June 1-4, virtually. Watch for more information in future newsletters.

LIVESTOCK INFORMATION

ATTENTION LIVESTOCK EXHIBITORS – 2021 YQCA CERTIFICATION

Youth for the Quality Care of Animals (YQCA) is a national, multi-species youth livestock quality assurance program that focuses on food safety, animal well-being, and character development, through age-appropriate educational curriculum for youth 8-21 years of age. This program is an annual certification that grows with a young person, so the learning modules are different every year.

ALL livestock exhibitors (beef, swine, sheep, meat goat) are once again required to be YQCA-certified in order to participate in the 2021 Ottawa County Fair, Tri-Rivers Fair, Kansas State Fair Grand Drive, and/or Kansas Junior Livestock Show (KJLS). This includes youth who will be showing market animals, commercial breeding females, and/or registered purebred breeding females. Since the program is designed to be a national standard for youth ages 8 and older, 7-year-olds who will be participating are again exempt from completing this requirement. However, they are encouraged to attend an instructor-led class (with at least one parent) for the educational value.

Due to COVID restrictions, dates have yet to be set, but we are looking at March/April dates. Livestock 4-H members should watch their email for details from Carol Craver. For more details about the YQCA program, please contact Justine Henderson (jwh04@ksu.edu or 785-309-5850).

BEEF CHECK-IN FOR DISTRICT BEEF PROJECT MEMBERS

Beef Check-in will be **Saturday, March 13**, in two locations. From 8:00 -11 a.m. we will be at Glenn Engelland's Farm and from 1-3 p.m. at Spencer Schrader's Farm. Regardless of where you plan to go, please go to <http://www.centrankansas.ksu.edu/4-h> and click on the Beef Check-in sign up for a spot before **Thursday, March 11**. Sign-up will be ONLINE ONLY. Both check-in locations are open to all District 4-H Members. At both sites we will be weighing, tagging market animals and tagging Commercial Heifers. Commercial heifers that will not be nominated to attend state shows can be tagged at home (will need to purchase tags from the Extension Office) and photo taken showing the heifer with the tag in the ear by May 1. Registered heifers do not have to be checked in or nominated. All animals will have an official "Kansas 4-H" ear tag put in the ear at a cost of \$3.50/tag. To show at the Kansas State Fair and/or Kansas Junior Livestock Show you must nominate them. If you need a DNA envelope to nominate your animal(s), the cost will be \$0.50 each. Due to COVID-19 restrictions, all members and family will be required to wear a mask if they exit the vehicle and social distancing will be enforced.

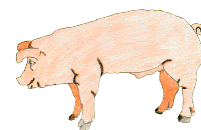
CHECK-IN FOR: MARKET MEAT GOAT & MARKET LAMB



The Districtwide tagging & check-in will be held April 28, in Salina (fairgrounds) and April 29, in Minneapolis (fairgrounds) from 4 to 6 p.m. for meat goats and lambs. Tags will cost \$3/tag. If interested in exhibiting livestock at the State Fair or Junior Livestock Show, a nomination will be required. In 2020, the cost was \$8/animal. Right now, we are unaware of the cost for 2021. Due to COVID-19 restrictions, masks are required and social distancing will be enforced during the check-in.

ATTENTION: SWINE EXHIBITORS

4-H members will check-in their own swine projects through a required process via email. Information on this process will be sent out to ONLY the families who have children enrolled in the swine project. If you are not already enrolled in the swine project and plan to show swine, be sure to get enrolled in 4HOnline.



SWINE AND MEAT GOAT PRODUCER DAYS GO VIRTUAL

The Kansas Junior Producer Days will be hosted in February and March, 2021, as a virtual series over the course of a week. The Junior Swine Producer Week will be February 15-20 (registration deadline February 8). Presentations will be provided a couple of days during the week, with the final sessions and discussions being on Saturday morning. All of the sessions will be recorded and shared with those who register. Junior Meat Goat Producer Week will follow a similar format March 15-20 (registration due March 8).

All youth, parents, leaders and Extension Agents are invited to participate in these educational experiences. K-State faculty members, graduate students, veterinarians, Extension Agents, guest speakers, and specialists will speak about various topics related to project management specific to each species. Tentative topics include selection, nutrition, meat science, health, and showmanship. More details and registration information will be released in the coming weeks. Please watch the youth livestock program website (<https://www.asi.k-state.edu/research-and-extension/youth-programs/>) and Facebook page for updated information and a link to register.

LEADERSHIP OPPORTUNITIES

4-H COUNCIL NEWS

March Meeting

The March 4-H Council Meeting will be held on Monday, March 22, virtually. Council members should watch their email for the agenda packet closer to the meeting date.

2021 CENTRAL KANSAS DISTRICT 4-H AMBASSADORS

Congratulations to the new Central Kansas District 4-H Ambassadors:

Olivia Boucek, Woodsdale
Hensli Lofdahl, Smoky View

Kayla Norberg, Smoky View
Reygan Schrock, Cardinal

Continuing Ambassadors are:

Brynna Anderson, Smoky View
Christian Cox, Sunny Valley
Jocelynn Cox, Sunny Valley
Carson Fouard, Cardinal
Lane Fritz, Gypsum Valley

Dylan Koehn, Pleasant Valley
Emma Littich, Smoky View
Soren Mannebach, Willing Workers
Matthew Redden, Willing Workers



VOLUNTEER SCREENING ORIENTATION

We will have one more volunteer screening orientation this year. It will be held on Sunday, March 7, from 2-4 p.m. with the Online "RSVP" due Monday, March 1. The link to RSVP for the orientation can be found at <http://www.centralkansas.ksu.edu/4-h>, under Upcoming Events and Online Registration. If you do not have access to the web, please contact either Extension Office. If there are not enough individuals interested in the orientation, it will be cancelled and those that sign up by the deadline will be notified. ***This orientation is the one any potential 4-H Camp Counselor should plan to attend if they have not already previously attended an orientation. This orientation will be held virtually instead of in-person as originally noted.***

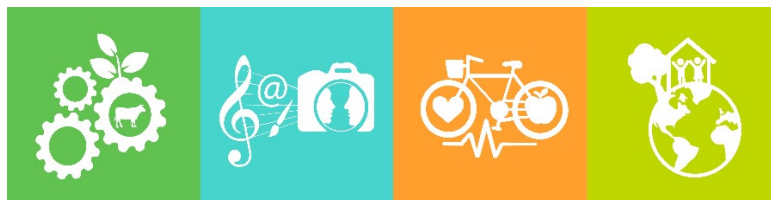


COUNTY FAIR INFORMATION

It is hard to imagine that the county fairs will be here before we know it. The planning has begun. Watch for more details in the future 4-H newsletters.

FAIR SUPERINTENDENTS AND ASSISTANT SUPERINTENDENTS

The dates for the Ottawa County Fair are July 20-23. The Tri-Rivers Fair will be on August 4-8 (pre-fair judging on August 3). Both fairs need superintendents and assistants. We need a lot of parents and youth to help ensure a smooth-sailing event. Do not forget that these leadership and citizenship opportunities can be counted in the 4-H member's record book. Interested 4-H members, parents and volunteers...should sign up online by April 1 by going to <http://www.centrankansas.ksu.edu/4-h>, and you will find a link under "Upcoming Events and Online Registration" for County Fair Superintendent and Superintendent Sign-up. Thanks to those who have already volunteered.



QUIZ BOWL: THE RESULTS ARE IN!!!

Congratulations to the four clubs who competed in the Central Kansas District 4-H Quiz Bowl on Saturday, January 30! The teams were formed by four clubs: Solomon Valley, Smoky View, Willing Workers, and Woodsdale.

The quiz bowl offered a great opportunity for 4-H members to demonstrate their knowledge and skills relating to all aspects of 4-H. The 4-H members worked together to answer questions and had fun.



Prizes were given to the top two Jr. and three Sr. teams. They were:

Jr. 1st – Solomon Valley, Purple Team: Kinsley Crosson, Colton Crosson, Kaylynn Noon

Jr. 2nd – Woodsdale, Sharp Shooters: Brayden Johnson, Ady Johnson, & Coy Malmberg

Sr. 1st – Solomon Valley, Blue Team: Robert McKain & Conner Peck

Sr. 2nd – Solomon Valley, Green Team: Weston Schrader, Hayden Lott, & Liam Nichols

Sr. 3rd – Smoky View, Crew Team: Kayla Norberg, Acacia Pracht, Hensli Lofdahl

A \$25 prize was given to Solomon Valley, the club with the most points. We appreciate all the helpers who assisted with this event.

VIRTUAL DISTRICTWIDE LEADERSHIP WORKSHOP

Come learn some fun activities you can use at virtual meetings for ice-breakers, teambuilding, and discussion. The workshop will be held virtually on Tuesday, March 23, from 7-8:15 p.m. Please register by going to <http://www.centrankansas.ksu.edu/4-H/> and click on the link under "Upcoming Events & Online Registration." **Please register by Thursday, March 18.** Remember...This workshop will count for the leadership workshop on the pin applications. **Who can attend?** 4-H Members, Parents and Volunteers can attend! Participants will learn activities that they can take back to their clubs and other groups they work with or are a part of. Key lessons that will be emphasized are: teamwork, cooperation, leadership, problem solving, communication and decision making.

BRING YOUR 4-H PROJECTS TO LIFE

A monthly series connecting your 4-H projects, college, and careers.



4-H Project

Each month we will focus on a different 4-H project for 1-hour in a virtual setting. You may find a new passion!



Grow in Your Project Work

Explore ways you can enhance your learning activities within your favorite projects.



Connecting to College & Career Readiness

College professors, professionals in the field, and others will share their experience(s) and help participants grow.

K-STATE
Research and Extension



Central Kansas
District

K-State Research and Extension is committed to providing equal opportunity for participation in all programs, services and activities. Accommodations for persons with disabilities may be requested by contacting the event contact Lindsey (620-241-1523 / lmueting@ksu.edu) or Sarah (785-309-5850 / semaass@ksu.edu) two weeks prior to the start of the event. Requests received after this date will be honored when it is feasible to do so.
Kansas State University Agricultural Experiment Station and Cooperative Extension Service.
K-State Research and Extension is an equal opportunity provider and employer.

K-STATE
Research and Extension



McPherson
County

Bring your 4-H projects to life is focused toward 10-14 year olds, however other youth are welcome to attend.

February 11, 2021, 7:00 p.m.

Featuring Dr. Jeremy Marshall, K-State Department of Entomology

You are invited to attend a 1-hour Zoom led by Dr. Jeremy Marshall, Associate Professor & Director of Undergraduate Research and Creative Inquiry at K-State, as we focus on our 4-H Entomology project. We will explore how insects influence our daily lives, how they can help us solve some of the biggest problems facing Humanity, and opportunities to explore these areas more at Kansas State University. Register online at https://kstate.qualtrics.com/jfe/form/SV_4SnX9Lcr2fUoR13. Please be sure to register by February 9 to receive all program information.

Save the Date:

March 11, 7 p.m. – Foods & Nutrition – Pet Food

April 8, 7 p.m. – Veterinary Medicine



DISTRICTWIDE PROJECT NEWS

DISTRICTWIDE PROJECT LEADERS

Below are listed District Project Leaders which hold meetings throughout the year to help you with your projects. Check the newsletter for meeting dates and times or you may contact these leaders to find out the next meeting date, time and location. All phone numbers use the 785 area code unless otherwise indicated.

Project	Name	Phone #	Email
Beef	Spencer, Laci, Weston, & Josi Schrader	488-2135	schrader@twinvalley.net
Dog Care & Training	Sarah, Madison, & Tracy Repp	227-5647 (cell)	k9capersckd4h@gmail.com
Dog Care & Training	Rebekah, Eric, Morgan, & Diana Thompson	452-2234 (cell)	k9capersckd4h@gmail.com
Horse	Jennifer Watkins	452-5710 (cell)	watkins9468@yahoo.com
Horse	Bev Seuser	823-8923 (home) / 643-0754 (cell)	classy3560@gmail.com
Photography	Tod Megredy	620-366-3160 (cell)	tmegredy@gmail.com
Poultry	Hannah & Katrina Fahrenthold	822-7810	hannahfarenthold@gmail.com
Poultry	Hannah & Katrina Fahrenthold	822-7810	lfahrenthold@yahoo.com
Poultry	Klaira Thelander	823-7584	ktsrabbitranch@gmail.com
Rabbit	Jessica & Katrina Fahrenthold	826-5980	lfahrenthold@yahoo.com
Rabbit	Klaira Thelander	823-7584	ktsrabbitranch@gmail.com
Reading	Amber Pracht	212-5000	prachtamber@gmail.com
Shooting Sports: Archery	Cole Malmberg	392-7712	c-dmalmberg@hotmail.com
Shooting Sports: Archery	Cade Rensink	392-0022	crensink@ksu.edu
Shooting Sports: BB Gun	Jay Wisbey	587-7987 (cell)	jwisbey@ksu.edu
Shooting Sports: Rifle	Cole Malmberg	392-7712	c-dmalmberg@hotmail.com
Shooting Sports: Shotgun	Eric Klein	392-0368	herbie57_57@hotmail.com
Shooting Sports: Shotgun	Jay Wisbey	587-7987 (cell)	jwisbey@ksu.edu
Shooting Sports: Hunting Skills	Eric Klein	392-0368	herbie57_57@hotmail.com





DISTRICT 4-H HORSE NEWS

Horse IDs

A link to the Horse ID Form can be found at <http://www.centrankansas.ksu.edu/4-h> under 4-H Member Forms and Documents, "Horse ID." Be sure and check the back page, lower right-hand corner for the **January, 2020** date to ensure you have the correct form.

Items to note:

- The form **MUST BE** front and back of one page, not 2 pages.
- A standard size picture **MUST BE** attached. The picture should include all 4 legs and feet showing a profile of the horse with the head turned toward the camera. **ALL** markings must be clearly visible.
- Members, Parent/Guardian, Owners (if horse is leased) and County Agents **MUST** sign and date.
- The **ORIGINAL** 4-H Horse Identification Certificate **MUST** accompany the 4-H'er. The county office and project leader may have a photocopy.
- This form can be signed anytime between now and May 1, 2021.

If you have any questions, please don't hesitate to contact the Extension Office.

Horse Level Testing

Anyone wanting to take levels tests before District Horse Show Entries are due (June 1, 2021), should be studying for them now and then contact Bev so that a time may be set up to take the test. You can email Bev at classy3560@gmail.com

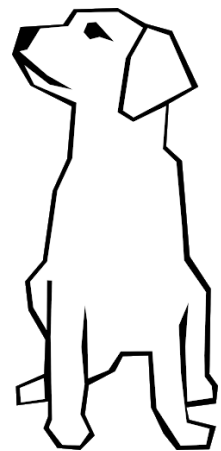
CANINE CAPERS NEWS

We would like to offer help for first year members to participate without a dog if, they want to start there or if they want to see what the project is about before getting a dog. We have activities available to help the learning process.

For members with a dog, we start the year with basic obedience training to get the foundation set. If you are coming with an already trained family dog, strengthening the bond and language between the 4-H member and the dog is key to a successful project experience. Training is foundational to the 4-H member/dog team bond and the obedience basics. Practice is coaching the 4-H members on advancing in the other areas of Showmanship, Rally- Obedience, and Agility.

Dog Care and Training participants, please contact k9capersckd4h@gmail.com with your questions. There is a maximum of 15 people that can be in the building at a time. Therefore, **RSVPs ARE REQUIRED** for scheduling purposes. Meeting details are below.

<u>Date</u>	<u>Time</u>	<u>Location</u>
February 2	6-8:30 p.m.	Kenwood Hall
February 9	6-8:30 p.m.	Kenwood Hall
February 16	6-8:30 p.m.	Kenwood Hall
February 23	6-8:30 p.m.	Kenwood Hall
March 27	9 a.m. – 12 p.m.	Ag Hall
April 6	6-8:30 p.m.	Kenwood Hall
April 13	6-8:30 p.m.	Ag Hall
April 17	9 a.m. – 12 p.m.	Kenwood Hall
April 20	6-8:30 p.m.	Ag Hall
April 27	6-8:30 p.m.	Ag Hall





EXTRA

NEWS FOR CENTRAL KANSAS DISTRICT ORGANIZATIONAL LEADERS

FEBRUARY CHECK-UP

Five months into the 2020-21 4-H year...where has the time gone? Are you ready for the monthly check-up?

Review

- _____ **4-H Club Day Run-Offs explained to the 4-H members.** Run-Offs conducted Saturday, February 13.
- _____ **4-H Newsletter** read and important dates marked on calendar.
- _____ Review highlights from the **4-H Newsletter** at club meeting.

To-Do

- _____ Volunteer Service Application and Renewal Form completed on all project leaders in 4HOnline.
- _____ Project Leaders conducting project meetings.
- _____ 4-H Club members inviting friends to join 4-H. Parents encouraging other parents to explore 4-H.
- _____ Check club mailbox at the Extension Office.
- _____ Report from the January 4-H council meeting.
- _____ Encourage 4-H members to update their Achievement Pins and Permanent Records.
- _____ Check club's progress toward goals.
- _____ Visitors reported to Kate (klittich@ksu.edu)

Promote/Recruit

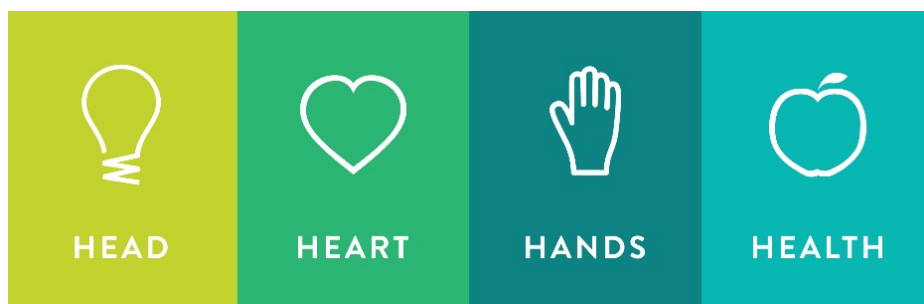
- _____ 4-H Camp Counselors recruited
- _____ 4-H Camp promoted, June 24-27; Rookie Camp promoted, two sessions, Rock Springs.
- _____ 4-H Discovery Days promoted, June 1-4.

ORGANIZATIONAL LEADER UPDATE

The next Organizational Leader Update will be held at 7 p.m., Tuesday, March 30, via zoom. More details will be in the next 4-H Newsletter.


YOUTH AS RESOURCES

Ever needed an extra hand putting together a 4-H meeting? Ever said, "If only, someone could do this job without supervision?" Have you spent endless hours searching for the "right" adult volunteer? Maybe the best adult volunteer was a TEEN. That's right! Or even a younger 4-H member. Why? Because teens and younger kids are not distracted by other priorities and they like to be needed. Also, they are usually technology gurus during this time of virtual programming. The next time you're looking for the perfect volunteer that needs no supervision...look for a 4-H member! You'll be pleasantly surprised.





February, 2021

Sunday	Monday	Tuesday	Wednesday	Thursday	Friday	Saturday
	1 CIA registration due online	2	3	4 Red Wheel Sales due by 5:00 p.m. Minneapolis	5	6
7	8	9	10	11 Virtual Exchange meeting with Wisconsin, 6 p.m. Bring 4-H Projects to Life, Entomology, 7 p.m.	12	13
14  CIA, Virtual →	15 Minneapolis Office Closed March Newsletter articles due to Sarah	16	17	18	19	20 4-H Club Day Run-Offs
21	22	23	24	25 Virtual Exchange meeting with Wisconsin, 6 p.m.	26	27 Red Wheel Delivery, Minneapolis
28	Upcoming Events: March 1 – Local scholarships due online 7 – Volunteer screening 11 – Bring 4-H Project to Life, Foods & Nutrition, Pet Food 13 – Beef weigh-in 22 – 4-H Council, Virtual 22 - 4-H Council, Virtual 23 – Districtwide Leadership Workshop, Virtual 25 – Virtual Exchange with Wisconsin					



Central Kansas Extension District

Salina Office

K-State Polytechnic
2218 Scanlan Ave
Salina, KS 67401-8196

Address Service Requested

THE 4-H YEAR IN FULL SWING

Dear 4-H Families,

January is over and we are now into February. Gavel Games, Model Meetings, Quiz Bowl, and Districtwide Committee Training was all held virtually. Our 4-H Club Day is a virtual contest with the exception of run-offs and spontaneous speaking. We still have lots of changes to what we are used to experiencing. Yet, we are still living by the 4-H Motto "To Make The Best Better."

Through these times, it is imperative you keep up on your email messages and read the newsletter. Review rules and schedules of contests. Do not hesitate to ask questions. Ask your club leaders, call the Extension Office, talk to other 4-H families.

Let's continue to remember why we do this thing called 4-H. We are still having a positive impact on the lives of youth! Let's not lose site of this.

Have a great month!

Sarah

Minneapolis Office • 307 N Concord • Suite 190 • Minneapolis, KS 67467-2140 • 785-392-2147 • Fax 785-392-3605

Salina Office • K-State Polytechnic • 2218 Scanlan Ave • Salina, KS 67401-8196 • 785-309-5850 • Fax 785-309-5851