

centralkansas.k-state.edu/4-h

Central Kansas District 4-H

February, 2026

4-H Council News

March Meeting

The March 4-H Council Meeting will be held Monday, March 23 at 7:00 p.m., in Minneapolis. We will meet in the new Extension Office at 315 W. 3rd Street, across the street south from the Ottawa County Courthouse. Council members should watch their email for the agenda packet closer to the meeting date.

4-H Newsletter

Deadlines for 2026

If you have something you would like in the *4-H Newsletter*, be sure to email it to ev13104@ksu.edu. Deadlines are:

- March - February 10
- April - March 10
- May - April 10
- June - May 10
- July/August - July 10



K-STATE
Research and Extension

K-State Research and Extension is an equal opportunity provider and employer.

Kansas4-H.org

Minneapolis Extension Office Has Moved!

The Minneapolis Extension Office has moved! The new office is located across the street south from the Ottawa County Courthouse. The new address is 315 W. 3rd Street. Please see Page 4 for Open House information.

Project Awards Going to State Contest

Congratulations to a 4-H member who has their Project Award Application going to the state contest:

Sheep: Gauge Fritz, Gypsum Valley



2026 4-H Ambassadors

Congratulations to the new Central Kansas District 4-H Ambassadors:

Katelyn Griffin, Smoky View

Maria Escobedo-Baltazor, Willing Workers

Continuing Ambassadors are:

Zoe Ade, Boldly Go

Eian Pracht, Smoky View

Kyson Griffin, Willing Workers

Caleb Schlatter, Boldly Go

Acacia Pracht, Smoky View

4-H Council Scholarships

4-H Council scholarships continue to be available for numerous 4-H sponsored events, including virtual events. If you are interested in receiving a scholarship, it is important that you not only complete the 4-H Council Scholarship Application on the website <http://www.centralkansas.k-state.edu/4-h/> under 4-H Member Forms & Documents, but that it is submitted to either Extension Office before 5:00 p.m. on the day of the registration deadline. Any applications received after 5:00 p.m. on the registration deadline will not be considered for a scholarship.

All applications need to be the original application. No emailed applications please.

Gavel Games & Model Meetings Results

Congratulations to all the participants! The judges had positive comments and enjoyed your presentations! Remember, teams presenting on Friday were not eligible for Regional 4-H Club Day. RQ = Regional Qualifier

Gavel Games: Junior

Boldly Go Junior A - Purple (RQ) – Ava, Cole, Finley, Sawyer
Boldly Go Junior B - Blue - Anna, Emily, Charlotte, Maverick, Member
Smoky View Junior A - (Friday) - Purple - Dean, Eddie, Everett, J.D.
Smoky View Junior B - Blue - Bristol, Haylie, Kenzie, Maia
Cardinal Junior A - Purple (RQ) – Clara, Elias, Oscar, Parker, Reid
Pleasant Valley Junior A - Red - Charlotte, Madyson, Noah, Quinnley
Woodsdale Junior A - Blue - Kyson, Lucy, Makayla, Riley, Vivian



Gavel Games Senior

Boldly Go Senior A - Purple (RQ) – Bradley, Luke, Paxton, Zoe
Boldly Go Senior B - Purple (RQ) – Caleb, Ellie, Matthias, Robert
Woodsdale Senior A - Red - Adalynn, Chance, Coy, Kathleen, Lydia,

Gavel Games Extemporaneous

Purple - Bradley, Luke, Paxton, Zoe

Information On Fundraisers

Attention 4-H Families, Districtwide Project Leaders, & Organizational Leaders



Central Kansas District Fundraising Policy

The Central Kansas Extension Board adopted a policy to go alongside the Kansas 4-H Policy regarding fundraising at the February, 2014, Board Meeting. The policy is:

“4-H members MAY NOT solicit funds to help fund their individual 4-H projects. 4-H members may fundraise for a specific 4-H EDUCATIONAL trip. Donations given directly to a 4-H member ARE NOT tax deductible because they do not go to a 4-H club or group. Any fundraising programs by clubs or individuals MUST be approved by the 4-H Youth Development Agent; the funds must be used to further the 4-H mission; the account procedures must be appropriate and in accordance with the POLICY; and the 4-H name and emblem must be properly used.”

Any fundraising done in the name of 4-H needs to be approved by our office. Contact Ellie.

Annual Ottawa County 4-H Foundation Fund Drive

The annual Ottawa County 4-H Foundation Fund Drive will be held March 1 - 31 this year.

Tri-Rivers Fairboard Fundraiser

The Tri-Rivers Fairboard would like to invite you to join the Dillon’s Community Rewards Program which donates a percentage of your total Dillons bill to the Saline County Fair Association (Fairboard) which we use to support 4-H. You may sign up at: <http://www.dillons.com/i/community/community-rewards>

4-H Scholarships

Attention High School Seniors!! Are you in search of some funds to further your college education? 4-H scholarships you may be eligible for are below.:

Local 4-H Scholarship Information

CKD Local 4-H Scholarship information is posted on the CKD 4-H Scholarship Information page at <https://www.centrankansas.k-state.edu/4-h/scholarships/>.

All scholarships are due ONLINE no later than March 1, 2026, 11:59 p.m.

If you need a letter of recommendation from Ellie at ev13104@ksu.edu and/or Kate at klittich@ksu.edu please send an email requesting a letter. Be sure to include your most current resume and 4-H permanent record with your email. If possible, we ask for 3-4 weeks to complete the letter of recommendation prior to the due date.

YQCA 2026 Scholarship Program

YQCA is excited to announce the 2026 Scholarship Program. To be considered for this scholarship, applicants must be in the age range of a high school senior to 21 years of age. Applicants must have experience with an animal project in one of the species covered by YQCA (beef cattle, dairy cattle, swine, sheep, goats, poultry, or rabbits). All applicants must show a commitment to pursuing a career path in agriculture, livestock, or food systems. Applicants must meet one of the following education and career pathway requirements:

- **High School Seniors:** High school seniors may apply if they have been accepted into an accredited college, university, or certification program in an agriculture-related field.
- **High School Graduates:** High school graduates must be currently enrolled in one of the following:
 - A 2- to 4-year college or university agriculture program
 - An agriculture-related certification program

The application will close **February 15, 2026, at 11:59 p.m.**

For more information and to apply, go to <https://yqcaprogram.org/local/2026-scholarship-program.php>

Sunflower Livestock Showdown Scholarship Program

The Finney County Youth Livestock Committee, along with our generous sponsors, are pleased to be able to provide graduating high school seniors or college freshmen (still eligible to show livestock through 4-H) the opportunity to apply for a Sunflower Livestock Showdown \$500 scholarship. Eligible students who plan to further their education full-time in an agriculture related field are encouraged to apply for a Sunflower Livestock Showdown \$500 scholarship. Areas of study include agricultural education, communications, production, research, engineering, or other areas involved with the agriculture industry. The scholarship program hopes to identify talented students who may emerge as leaders in the agriculture industry. Up to five eligible students will be selected to receive awards during the 2026 Sunflower Livestock Showdown livestock show. **All applications with materials listed must be submitted by April 1, 2026.** Contact Ellie at ev13104@ksu.edu for more information.

You're invited!

OPEN HOUSE

K-STATE
Research and Extension

Central Kansas District



Come and see our new office!

February 3rd, 3-6pm

315 W 3rd St. Minneapolis, KS

4-H Key Award

Fact Sheet

Overview

The Kansas Key Award is one of the highest honors awarded to 4-H members across Kansas. As a 4-H award, the applicant needs to highlight 4-H related events, activities and achievements accomplished within the 4-H club, county/district, region or state.

When to start?

4-H members are encouraged to review the Key award as early as 12 years old to ensure long-term requirements can be met.

K-STATE
Research and Extension



Main Requirements

Applicant must have:

- Completed 4 or more years of 4-H work
- Enrolled in 4-H Leadership for 4 years or more
- Passed their 16th birthday before January 1 of the current 4-H year

High School Graduation Requirements

- Starting with the class of 2028, students will have new graduation requirements.
- These requirements include at least two post-secondary assets.
- The Kansas 4-H Key Award is listed as an option for post-secondary assets.

The application for the 4-H Key Award can be found at:

<https://www.centrankansas.k-state.edu/4-h/>
under the "Awards and Recognition" tab.

For further questions, please contact either of our Extension Offices.

Project News

Attention Livestock Exhibitors – 2026 YQCA Certification

Youth for the Quality Care of Animals (YQCA) is a national, multi-species youth livestock quality assurance program that focuses on food safety, animal well-being, and character development, through an age-appropriate educational curriculum for youth 8-21 years of age. This program is an annual certification that grows with a young person, so the learning modules are different every year.

- All members enrolled in breeding and market beef, meat goats, sheep, and/or swine **MUST** complete the certification by May 1, to exhibit at the Ottawa County Fair and Tri-Rivers Fair.
- Members enrolled in bucket calf, dairy cattle, dairy goats, dog, horse, pets, poultry, and rabbits **DO NOT** need to complete the certification.

7-Year-Old Members

- If you **do not plan to show at KJLS, YQCA is not required**, but youth are welcome to attend for the learning experience (no registration needed).
- If you **plan to show at KJLS, you must be YQCA certified** by attending an instructor-led course.

2026 YQCA Class Information

There are two options for the 2026 in-person class.

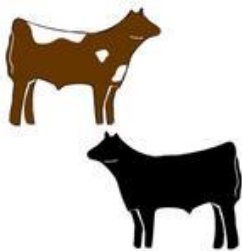
- April 6 - 6:00 p.m. - Minneapolis Extension Office, 315 W. 3rd Street (across the street south from the courthouse)
- April 16 - 6:00 p.m. - Salina, College Center Conference Room on the K-State Campus

Parents do not need to attend. They may drop off and pick up children accordingly. Also, know that if you do not wish to attend in-person training, the online course is available. **If you choose this option, please email a copy of your certificate to Justine at jwh04@ksu.edu by May 1.**

Follow the link <https://yqcaprogram.org> to log into your account or create an account, and sign up for a class. You are highly encouraged to click on “Help Desk” for Frequently Asked Questions and to view Help Videos about creating an account, registering for courses and printing certificates.

Members need to complete the **PRE-TEST** before coming to the course and the **POST TEST** after attending the course. They will not be able to receive their certificate until both are completed. For more details about the YQCA program, contact Justine Johns at jwh04@ksu.edu or 785-392-2147.

Central Kansas Beef Classic Show



This “Blow and Go” show will be held on Saturday, April 18. The show is open to any bonafide 4-H and FFA member who has not yet reached their 19th birthday before January 1, 2026. There will be a special class for the 4-H members enrolled in a club in the Central Kansas District. The entry fee is \$25 per head, but after April 10 the fee will increase to \$30 per head. All fees must accompany registration. For registration information, please go to the District website at <http://www.centrankansas.ksu.edu>, click on “4-H Youth and Development” on the left-hand side, and a flyer will be located under Upcoming Events & Online Registration.

Beef Weigh-In & Tagging for District Beef Project Members

Beef Weigh-in will be Saturday, March 14, in two locations.

- 8:00 a.m. - 11:30 a.m. - Glenn Engelland's Farm, 4399 W. Watkins Rd., Salina.
From the I-70 exit, go north 1 1/2 miles on Halstead Rd. Turn left (west) on to Watkins Rd. for 1 1/2 miles. The farm is located on the south side of the road.
- 1:00 p.m. - 3:00 p.m. - Schrader Ranch, 2118 Oxbow Rd., Wells.
From Wells, go north to Mulberry Rd., then east 2/3 mile to 210 Rd. Go north 2 miles, and then turn east on Oxbow Road. The farm is located on the south side of the road.

Regardless of where you plan to go, please go to <http://www.centrankansas.ksu.edu/4-h> and click on Beef Weigh-in under Upcoming Events & Online Registration to sign up for a spot before Thursday, March 12. Sign-up will be ONLINE ONLY. Both locations are open to all District 4-H Members. All animals will have an official "Kansas 4-H" ear tag put in the ear at a cost of \$3.50/tag.

➔ We will be weighing, tagging **all market animals, and tagging all commercial heifers**. **Photo submissions are no longer accepted as a way to tag commercial heifers.**

Registered heifers and bucket calves **DO NOT** need to come to weigh-in and tagging.

Small Animal Weigh-In & Tagging - Market & Breeding Meat Goat, Sheep & Swine

The Districtwide small animal tagging and weigh-in will be held from 4:00 p.m. – 6:00 p.m. for meat goats, sheep, and swine on:



- Wednesday, April 23, in Salina (fairgrounds)
- Thursday, April 24, in Minneapolis (fairgrounds)

Tags will cost \$3.00/tag.

➔ Swine are now required to be at the small animal weigh-in and tagging. **Photo submissions are no longer accepted as a way to tag swine.** You will need to bring all market and breeding swine projects to tagging. They will not be weighed and will be left on trailers for tagging. Members or an associated adult will be required to tag all swine. All market and breeding sheep, meat goats and swine need to come to weigh-in.

K-State Junior Producer Days

The 2026 K-State Junior Producer Days have been scheduled. The two junior producer days being hosted in the spring are a junior beef and a sheep producer day at Bilbrey Family Events Center, Manhattan. These are one-day, educational events for families to learn about the selection and management of youth livestock projects.

- K-State Junior Beef Producer Day - Saturday, March 7, 2026 – Registration deadline February 13
- K-State Junior Sheep Producer Day - Saturday, April 11, 2026 – Registration deadline March 20

The cost to attend is \$20 per person by the deadline or \$30 after the deadline.

There will be an optional tour of the KSU Sheep and Meat Goat Center on the Friday night prior to junior sheep producer day, as well as after the program concludes on Saturday.

All attendees, including youth and adults, must register. Only those who register by the appropriate deadline will receive a t-shirt. A new registration system will be used this year for the junior day events. Registration is open at <https://www.asi.k-state.edu/extension/youth-programs/events/ks-jr-producer/>

Willie and the Beanstalk

Willie and the Beanstalk is a contest open to high school, middle school, elementary school, 4-H, and/or FFA teams interested in the scientific principles surrounding plant growth. The challenge is to grow the largest soybean plant in a 46-day time span and document this effort.

Beginning on a common seeding day, Monday, March 2, 2026, contestants will grow a soybean plant for 40 days, and document their activities. Entries can be scored by their adviser, or plants can be submitted to the Department of Agronomy in Throckmorton Hall during Kansas State University Open House for scoring. Prizes will be awarded for the top entries in each judging category, and all entrants win a t-shirt.

The contest is open to 3-person teams of K-12 students living in Kansas. The contest will have two divisions, K-8th grade and 9th - 12th grade. **Deadline for submitting an entry form at the contest website is March 2, 2026.** Additional information is available on the contest web site at <http://beanstalk.agronomy.ksu.edu> and questions can be emailed to beanstalk@ksu.edu.

County Fair Information

It is hard to imagine that the county fairs will be here before we know it. The planning has begun. Watch for more details in future 4-H newsletters and emails to 4-H families.



Fair Superintendents and Assistant Superintendents

Both fairs need superintendents and assistants. We need many parents and youth to help ensure a smooth-sailing event. Don't forget—these leadership and citizenship opportunities can be counted in a 4-H member's record book.

- Superintendents and assistant superintendents must be present during the exhibit judging times they sign up for and at exhibit dismissal.
- Help with exhibit check-in day or animal entry is appreciated for the areas in which they signed up.

Interested 4-H members, parents, and volunteers should sign up online by **May 1**. You will find a link at <http://www.centrankansas.ksu.edu/4-h> under "County Fair". Click on the specific fair and then Superintendent/Assistant Superintendent Sign Up.

Note: Sign-up is not open at this time but will be opening soon.

Fair Papers

The fair papers for the county fairs will be posted online as soon as they become available. Watch the newsletter and/or email for when they are posted.

2026 Fair Dates

Mark your calendars! Fair dates for 2026 have been announced. Note the corrected fair dates for the Ottawa County Fair.

Ottawa County Fair: July 14-18
Pre-Fair Dates: July 13

Tri-Rivers Fair: July 30 - August 2
Pre-Fair Dates: July 25 - 29

Watch the newsletter and emails for dates for pre-fair judging and other fair activities.

Fair Theme

The fair theme is the same for both fairs this year. It is: **Stars, Stripes, and Summer Nights**

4-H Camp Update



A quick update regarding 4-H Camp...

- 4-H Camp is for ALL AGES!
- 4-H Camp Details on cost, dates and age categories can be found at <https://www.rockspringsranch4hcamp.org/sessions-rates/>
- 4-H Camp 2026 will be using the "Open Enrollment" method. 4-H Open Enrollment means families can register for any 2026 4-H Camp Session that fits their schedules. For additional information, go to <https://www.rockspringsranch4hcamp.org/>.
- Our older 4-H members who would typically be interested in serving as a camp counselor are encouraged to participate in the LIT and/or CIT camp sessions at Rock Springs.
- Registration is handled on a first-come, first-serve basis.
- The Central Kansas District 4-H Council budget scholarship will be announced soon for 4-H members to attend 4-H camp. In order to receive this scholarship, an approved scholarship application must be received no later than **Wednesday, April 1, by 5:00 p.m.** at either of Extension Office.
- Other scholarships funds may be available.

If any family has already paid their registration in full, please contact Kate.

K-State Admissions Partners to Empower Families on the College Journey

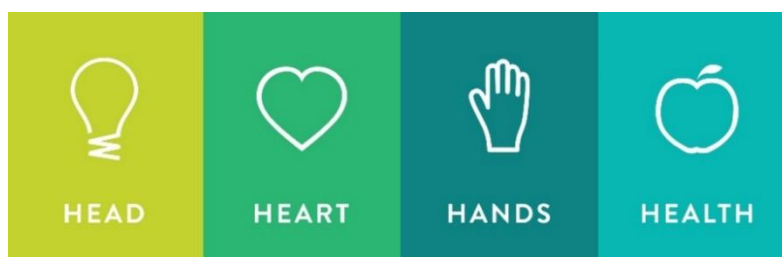
Kansas 4-H and K-State Admissions are partnering to help youth and their families confidently navigate the college journey. Through a series of interactive sessions, participants will gain a clear understanding of the college preparation process, explore strategies for financing education - including scholarships, loans and other resources - and learn how students are supported both academically and personally, from both the student's and parent's perspective. We will also focus on "beginning with the end in mind," equipping youth with tools to prepare for life after college, create personalized plans, and take ownership of their future. In addition, open office hours will provide families with direct access to experts for questions and guidance, ensuring every student feels prepared and empowered for success. These sessions will be targeted at 4-H parents of juniors and seniors in high school; 4-H members are also encouraged to attend.

Sessions will not be recorded, to maintain the privacy and confidentiality of participants.

Upcoming Sessions (all 6:00 p.m. - 7:00 p.m. via Zoom):

- **February 10:** Begin with the End in Mind - Preparing for Life After College
- **March 10:** Create Your Own Plan - Personalized College and Career Planning
- **April 14:** Open Office Hours - Expert Guidance and Q&A

Registration information will be emailed directly to families via 4-H Online. For questions, please contact kansas4h@ksu.edu.



Leadership Opportunities

Districtwide Leadership Workshops

Come learn some fun, hands-on activities you can use at club meetings for icebreakers, team building and group discussion! There are two workshops scheduled.

- Monday, March 30, 7:00 p.m. - 8:30 p.m. – K-State Salina Campus, Tech Center, Room 118.
Please register by Monday, March 23.
- Thursday, April 30, from 7:00 p.m. - 8:30 p.m. - Minneapolis Extension Office, 315 W. 3rd, across the street south of the courthouse.
Please register by Thursday, April 23.

Registration is available at <http://www.centrankansas.ksu.edu/4-h/> by clicking the link under “Upcoming Events & Online Registration.”

This workshop will count toward the leadership workshop requirement for the pin application. 4-H members, parents and volunteers are all encouraged to attend. Participants will learn practical activities they can take back to their clubs and other groups they are involved with. Key lessons emphasized will include teamwork, cooperation, leadership, problem-solving, communication, and decision making.

2026 FCS National Championship & Conference

The 4-H Family and Consumer Science National Championship and Conference is an event that provides 4-H members the opportunity to compete on a national stage against their peers from across the country.

A team from the Central Kansas District qualified to participate as the 1st Place Senior FCS Judging Team that participated at the Kansas State Fair in 2025. Team members were Acacia, Smoky view, Kyson, Willing Workers, and Eian, Smoky View. Eian placed 3rd overall for the individual test portion of the FCS Bowl.



Babysitting Clinic

March 16 9AM-Noon
Central Kansas District Extension Office
315 W 3rd, Minneapolis

OR

March 18 9AM-Noon
Salina Family Healthcare Center
651 E Prescott Rd, Salina

Registration Fee: \$5



**SPACE IS LIMITED. REGISTER ONLINE:
[HTTPS://TINYURL.COM/BABYSITTING2026](https://tinyurl.com/babysitting2026)
BY MARCH 9**

The Business of
Babysitting

Health and Wellness
Intro to First Aid/CPR

Development
and Activities



Are you interested in becoming a babysitter? Join K-State Extension along with community partners to learn about the responsibility of babysitting.

FOR AGES 11-15

This institution is committed to providing equal opportunity for participation in all programs, services, and activities. Program information may be available in languages other than English. Language access requests and reasonable accommodations for persons with disabilities, including alternative means of communication (e.g., Braille, large print, and American Sign Language), may be requested by contacting Lisa Newman four weeks prior to the start of the event at 785-309-5850 or lnnewman@ksu.edu. Requests received after this date will be honored when it is feasible to do so. Language access services, such as interpretation or translation of vital information, will be provided free of charge to limited English proficient individuals upon request.

Kansas State University is an equal opportunity provider and employer.

**KANSAS STATE
UNIVERSITY**

Extension
Central Kansas District



Kansas 4-H Day *with* K-State Women's Basketball



**K-State Wildcats Vs.
Iowa State**
WILL BE TELEVISED



Step 1: Pick a Package:

\$28 Package Includes:

- Ticket
- \$10 Concession Voucher
- T-Shirt

\$18 Package Includes:

- Ticket
- \$10 Concession Voucher

Step 2: Register to get Tickets:

Use the QR Code or the link to register



<https://tinyurl.com/5x84fp33>

- ✓ Pick up ticket packages on game day 10:00 am - 12:30 pm
Location TBA closer to event.
- ✓ Doors open for the general public at 12:00 pm
- ✓ Tip-off at 1:00 pm

Online registration for this event will be due February 8, 2026. No paper registrations will be accepted.

K-State Research and Extension is an equal opportunity provider and employer. Issued in furtherance of Cooperative Extension Work, Acts of May 8 and June 30, 1914, in cooperation with the U.S. Department of Agriculture, Director of K-State Research and Extension, Kansas State University, County Extension Councils, Extension Districts. Resource:

<https://www.apa.org/topics/resilience>

Sunday, March 1, @ 1:00 PM

Districtwide Project News

Horse ID's - Due by May 29

The Kansas 4-H Horse ID Certificate (P1039) can be found at https://bookstore.ksre.ksu.edu/item/horse-identification-certificate_P1039. The form was updated for the 2024-2025 4-H program year. Please use the new form and destroy previously used 4-H Horse ID Certificates. As a reminder, to properly identify your horse:



- Complete the 4-H Horse ID Certificate.
- The form **MUST BE** front and back of one page, not 2 separate pages. The date on the lower right corner on the back of the form must say July, 2024.
- A standard-size color picture **MUST BE** attached for identification purposes. This should include:
 - ALL four feet and legs showing.
 - Profile of the horse with the head turned a quarter turn toward the camera.
 - ALL markings need to be clearly visible in the photo.
- Have your Extension Agent sign it and make a copy.
- A **COPY** of the Horse ID Certificate is kept on file in the Extension Office.
- The 4-H Horse member maintains the **ORIGINAL** certificate.
- The **ORIGINAL CERTIFICATE** is presented by the 4-H member to show staff for check-in at the local 4-H horse shows.
- This form can be signed anytime between now and **June 1, 2026**.

Registration papers **WILL NOT** be accepted to identify horses for the 4-H Horse Project. An example of the Horse ID Certificate can be found at:

<https://www.kansas4-h.org/projects/animal-science/horse/docs/SampleHorseID.pdf>

The 4-H Horse Show Rulebook (S133) be found at https://bookstore.ksre.ksu.edu/item/kansas-4-h-horse-show-rulebook_S133. Supplemental educational materials will also be released throughout the year to assist 4-H members, leaders and Extension staff with the 4-H Horse program.

4-H Project Curriculum

There are many resources available to support 4-H members and project leaders with their projects. If you are curious about what the curriculum looks like, please contact the Extension Office — we likely have copies you can check out for review. We are also happy to help direct you to sources if you would like to purchase your own copies. If you have questions or need guidance, reach out to your club leader or call the Extension Office.

Insect Art Contest

The K-State Research and Extension Pesticide Safety and IPM Program is hosting its annual insect-themed art contest, open to all ages and skill levels in Kansas! This year, the theme is “Metamorphosis Magic.” The goal is to explore which insects are active or inactive at night and why, then create artwork that fits the contest theme.



Entries must be postmarked or received by April 15, 2026. For more information and to register, go to <https://www.ksre.k-state.edu/pesticides-ipm/learning-and-resources.html>



EXTRA

NEWS FOR CENTRAL KANSAS DISTRICT ORGANIZATIONAL LEADERS

February Check-Up

Five months into the 2025-2026 4-H year...where has the time gone? Are you ready for the monthly check-up? There are many spring activities in front of us that are about to spring into action. Where is the club heading? How are members doing on projects? What great and wonderful opportunities are the project leaders teaching? Let's take a look . . .

Review

- _____ **4-H Club Day Run-Offs explained to the 4-H members.** Run-Offs conducted Saturday, February 14.
- _____ **4-H Newsletter** read and important dates marked on calendar.
- _____ Review highlights from the *4-H Newsletter* at club meeting.

To-Do

- _____ Volunteer Enrollment completed on all project leaders in 4HOnline.
- _____ Project Leaders conducting project meetings.
- _____ 4-H Club members inviting friends to join 4-H. Parents encouraging other parents to explore 4-H.
- _____ Check club mailbox at the Extension Office.
- _____ Report from the January 4-H Council meeting.
- _____ Encourage 4-H members to update their Achievement Pins and Permanent Records.
- _____ Check club's progress toward goals and club annual summary up-to-date.
- _____ Visitors reported to Kate (klittich@ksu.edu).



Promote/Recruit

- _____ 4-H Camp promoted.
- _____ 4-H Discovery Days promoted, June 3-5.

Remember


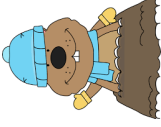


- _____ Reminder . . . if needing to cancel from 4-H Club Day, please call the Salina Extension Office by **NOON, Thursday, February 12.**
- _____ 4-H Club Day at Salina South Middle School, 2015 Simmons (parking and entrance off of 4th Street), **February 14.**
- _____ 4-H Club Day contestants reminded that **NO PIANO OR KEYBOARD** is available for practice.

ORGANIZATIONAL LEADER UPDATE

The next Organizational Leader Update will be held at 7:00 p.m., Thursday, April 9, via zoom. We will be discussing county fairs and more! You won't want to miss this update!



February, 2026

Sunday	Monday	Tuesday	Wednesday	Thursday	Friday	Saturday
UPCOMING DATES: March 1 - ALL District and State Scholarships DUE Online 14 - Spring Beef Weigh-In 23 - 4-H Council Meeting, Minneapolis 28 - Regional 4-H Club Day, Clay Center 30 - Districtwide Leadership Workshop, 7:00 p.m. - 8:30 p.m., Salina						
1	2	3	4 Open House at new Extension Office, Minneapolis, 3:00 p.m. - 6:00 p.m. 	5 	6	7
8 Cloverbud Meeting, First Christian Church, Salina 2:30 p.m.	9	10	11	12 4-H Club Day cancellations DUE by noon	13 4-H Club Day digital submissions DUE by noon	14 4-H Club Day, Salina South Middle School 
15	16	17	18	19	20	21 Kansas 4-H Horse Panorama, Rock Springs 4-H Ranch
CIA—Topeka 						
22 Kansas 4-H Horse Panorama, Rock Springs 4-H Ranch	23	24	25	26	27	28 District 4-H Quiz Bowl, First Christian Church, Salina, 8:00 a.m.



Central Kansas Extension District

Salina Office

Kansas State University Salina
Aerospace and Technology Campus
2218 Scanlan Ave
Salina, KS 67401-8196

Address Service Requested

THE 4-H YEAR IN FULL SWING

Dear 4-H Families,

As we kick off 2026, we're excited to focus on helping every member become 4-H Beyond Ready! This means building confidence, leadership, and practical skills that will serve youth both in and out of 4-H. The coming months are full of opportunities to grow those skills through events like 4-H Club Day, Quiz Bowl, leadership workshops, and hands-on project activities. We encourage families to jump in, try new experiences, and make the most of everything 4-H has to offer. Even if an event is new to you, it might be the one that sparks a new interest or builds confidence for the future. Every event, challenge, and activity is an opportunity to grow, learn, and shine—so let's make this year count!

Ellie

Minneapolis Office • 307 N Concord • Suite 190 • Minneapolis, KS 67467-2140 • 785-392-2147 • Fax 785-392-3605

Salina Office • K-State Salina • 2218 Scanlan Ave • Salina, KS 67401-8196 • 785-309-5850 • Fax 785-309-5851