

centralkansas.k-state.edu/4-H

Central Kansas District 4-H

February, 2022

March, 2022

Sarah E. Maass, Ph.D.

District Extension Agent
4-H Youth Development
semaass@k-state.edu

Kate Littich

District Program Assistant
4-H Youth Development
klittich@ksu.edu



K-STATE
Research and Extension

K-State Research and Extension is an equal
opportunity provider and employer.

Kansas4-H.org

PROJECT AWARDS GOING TO STATE CONTEST

Congratulations to those individuals who have their Project Award Applications going to the state contest:

Beef:	Josi Schrader, Solomon Valley
Meat Goat:	Marik Anderson, Smoky View
Plant Science:	Ariana Baltazor, Willing Workers
Poultry:	Emma Littich, Smoky View
Rabbits:	Acacia Pracht, Smoky View
Reading:	Acacia Pracht, Smoky View
Sheep:	Reygan Schrock, Cardinal

Congratulations

GAVEL GAMES & MODEL MEETINGS RESULTS

Congratulations to all the participants! The judges had positive comments and enjoyed your presentations! Remember, teams presenting on Friday were not eligible for Regional 4-H Club Day. RQ = Regional Qualifier

Gavel Games: Pre-Junior

Pleasant Valley – participation

Gavel Games: Junior

Boldly Go Junior A – Blue
Boldly Go Junior B – Purple (1st Alt.)
Cardinal – Purple (RQ)
Gypsum Valley – Purple (RQ)
Pleasant Valley – Purple (2nd Alt.)
Sunny Valley – Blue

Gavel Games Senior

Boldly Go Senior A – Blue (1st Alt.)
Boldly Go Senior B – Purple (RQ)
Gypsum Valley – Blue (2nd Alt.)
Sunny Valley – Red

Model Meetings

Friendly Valley (Friday) – Blue
Smoky View – Blue (RQ)
Willing Workers – Purple (RQ)

CHANGES TO YOUR EMAIL & MAILING ADDRESSES

If you go to 4HOnline and change your mailing address or email address, please be sure to let the Extension Office know. We do not receive any notification that changes have occurred. To help make sure you will receive the 4-H Newsletter and other important information via the mail and email, please let us know.

4-H CLUB DAY INFORMATION – MARCH 5, 2022

Results from the 2022 4-H Club Day (including run-off information) will be posted on the Central Kansas District website (<https://www.centrankansas.k-state.edu/4-h/4-hclubday/>) on March 5, 2022, as they become available.

The 4-H Club Day Committee is excited to report there are plans in process for a hands-on #InspireKidsToDo community service project. Further information will be sent out with the 4-H Club Day Schedule along with information about FCS and Photography Judging Schools/Contests, and a special opportunity from the K-9 Capers District Dog Project.



In light of several considerations (including pandemic related concerns), an option to submit pre-recorded presentations will be available for 4-H Club Day 2022. This option is intended to encourage all 4-H members to participate in preparing and giving a presentation, regardless of health situation or scheduling conflicts.

- If a 4-H member has signed up for an in-person presentation and a health situation necessitates switching to a digital submission after the January 24 registration deadline, families will need to communicate with Kate to move to the digital option by calling 785-309-5850 or emailing her at klittich@ksu.edu.
- Remember, the option to record and submit digitally is only available for Sharing, Junior Demonstrations/Illustrated Talks, Junior Project Talks, Senior Demonstrations/Illustrated Talks, and Public Speaking.
- Guidelines for recording presentations may be found on pages 8-10 of the December/January newsletter along with the guidelines for in-person 4-H Club Day.
- All digital submissions will be due by 12:00 p.m. (noon) on March 4, 2022.

HELP WITH 4-H CLUB DAY PRESENTATIONS

One of the greatest benefits of 4-H is learning to do public presentations! Resources are on the 4-H website to help you with the planning and presenting demonstrations/illustrated talks, project talks, and public speaking. This information is intended to supplement the 4-H Club Day Guidelines of the December/January 4-H Newsletter (see pages 8-10). If you have any questions or still cannot find helpful information, please contact Kate or Sarah at the Extension Office. The videos are available at <http://www.centrankansas.ksu.edu/4-h>, under 4-H Club Day on the left-hand side of the page:

- Demonstration & Illustrated Talks Instructional Video
- Project Talk Example Video
- Public Speaking Example Video
- Demonstration Example #1 Video & #2 Video



4-H NEWSLETTER DEADLINES FOR 2022

If you have something you would like in the *4-H Newsletter*, be sure to email it to semaass@k-state.edu. The deadline for April/May is March 10; June/July is May 11; and August/September is July 4.

LIVESTOCK INFORMATION

ATTENTION LIVESTOCK EXHIBITORS – 2022 YQCA CERTIFICATION

Youth for the Quality Care of Animals (YQCA) is a national, multi-species youth livestock quality assurance program that focuses on food safety, animal well-being, and character development, through an age-appropriate educational curriculum for youth 8-21 years of age. This program is an annual certification that grows with a young person, so the learning modules are different every year. ALL livestock exhibitors (beef, swine, sheep, meat goat) are once again required to be YQCA-certified in order to participate in the 2022 Ottawa County Fair, Tri-Rivers Fair, Kansas State Fair Grand Drive, and/or Kansas Junior Livestock Show (KJLS). This includes youth who will be showing market animals, commercial breeding females, and/or registered purebred breeding females. Since the program is designed to be a national standard for youth ages 8 and older, 7-year-olds who will be participating are again exempt from completing this requirement.

2022 Certification dates are set for March 9th (Minneapolis Courthouse Meeting Room) and March 10th (Salina, K-State College Center) and will begin at 6:30 p.m. Masks and social distancing will be required in Salina since we will be on campus and masks are strongly encouraged for Minneapolis. Parents are asked not to attend to allow for more exhibitors to attend the certification training due to social distancing. If you have questions or concerns about this, please contact Justine Henderson (jwh04@ksu.edu or 785-392-2147). Also, know that if you do not wish to attend in-person training, the online course is available. **Follow the link <https://yqca.learnrow.io/Account/Login> to login into your 4H Online account and sign up for a class.** For more details about the YQCA program, contact Justine.

BEEF CHECK-IN FOR DISTRICT BEEF PROJECT MEMBERS

Beef Check-in will be Saturday, March 12, in two locations. From 8:00 -11:30 a.m. we will be at Glenn Engelland's Farm and from 1-3 p.m. at Spencer Schrader's Farm. Regardless of where you plan to go, please go to <http://www.centrankansas.ksu.edu/4-h> and click on the Beef Check-in sign up for a spot before Thursday, March 10. Sign-up will be ONLINE ONLY. Both check-in locations are open to all District 4-H Members. At both sites, we will be weighing, tagging market animals, and tagging Commercial heifers. Commercial heifers that will not be nominated to attend state shows can be tagged at home (will need to purchase tags from the Extension Office) and a photo taken showing the heifer with the tag in the ear by May 1. Photos MUST be emailed to Justine by the May 1st deadline. Registered heifers do not have to be checked in or nominated. All animals will have an official "Kansas 4-H" ear tag put in the ear at a cost of \$3.50/tag. Changes to the nomination process for the Kansas State Fair and/or Kansas Junior Livestock Show will be coming soon. Keep an eye out for more information in your email, 4-H newsletter, and Central Kansas District website.

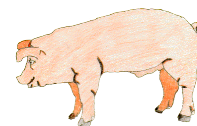
CHECK-IN FOR: MARKET MEAT GOAT & MARKET LAMB



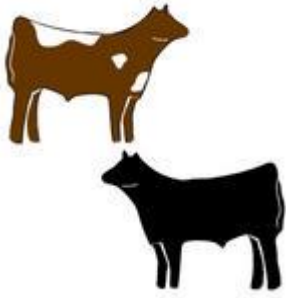
The Districtwide tagging & check-in will be held April 27, in Salina (fairgrounds) and April 28, in Minneapolis (fairgrounds) from 4 to 6 p.m. for meat goats and lambs. Tags will cost \$3.00/tag. Changes to the nomination process for the Kansas State Fair and/or Kansas Junior Livestock Show will be coming soon. Keep an eye out for more information in your email, 4-H newsletter, and Central Kansas District website.

ATTENTION: SWINE EXHIBITORS

4-H members will check in their own swine projects through a required process via email. Information on this process will be sent out to ONLY the families who have children enrolled in the swine project. If you are not already enrolled in the swine project and plan to show swine, be sure to get enrolled in 4HOnline.



CENTRAL KANSAS BEEF CLASSIC SHOW



This “Blow and Go” show will be held on Saturday, April 23. The show is open to any bonafide 4-H and FFA member who has not yet reached their 19th birthday before January 1, 2022. There will be a special class for the 4-H members enrolled in a club in the Central Kansas District. The entry fee is \$25 per head, but after April 14 the fee will increase to \$30 per head. All fees must accompany registration. For registration information, please go to the District website (<http://www.centrankansas.ksu.edu>), click on 4-H Youth and Development on the left-hand side, and a flyer will be located under Upcoming Events and Online Registration.



COUNTY FAIR INFORMATION

It is hard to imagine that the county fairs will be here before we know it. The planning has begun. Watch for more details in the future 4-H newsletters and in emails to 4-H families.

FAIR SUPERINTENDENTS AND ASSISTANT SUPERINTENDENTS

The dates for the Ottawa County Fair are July 19-22. The Tri-Rivers Fair will be on August 3-7 (pre-fair days on August 1 & 2). Both fairs need superintendents and assistants. We need a lot of parents and youth to help ensure a smooth-sailing event. Do not forget that these leadership and citizenship opportunities can be counted in the 4-H member's record book. Interested 4-H members, parents and volunteers...should sign up online by April 1 by going to <http://www.centrankansas.ksu.edu/4-h>, and you will find a link under “Upcoming Events and Online Registration” for County Fair Superintendent and Assistant Superintendent Sign-up. Thanks to those who have already volunteered.

FAIR PAPERS

The fair papers for the county fairs will be posted online as soon as they become available. Watch the newsletter and/or email for when they are posted.

PHOTOGRAPHY THEMED CLASS AT THE COUNTY FAIRS

We are pleased to announce the theme for the 2022 4-H Photography Competition is **It's All in the Details**. What comes to mind when you think about details? Close-up images is what this themed class will be focusing on. More details on this competition will be in the respective county fair papers. Be sure and check out the specifics when the fair papers are available later this year.

THEME FOR OTTAWA COUNTY FAIR: *Blue Jeans & Country Dreams*

THEME FOR TRI-RIVERS FAIR: *Fancy Like...Fair Life!*

LEADERSHIP OPPORTUNITIES

4-H COUNCIL NEWS

March Meeting

The March 4-H Council Meeting will be held on Monday, March 28, in Salina. We will meet in the College Center Conference Room. Council members should watch their email for the agenda packet closer to the meeting date. The theme for the meeting is St. Patrick's Day.

May Meeting

The May 4-H Council Meeting will be held on Monday, May 23, at 7 p.m., location TBD. The theme for this meeting will be Hawaiian.

2022 CENTRAL KANSAS DISTRICT 4-H AMBASSADORS

Congratulations to the new Central Kansas District 4-H Ambassadors:

Marik Anderson, Smoky View

Ariana Baltazor, Willing Workers

Continuing Ambassadors are:

Brynna Anderson, Smoky View

Emma Littich, Smoky View

Olivia Boucek, Woodsdale

Hensli Lofdahl, Smoky View

Lane Fritz, Gypsum Valley

Kayla Norberg, Smoky View

Reygan Schrock, Cardinal



VOLUNTEER SCREENING ORIENTATION

We will have two more volunteer screening orientations this year. These have been scheduled for March 22, and April 26. To attend, please RSVP online no later than 1 week prior to the orientation you'd like to attend. The link to RSVP for an orientation can be found at <http://www.centrankansas.ksu.edu/4-h/>, under Upcoming Events and Online Registration. If you do not have access to the web, please contact either Extension Office. If there are not enough individuals interested in the orientation, it will be cancelled and those who sign up by the deadline will be notified.

DISTRICTWIDE LEADERSHIP WORKSHOPS

Come learn some fun activities you can use at club meetings for ice-breakers, team building, and discussion. The workshop will be held on Tuesday, March 29, from 7-8:15 p.m. in the College Center Conference Room.

Please register by Thursday, March 24. Another districtwide leadership workshop will be held on Thursday, April 21, from 7-8:15 p.m. in the Minneapolis Courthouse Meeting Room. **Please register by Tuesday, April 19.** Register by going to <http://www.centrankansas.ksu.edu/4-h/> and click on the link under "Upcoming Events & Online Registration."

Remember...This workshop will count for the leadership workshop on the pin applications. **Who can attend?** 4-H Members, Parents, and Volunteers can attend! Participants will learn activities that they can take back to their clubs and other groups they work with or are a part of. Key lessons that will be emphasized are: teamwork, cooperation, leadership, problem-solving, communication, and decision making.

4-H COUNCIL SCHOLARSHIPS

4-H Council scholarships are available for numerous 4-H sponsored events. If you are interested in receiving a scholarship, it is important that you not only complete the 4-H Council Scholarship Application (<http://www.centrankansas.k-state.edu/4-h/documents/Scholarship%20Application.doc>), but that it is submitted to either Extension Office at the same time you pay the registration fee. **Any applications received after the registration deadline will not be considered for a scholarship.**

KANSAS 4-H SHOOTING SPORTS AGE

The Kansas 4-H Shooting Sports program adheres to the National Shooting Sports Policies. The national policy regarding youth participation is stated as follows:

"4-H Shooting Sports Programs are open to all youth 8 years of age or older (as of Jan. 1 of the current year) without regard to race, color, sex, handicap, religion, age or national origin. Each state Land Grant University determines 4-H maximum age eligibility. Note that age eligibility for National 4-H Shooting Sports Events is determined by the National 4-H Shooting Sports Committee and may be different than that of other states. 4-H Cloverbuds (age 5-6) and members age 7 are not eligible for any aspect of 4-H shooting sports programs, as these are not age-appropriate activities."

Inappropriate activities include attending shooting sports meetings and practices. 4HOnline does not allow youth under age 8 to enroll in 4-H Shooting Sports.



4-H CAMP UPDATE

A quick update regarding 4-H Camp...

- 4-H Camp is for ALL AGES!
- 4-H Camp Details on cost, dates, and age categories can be found at <https://www.rockspringsranch4hcamp.org/wp-content/themes/rsrscamplanding/assets/pdf/rock-springs-ranch-camp-brochure.pdf>
- 4-H Camp 2022 will be using the "Open Enrollment" method. 4-H Open Enrollment means families can register for any 2022 4-H Camp Session that fits their schedules. For additional information not in the brochure link above, go to <https://www.rockspringsranch4hcamp.org/>
- If your child(ren) want to continue to camp with some of the same youth from the counties and districts we have been camping with, session #3 is the one to select (June 15-18). If these dates don't work for your schedule, then select another time that works.
- Our older 4-H members who would typically be interested in serving as a camp counselor are encouraged to participate in the LIT and/or CIT camp sessions at Rock Springs.
- **Registration is handled on a first-come, first-serve basis.**
- The Central Kansas District 4-H Council budgeted a \$110 scholarship for 4-H members to attend 4-H camp. In order to receive this scholarship, an approved scholarship application must be received no later than **Monday, April 25, by 5 p.m.** at either of Extension Office.
- The Saline County 4-H Development Fund provides scholarships to Central Kansas District 4-H members for 4-H Camp as well. However, the amount of their scholarship has not yet been determined. If a 4-H member submits the 4-H Council Scholarship Application and it is approved, the member will also receive this scholarship automatically.
- Once the scholarship form has been received and approved, one check will be written to Rock Springs to cover the scholarships for all of our 4-H members.
- If any family has already paid their registration in full, please contact Sarah (semaass@k-state.edu). Scholarships will be handled on a case-by-case basis in these situations.



BRING YOUR 4-H PROJECTS TO LIFE

A monthly series connecting your 4-H projects, college, and careers.



4-H Project

Each month we will focus on a different 4-H project for 1-hour in a virtual setting. You may find a new passion!



Grow in Your Project Work

Explore ways you can enhance your learning activities within your favorite projects.



Connecting to College & Career Readiness

College professors, professionals in the field, and others will share their experience(s) and help participants grow.

K-STATE
Research and Extension



K-State Research and Extension is committed to providing equal opportunity for participation in all programs, services and activities. Accommodations for persons with disabilities may be requested by contacting the event contact Lindsey (620-241-1523 / lmueting@ksu.edu) or Sarah (785-309-5850 / semaass@ksu.edu) two weeks prior to the start of the event. Requests received after this date will be honored when it is feasible to do so.
Kansas State University Agricultural Experiment Station and Cooperative Extension Service.
K-State Research and Extension is an equal opportunity provider and employer.

K-STATE
Research and Extension



Bring your 4-H projects to life is focused toward 10-14 year olds, however other youth are welcome to attend. Registration links will be on our website under Upcoming Events and Online Registration and will be due the Tuesday before the Bring Your 4-H Projects to Life session.

Save the Dates:

March 10, 7:00 p.m. – Topic: TBD
April 14, 7:00 p.m. – Fashion Studies
May 12, 7:00 p.m. – Wildlife

4-H SCHOLARSHIPS

Attention High School Seniors!! Are you in search of some funds to further your college education? Here are several 4-H scholarships you may be eligible for:

LOCAL 4-H SCHOLARSHIP INFORMATION

Some CKD Local 4-H Scholarship & Tri-Rivers Fair Scholarship information is now posted on the CKD 4-H Scholarship website - <https://www.centrankansas.k-state.edu/4-h/scholarships/index.html>

All scholarships will be due ONLINE no later than March 1, 2022.

If you need a letter of recommendation from Sarah, please send her an email (semaass@k-state.edu) requesting a letter. Be sure to include your most current resume and 4-H permanent record with the email. If possible, she asks for 3-4 weeks to complete the letter of recommendation prior to the due date.

KANSAS 4-H STATE SCHOLARSHIP INFORMATION

For more information on the Kansas 4-H Scholarships, please go to <https://www.kansas4-h.org/resources/awards-and-recognition/scholarships.html>

All scholarships will be due ONLINE no later than March 1, 2022.

CKD Safe Tractor & Machinery Operation Training

Saturday, March 5th at 9:00 a.m.

Great Plains Conference Center

1525 E North St, Salina, KS 67401

The National Safe Tractor and Machinery Operation Program (NSTMOP) is designed for 14- and 15-year-olds seeking employment in production agriculture.

Core content areas include:

- Safety basics
- Agricultural hazards
- Tractors
- Connecting and using implements
- Materials handling

Students are certified after successfully passing a 50-question test at the training and doing both an operating skills test and a driving test administered by the employer.

Scan here for registration link!



SIGN UP: https://kstate.qualtrics.com/jfe/form/SV_bxss9WKVdp4AWqy

MANUAL COST: \$15 – Pick up at local Extension Office

BRING: Your course manual and enrollment form. Pay and pick up your course manual at your local Extension Office. Please pick up your manual PRIOR to the course.

For more information or to RSVP, please contact either CKD office at:

Salina 2218 Scanlan Ave.
(785) 309-5850

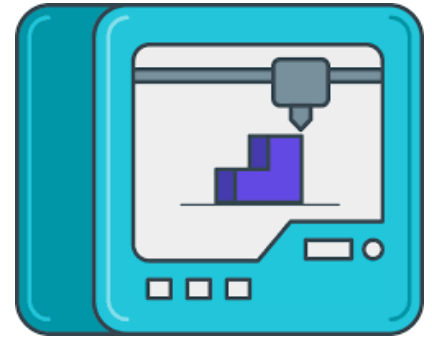
Minneapolis

307 N. Concord
(785) 392-2147



3-D PRINTING VIRTUAL DAY CAMP

Two 3-D Printing Virtual Day Camps will be held the week of spring break. This will be an exciting opportunity for 4-H members ages 10-13 in the Central Kansas District and McPherson County to learn more about 3-D printing, problem-solving, and creating one or two items that will be printed! The cost will be \$10/person. Registration and payment are due March 7.



Virtual Day Camp 1

- Session 1 - Tuesday, March 15, 2:00 p.m. - 4:00 p.m.
- Session 2 - Thursday March 17, 2:00 p.m. - 4:00 p.m.
- An optional help session will be available on Friday, March 18, 2:00 p.m. - 3:30 p.m.

Virtual Day Camp 2

- Session 1 - Wednesday, March 16, 10:00 a.m. - 12:00 p.m.
- Session 2 - Friday, March 18, 10:00 a.m. - 12:00 p.m.
- An optional help session will be available on Friday, March 18, 2:00 p.m. - 3:30 p.m.

Virtual Day Camp 1 and Virtual Day Camp 2 will cover the exact same content.

Each participant will need to have their own device (computer preferred otherwise a tablet should work) with Wi-Fi access.



Every participant will be able to have up to two items printed. Items will be available for pickup at the Extension Offices in mid-April and participants will be notified via email when they are ready.

This virtual day camp is sponsored by the Alpha Rho Chapter of Epsilon Sigma Phi, an Extension Professional Association.

Shawnee Co Picture Perfect Workshop

Ted Ensley Gardens, Shawnee Lake, Topeka KS

April 24, 2022 from 10 am - 3 pm

Lunch/Photo Judging: 12 - 1pm

Food truck options onsite or bring a picnic

Classes led by 4-H Youth Leaders

**Hands-on classes in the park,
online spotlights of careers in photography,
youth photo judging contest,
plus videos to improve technical skills**

*What to Bring: camera and/or smartphone, blanket to sit on,
reusable drink container, colorful umbrella*

\$10 per participating youth or adult

Register and pay by April 1.

Details on page 2.

Kansas State University is committed to making its services, activities and programs accessible to all participants. If you have special requirements due to a physical, vision, or hearing disability, contact Grace Wiens 785-232-0062, extension 120.

Kansas State University Agricultural Experiment Station and Cooperative Extension Service

K-State Research and Extension is an equal opportunity provider and employer.

K-STATE
Research and Extension



Shawnee
County

Online Sessions:

- ❑ Benefit from videos from Professional Photographers who capture the Northern Lights, take photos for National publication and more!
- ❑ Learn technical skills, including digital composite and painting with light
- ❑ Join in youth Photo Judging

Photo Workshop Class Descriptions

On-Site Sessions:

- ❑ Macro Maximizing - close-up shots of seasonal blooms
- ❑ Water in Motion - action shots of waterfalls and special effects
- ❑ Hot Spot Remedies - angles of the picture, shade aides
- ❑ Photos to Cards - create cards personalized by photos and participate in a service project for senior citizens
- ❑ Spring Landscapes - capture multiple landscapes in the park
- ❑ Portraits / Selfies - learn elements of lighting in portraits and options for capturing selfies
- ❑ Pagoda Patterns - seek and find multiple patterns around the Pagoda structure
- ❑ Pergola Framing - explore natural and creative framing techniques



**Register on our website by
April 1 by scanning the QR
Code or by using this link:**

<https://tinyurl.com/mamevyuy>





DISTRICTWIDE PROJECT NEWS

DISTRICTWIDE PROJECT LEADERS

Below are listed District Project Leaders which hold meetings throughout the year to help you with your projects. Check the newsletter for meeting dates and times or you may contact these leaders to find out the next meeting date, time and location. All phone numbers use the 785 area code unless otherwise indicated.

<u>Project</u>	<u>Name</u>	<u>Phone #</u>	<u>Email</u>
Beef	Spencer, Laci, Weston, & Josi Schrader	488-2135	schrader@twinvalley.net
Clothing & Textiles	Mary Bernhardt	825-7762	mary_bernhardt@cox.net
Cloverbuds	Allison Lecklider		allisonlecklider@yahoo.com
Cloverbuds	Linda Lecklider		linda.lecklider@gmail.com
Dog Care & Training	Sarah, Madison, & Tracy Repp	227-5647	k9capersckd4h@gmail.com
Dog Care & Training	Rebekah, Eric, Morgan, & Diana Thompson	452-2234	k9capersckd4h@gmail.com
Foods & Nutrition	Brynna Anderson	212-0365	brynnaanderson24@student.smokyvalley.org
Horse	Jennifer Watkins	452-5710	watkins9468@yahoo.com
Horse	Bev Seuser	823-8923 (home) / 643-0754 (cell)	classy3560@gmail.com
Horse	Camisha Stevenson	829-0965	stevensoncamisha@yahoo.com
Livestock Judging	Spencer, Laci, Weston, & Josi Schrader	488-2135	schrader@twinvalley.net
Photography	Tod Megredy	620-366-3160	tmegredy@gmail.com
Rabbit	Katrina Fahrenthold	826-5980	lfahrenthold@yahoo.com
Reading	Amber Pracht	212-5000	prachtamber@gmail.com
Sheep	Reygan Schrock	620-255-8050	rjschrock12@gmail.com
Sheep	Karson Pihl	212-0108	karsonpihl23@student.smokyvalley.org
Shooting Sports: Archery	Cole Malmberg	392-7712	c-dmalmberg@hotmail.com
Shooting Sports: Archery	Cade Rensink	392-0022	crensink@ksu.edu
Shooting Sports: BB Gun	Jay Wisbey	587-7987	jwisbey@ksu.edu
Shooting Sports: Hunting Skills	Eric Klein	392-0368	herbie57_57@hotmail.com
Shooting Sports: Shotgun	Eric Klein	392-0368	herbie57_57@hotmail.com

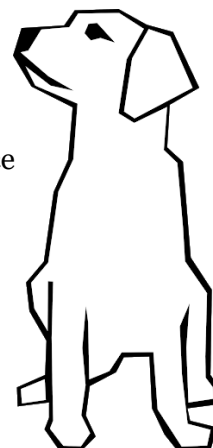
K-9 CAPERS NEWS

Dog Project Welcomes new members! We have new games and ideas to use for practice to help with Obedience and Team Building. In March we enjoy the indoor space at Kenwood Hall working on Obedience practice adding Showmanship, grooming guidance, and Agility safety training for new members. On April 12 we move to Ag Hall and the full courses for Agility and Rally-Obedience get set up with practices continuing through the summer. Practice times are Tuesday evenings 6:30 to 8:30 p.m. and we will have a few Saturday morning practices as well 9:30 a.m. - 12 p.m.

Kenwood Hall: March 1, 8, 29 April 12

Ag Hall: April 19, 26

To do a District Dog Project Talk, let us know so we can get it set up with the schedule and keep topics together when possible. Contact k9capersckd4h@gmail.com we are here to help.





DISTRICT 4-H HORSE NEWS

Horse IDs

A link to the Horse ID Form can be found at <http://www.centrankansas.ksu.edu/4-h> under 4-H Member Forms and Documents, "Horse ID." Be sure and check the back page, lower right-hand corner for the **January, 2020** date to ensure you have the correct form.

Items to note:

- The form **MUST BE** front and back of one page, not 2 pages.
- A standard size picture **MUST BE** attached. The picture should include all 4 legs and feet showing a profile of the horse with the head turned toward the camera. **ALL** markings must be clearly visible.
- Members, Parent/Guardian, Owners (if horse is leased) and County Agents **MUST** sign and date.
- The **ORIGINAL** 4-H Horse Identification Certificate **MUST** accompany the 4-H member. The county office and project leader may have a photocopy.
- This form can be signed anytime between now and May 1, 2022.

If you have any questions, please don't hesitate to contact the Extension Office.

Horse Level Testing

Anyone wanting to take levels tests before District Horse Show Entries are due (June 1, 2022), should be studying for them now and then contact Bev so that a time may be set up to take the test. You can email Bev at classy3560@gmail.com

DISTRICTWIDE CLOVERBUDS AT A GLANCE

Date: Third Thursday of the month
(February 17, March 17, April 21, May 19, June 16, and July 21)

Time: 6:30-7:30 p.m.

Location: Salina Heights Christian Church (NE corner of Cloud and Roach...use the east parking lot and door)

RSVP: Email Allison at allisonlecklider@yahoo.com

*Must be received at least two days before the meeting (Tuesday) so there are adequate supplies.



ATTENTION ALL 4-H MEMBERS & PARENTS – ADD/DROP INFORMATION

There are several responsibilities as a 4-H member and a 4-H parent. One of these responsibilities is the adding and dropping of 4-H projects. Due to the issues with 4HOnline, here are the details for adding and dropping projects.

Adding Projects: 4-H members **CAN ADD** 4-H projects in 4HOnline. Remember, you must be enrolled in the projects you plan to exhibit at the County Fair, no later than May 1. Be sure to check and double check the projects your child(ren) are enrolled in.

Dropping Projects: 4-H members **CAN DROP** 4-H projects in 4HOnline. Remember, you should plan to do a record book on all projects you are enrolled in.

It is **YOUR** responsibility to add any projects by May 1, 11:59 p.m. You will need to do this by logging into 4HOnline. After May 1, the system will not allow you to add or drop projects.

Remember, 4-H members must be enrolled in the project area(s) they will be exhibiting in at the county fair. If you have any questions, do not hesitate to contact either Extension Office.

INFORMATION ON FUNDRAISERS

ATTENTION 4-H FAMILIES, DISTRICTWIDE PROJECT LEADERS, & ORGANIZATIONAL LEADERS:

CENTRAL KANSAS DISTRICT FUNDRAISING POLICY



The Central Kansas Extension Board adopted a policy to go alongside the Kansas 4-H Policy regarding fundraising at the February, 2014, Board Meeting. The policy is:

“4-H members MAY NOT solicit funds to help fund their individual 4-H projects. 4-H members may fundraise for a specific 4-H EDUCATIONAL trip. Donations given directly to a 4-H member ARE NOT tax deductible because they do not go to a 4-H club or group. Any fundraising programs by clubs or individuals MUST be approved by the 4-H Youth Development Agent; the funds must be used to further the 4-H mission; the account procedures must be appropriate and in accordance with the POLICY; and the 4-H name and emblem must be properly used.”

Any fundraising done in the name of 4-H needs to be approved by Sarah.

DISTRICT 4-H COUNCIL FUNDRAISERS

Our spring 4-H Council fundraisers for the District will run from January 24 to March 31. Papa Murphy discount cards were made available in December, but members can continue to sell them until March 31. Clubs will receive \$1 for every card sold. Those members selling more than 10 cards will receive a \$25 scholarship to a 4-H event.

The second fundraiser option is products from Boon Supply, including kitchen gadgets, bags of all shapes and sizes, and now a variety of online learning experiences. This second fundraiser can be done completely digitally. On January 24 members will go to boonsupply.com/step1 and register with our fundraiser #405627. Then simply share the link with friends and family. All orders will ship directly to the customers and District 4-H Council receives 40% of the profits. Members will receive incentive prizes based on their amount of sales and clubs will receive \$1 for every Boon Supply item sold.

Any questions can be directed to Robyn Prickett at robynprickettks@gmail.com.

ANNUAL OTTAWA COUNTY 4-H FOUNDATION FUND DRIVE

The annual Ottawa County 4-H Foundation Fund Drive will be held March 1 – 31 this year.

TRI-RIVERS FAIRBOARD FUNDRAISER

The Tri-Rivers Fairboard would like to invite you to join the Dillon's Community Rewards Program which donates a percentage of your total Dillons bill to the Saline County Fair Association (Fairboard) which we use to support 4-H. You may sign up at: <http://www.dillons.com/communityrewards>

MATCH MADNESS

On Thursday, March 24, from 7 a.m. – 7 p.m. we will have an opportunity to donate money to the Saline County 4-H Development Fund at the Salina Fieldhouse OR online (from 12 a.m. – 11:59 p.m.) at <http://matchmadnessGSCF.org>. At this event the Greater Salina

Community foundation will MATCH the money you donate. This means extra “free” money for 4-H programs! We encourage your 4-H Club or individuals that wish to support 4-H members, to stop by the event with their donation, and take advantage of this opportunity to expand your contribution with these matching funds. Please put March 24 on your calendar!



MID-YEAR AWARD REVIEW PROCESS

Every year, 4-H members have the opportunity to complete a 4-H Member Achievement Plan otherwise known as the 4-H Pin Application. You should have received information about this award at the beginning of the 4-H year from your 4-H Club Leader. Be sure it is the Central Kansas District 4-H Pin Application found on our website (<http://www.centrankansas.ksu.edu/4-h>) For those of you who are new to 4-H, this process considers the entire 4-H year and everything that the 4-H member has done throughout the year. It is not something that is specifically based on one project like the Kansas Award Portfolios or Record Books are. This provides an opportunity for a 4-H member to set goals for their overall involvement in 4-H and earn a pin in the process. You can find the 4-H Member Achievement Plan at <http://www.centrankansas.ksu.edu/4-h> → Awards & Recognition → Member Achievement Plan. Regardless of what pin the 4-H member is applying for, they will all fill out the same form, but the items required will vary (see the details on the first page of the application).



Now is the time to do a **status check** on where the 4-H member is with their pin application. The Trips & Awards Committee would like to offer the 4-H members the opportunity to do a mid-year appeal, if they can determine right now that they are not going to be able to get the pin in which they have set out to achieve. There are lots of 4-H events that will still occur this year, but there are several that have come and gone. A 4-H member may have missed an opportunity or two. What does this all mean and what should I do? Here are some steps for the process:

1. Fill out the 4-H Pin Application as completely as you can to make it current.
2. Determine if you are on the right track. Are there still things that you need to complete? Check the 4-H Newsletter and Master 4-H Calendar (both available at <http://www.centrankansas.ksu.edu/4-h>) to see what other things are still yet to come this 4-H year.
3. If you have missed an opportunity and you do not see where it can be picked up later this 4-H year, please complete the CKD 4-H Deferral Appeal Process Form. This form can be found at <http://www.centrankansas.ksu.edu/4-h> → Awards & Recognition → Appeal Process. **Follow the directions on this form and submit it with a copy of your 4-H Pin Application to either Extension Office no later than 5 p.m., May 2.**
4. The Trips & Awards Committee will review your forms and get back to you with a response. This will allow you to know if you continue working towards your goal of achieving the pin, if you will be able to receive it in November. Keep in mind, the Trips & Awards Committee may ask you to do certain things in place of what you may have missed. All of this will be outlined in their response back to you.
5. Additionally, there is a document with helpful hints for parents on the website located at <http://www.centrankansas.ksu.edu/4-h> → Awards & Recognition → Helpful Hints for Parents.

If you have any questions regarding the 4-H Pin Application, the opportunity for the appeal, etc. please let Sarah know.





EXTRA

NEWS FOR CENTRAL KANSAS DISTRICT ORGANIZATIONAL LEADERS

FEBRUARY CHECK-UP

Five months into the 2021-22 4-H year...where has the time gone? Are you ready for the monthly check-up?

Review

- _____ *4-H Club Day Run-Offs explained to the 4-H members.* Run-Offs conducted Saturday, March 5.
- _____ *4-H Newsletter* read and important dates marked on calendar.
- _____ Review highlights from the *4-H Newsletter* at club meeting.

To-Do

- _____ Volunteer Service Application and Renewal Form completed on all project leaders in 4HOnline.
- _____ Project Leaders conducting project meetings.
- _____ 4-H Club members inviting friends to join 4-H. Parents encouraging other parents to explore 4-H.
- _____ Check club mailbox at the Extension Office.
- _____ Report from the January 4-H council meeting.
- _____ Encourage 4-H members to update their Achievement Pins and Permanent Records.
- _____ Check club's progress toward goals.
- _____ Visitors reported to Kate (klittich@ksu.edu)

Promote/Recruit

- _____ 4-H Camp promoted.
- _____ 4-H Discovery Days promoted, June 1-4.

YOUTH AS RESOURCES

Ever needed an extra hand putting together a 4-H meeting? Ever said, "If only, someone could do this job without supervision?" Have you spent endless hours searching for the "right" adult volunteer? Maybe the best adult volunteer was a TEEN. That's right! Or even a younger 4-H member. Why? Because teens and younger kids are not distracted by other priorities and they like to be needed. Also, they are usually technology gurus during this time of virtual programming. The next time you're looking for the perfect volunteer that needs no supervision...look for a 4-H member! You'll be pleasantly surprised.



is AMAZING!

MARCH CHECK-UP

There are many spring activities in front of us that are about to spring into action. Where is the club heading? How are members doing on projects? What great and wonderful opportunities are the project leaders teaching? Let's take a look....

- _____ A fun spring planned!
- _____ Have you contacted Sarah for a Zoom Orientation with your new account?

Review

- _____ 4-H Newsletter read and important dates marked on calendar.
- _____ Review highlights from 4-H Newsletter at club meeting.

To-Do

- _____ All screened volunteers enrolled in 4HOnline for the 2021-2022 4-H year.
- _____ Check project leaders on progress.
- _____ Project Leaders conducting project meetings.
- _____ Check club mailbox at the Extension Office.
- _____ Visitors reported to Kate (klittich@ksu.edu).
- _____ Update 4-H Records and Pin Applications.
- _____ Club annual summary up-to-date.
- _____ Work on Fair projects.



Promote/Recruit

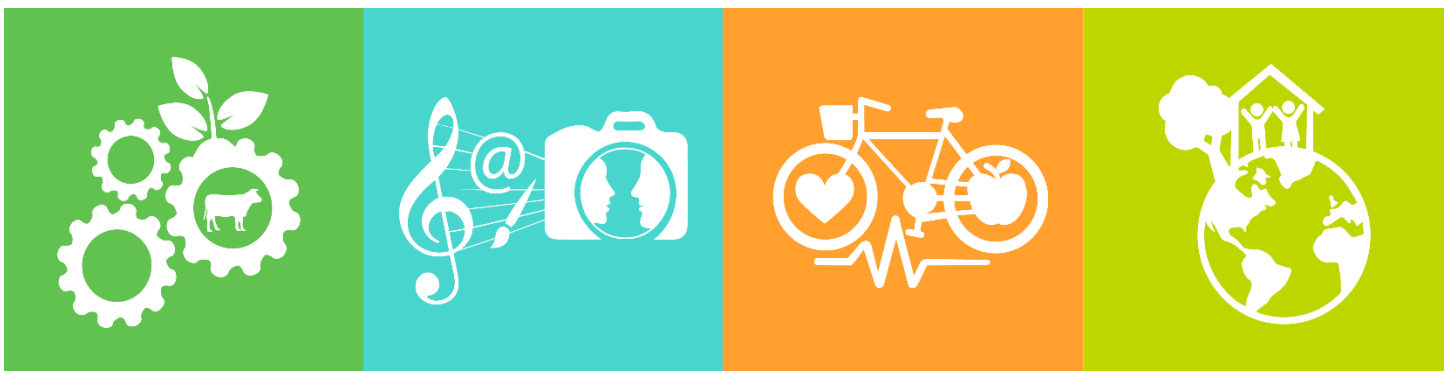
- _____ The Volunteer Registration Process promoted to project leaders and parents.
- _____ 4-H Camp promoted.
- _____ 4-H Discovery Days promoted, June 1-4.
- _____ Encourage Fair Superintendents and Assistants.
- _____ Promote Club Exchange.
- _____ Promote the Leadership Workshop.

Remember

- _____ County Fair Assistant Superintendents and Superintendents submitted online for the Ottawa County Fair and the Tri-Rivers Fair, due April 1.
- _____ New 4-H members enrolled by May 1, returning members enrolled by December 1 to participate in the 4-H Division at the County Fair.
- _____ All 4-H project changes, adds and drops, to 4HOnline by **May 1. Please double check! No late changes accepted.**
- _____ Club representatives should attend 4-H council meeting.
- _____ Horse IDs are due **May 1.**



ORGANIZATIONAL LEADER UPDATE

The next Organizational Leader Update will be held at 7 p.m., Thursday, March 31, via zoom. We will be discussing state policy, county fairs, etc. You won't want to miss this update!







February, 2022

Sunday	Monday	Tuesday	Wednesday	Thursday	Friday	Saturday
		1	2	3 Red Wheel sales DUE for Minneapolis area by 5:00 p.m. to Minneapolis Office	4	5
6	7	8	9	10 Volunteer Screening Orientation, RSVP Due Bring Your 4-H Projects to Life, TBD, 7:00 p.m. CIA Zoom Meeting, 6:00 p.m.	11	12
13	14 	15	16	17 Cloverbud Meeting, 6:30 p.m., Salina Heights Christian Church	18	19 Quiz Bowl, Technology Center, Salina, 8:00 a.m.
20 CIA—Topeka 	21 President's Day Minneapolis Office Closed	22	23	24	25	26 Red Wheel Delivery, Minneapolis Courthouse 9:00 a.m.
27	28					



March, 2022

Sunday	Monday	Tuesday	Wednesday	Thursday	Friday	Saturday
		1 Local 4-H scholarships DUE, online State 4-H scholarships DUE, online	2	3 4-H Club Day cancellations DUE by noon	4 4-H Club Day digital submissions DUE by noon	5 4-H Club Day, Salina South Middle School
6	7 3D Printing Virtual Day Camp, registration DUE, online	8	9 YQCA Training, Minneapolis, Courthouse Meeting Room, 6:30-7:30 p.m.	10 Bring Your 4-H Projects to Life, TBD, 7:00 p.m. YQCA Training, Salina, College Center Conference Room, Salina, 6:30-7:30 p.m. April/May Newsletter articles due to Sarah	11	12 Spring Beef Weigh-In
13 	14	15 3D Printing Virtual Day Camp #1, 2:00 p.m. - 4:00 p.m. Volunteer Screening Orientation , RSVP Due	16 3D Printing Virtual Day Camp #2, 10:00 a.m. - 12:00 p.m.	17 3D Printing Virtual Day Camp #1, 2:00 p.m. - 4:00 p.m. Cloverbud Meeting, 6:30 p.m., Salina Heights Christian Church 	18 3D Printing Virtual Day Camp #2, 10:00 a.m. - 12:00 p.m. 3D Printing Virtual Day Camp Optional Work Session, 2:00 p.m. - 3:30 p.m.	19
20	21	22 Volunteer Screening Orientation, 7:00—9:00 p.m., TBD	23	24 Match Madness 7:00 a.m. - 7:00 p.m. Salina Districtwide Leadership Workshop, registration DUE, online	25	26 Regional 4-H Club Day, Clay Center
27	28 4-H Council, 7:00 p.m., Salina	29 Districtwide Leadership Workshop, Salina, 7:00 p.m. - 8:15 p.m.	30	31 Organizational Leaders' Update, Online via Zoom - 7:00 p.m.	UPCOMING DATES: April 1—Fair Superintendent and Assistant Superintendent Sign-Up DUE Online 23—Central Kansas Beef Show, Salina 27—Sheep/Meat Goat Check-in, Salina, 4:00-6:00 p.m. 28—Sheep/Meat Goat Check-in, Minneapolis, 4:00-6:00 p.m.	



Central Kansas Extension District

Salina Office

K-State Polytechnic
2218 Scanlan Ave
Salina, KS 67401-8196

Address Service Requested

THE 4-H YEAR IN FULL SWING

Dear 4-H Families,

January is over and we are now well into February. Gavel Games, Model Meetings, and Districtwide Committee Training have all been held. Families are preparing for the District 4-H Quiz Bowl and 4-H Club Day contests.

Now is the time to begin planning for the summer months. Lots of fun activities will be coming up for 4-H members to participate in. There will be 4-H camp, some day camps, and other fun things planned. Before you know it, it will be time for county fairs! Be sure to start planning out the summer so your child(ren) can maximize their participation in the activities they want to be a part of. Planning is the key!

As always, it is imperative you keep up on your email messages and read the newsletter. Review rules and schedules of contests. Do not hesitate to ask questions. Ask your club leaders, call the Extension Office, talk to other 4-H families. Let's continue to remember why we do this thing called 4-H. We are still having a positive impact on the lives of youth! Let's not lose site of this.

I would like to extend my gratitude for your understanding as I was out of the office some in November and December with the sudden death of my mother. I appreciate all of the phone calls, text messages, emails, and cards as I go through this difficult time. Thank you!

Sarah

Minneapolis Office • 307 N Concord • Suite 190 • Minneapolis, KS 67467-2140 • 785-392-2147 • Fax 785-392-3605

Salina Office • K-State Polytechnic • 2218 Scanlan Ave • Salina, KS 67401-8196 • 785-309-5850 • Fax 785-309-5851