

centralkansas.k-state.edu/4-H

Central Kansas District 4-H

February, 2018

Sarah E. Maass, M.S.

District Extension Agent
4-H Youth Development
semaass@k-state.edu

Kate Littich

District Program Assistant
4-H Youth Development
klittich@ksu.edu



K-STATE
Research and Extension

K-State Research and Extension is an equal
opportunity provider and employer.

Kansas4-H.org

OFFICE HOLIDAY SCHEDULES FOR 2018

Below you will find the updated holiday schedule for 2018 for both Extension Offices. Some dates have changed due to the new location of the Salina Office and these changes only affect the Salina Office. Please be sure to update your Master 4-H Calendars with this information.

<u>Minneapolis Office</u>		<u>Salina Office</u>	
February 19	Presidents' Day		
May 28	Memorial Day	May 28	Memorial Day
July 4	Independence Day	July 4	Independence Day
September 3	Labor Day	September 3	Labor Day
November 12	Veterans Day	November 12	Veterans Day
November 22 & 23	Thanksgiving	November 22 & 23	Thanksgiving
December 24 & 25	Christmas	December 24 & 25	Christmas

LOCAL 4-H SCHOLARSHIPS

Don't forget, local 4-H scholarships are due March 1. Refer back to the December/January *4-H Newsletter* for more information or visit the District website. Applications can be submitted to either Extension Office. Don't forget to turn in a copy of the Central Kansas District 4-H Scholarship Checklist too.

SEWING MACHINES FOR CHECKOUT FOR 4-H MEMBERS ONLY

The District has three sewing machines for 4-H members to check out (one in Minneapolis and two in Salina). The machines can be checked out for 7 days, or 1 week. Checkout will require a \$100 refundable deposit, with checks made out to CKD Extension. If the 4-H member wants to check out the 1/4 inch foot, that will require an additional \$30 deposit. Individuals MUST allow for time to go through a check out sheet and check in sheet when checking out and returning the sewing machine. Note: The only sewing needles provided are the 80/12 needles. If the 4-H member needs a special needle based on the material he/she will be working with, he/she will need to supply their own.

4-H CLUB DAY INFORMATION

4-H CLUB DAY – FEBRUARY 17

The BIG day is just around the corner!!! Have you been practicing the demonstrations, project talks and talent acts? If not, no time to start like the present! The 4-H Club Day schedule will be posted to the website under 4-H Youth Development in two places: What's Hot and Upcoming Events and Online Registration. A hard copy will be available to you at either Extension Office upon request. An email will be sent to all 4-H families when the 4-H Club Day Program is posted to the website. **Please check the times as soon as you can!** Don't wait until Thursday, February 15. Contact the Extension Office by **noon, Thursday, February 15** for any cancellations.



LOCATION: Salina South Middle School (2015 Simmons Street, Salina, but parking will be off of 4th Street). You'll need to use the South entrance at the back of the building). The doors will be unlocked by 7:30 a.m. Check the schedule for prep rooms! **NO PIANOS OR KEYBOARDS WILL BE PROVIDED FOR PRACTICE! Instrumental solos...warm up in the Commons area or outside.** A concession stand will be available throughout 4-H Club Day for your convenience.

RUN-OFFS FOR REGIONAL 4-H CLUB DAY- If you receive a purple on a demonstration, public speaking or project talk...you may choose to present your public presentation again for a chance to represent the District at 4-H Regional Club Day. Regional run-offs will begin at either 12 p.m. or 12:30 p.m. (will depend on the morning schedule). Don't forget to be prepared to do your demonstration or speech again if you make run-offs. This means to be sure and bring an additional set of ingredients, etc.

NO ANIMALS OR WEAPONS ARE ALLOWED ON SCHOOL GROUNDS. Several questions have been asked about bringing animals and weapons into Salina South Middle School for the purpose of demonstrations during 4-H Club Day. The School District Office has said ***animals or weapons are NOT allowed on school grounds.*** If you are planning on a dog care and training demonstration, etc., please be aware of this. This does not mean that you cannot have a demonstration focusing on an animal project, it just means that you may need to get a little more creative in how you do it. Sarah and Kate would be happy to visit with anyone to help brainstorm some possibilities if anyone needs some help to think through how it could work and how it may look.

4-H Club Day will be fantastic!!!! Stay calm, breathe, and ask questions!

PowerPoint Presentations – Please refer to the 4-H Club Day Rules that were printed in the December/January 4-H Newsletter. Those who choose to utilize the PowerPoint option are responsible for the set-up of the equipment in a timely fashion. Also, the 4-H Club Day Committee does not guarantee that there will be a white space in the room for PowerPoint to be used. Therefore, you are responsible for your own screen OR you can bring white poster board (or foam core board) to use on the easel provided. You will also be responsible for providing your own extension cord. LCD Projectors are available on a first come, first serve basis. You may call the Salina Extension Office (309-5850) to reserve one or sign up at 4-H Club Day. Do not call the Extension Office until you have seen the schedule and can let us know the time you will need it. Thank you for your cooperation!

The How's and Why's of 4-H Club Day....



- 4-H members will be scheduled randomly.
- The judges for Project Talks, Public Speaking and Junior and Senior Demonstrations may select 2-4 purples from their representative rooms. These 8-16 purple winners then have the choice to compete in the afternoon at the 4-H Regional Run-offs. Spontaneous Speaking is not a Regional event, so it does not qualify.
- ***4-H Regional Run-offs begin at either 12 p.m. or 12:30 p.m.*** (will depend on the morning schedule). *Contestants who received purples in the public presentation divisions will be responsible to sign up for a time* if they choose to compete for a spot to represent the Central Kansas District at Regional 4-H Club Day.
- 4-H members are encouraged to visit with the judges following their presentations. The judges are nice and provide some good feedback on ways to improve!
- No pianos or keyboards are available for practice. Instruments may warm-up in the Commons Area or outside.
- ***Each club has been assigned a room (or two) to monitor. Please follow through!***
- **Only committee members are allowed in the 4-H Club Day Office!**

Regional 4-H Club Day has been scheduled for March 24, 2018, at Clay Center

HELP WITH 4-H CLUB DAY PRESENTATIONS

One of the greatest benefits of 4-H is learning to do public presentations! Resources have been added to the 4-H website to help you with the planning and presenting of talks. This information is intended to supplement the 4-H Club Day Guidelines (see the next two pages). Here are the videos that are available at <http://www.centrankansas.ksu.edu/4-h> under 4-H Club Day Information:

- Public Presentation Video – Explanation of the various types of talks
- Demonstration Example #1 Video
- Demonstration Example #2 Video
- Project Talk Example Video
- Public Speaking Example Video

If you have any questions or still cannot find helpful information, please contact Suzanne Hokett, Master 4-H Volunteer at 785-643-6511 or skhokett@designcentralks.com for more personal assistance.

GOT FOOD TO EAT AT 4-H CLUB DAY?

This year at 4-H Club Day there will be a concession stand sponsored by the Rolling Meadows 4-H Club. It will open at 9 a.m. There will be doughnuts, baked goods, pizza (sold by the slice), chips, pop, coffee, and water. Prices will range from \$1 - \$2 each and there will be a meal deal for \$5. Come enjoy a snack or meal while you wait!

4-H CLUB DAY PARTICIPATION INCENTIVES

4-H Club Days is fast approaching, and the Club Days Committee is offering incentives this year to encourage participation. There will be a prize table full of awesome prizes for all ages, and you could win one! For every speech/demonstration, talent event (instrumental, vocal, dance, reading, skit), and group event you participate in, you'll receive a ticket to put in the prize bucket of your choice. You'll also earn a ticket for being a room monitor at your club's assigned room, completing FACS judging school, and participating in the community service activity.

The more you participate, the more chances you have to win! What prizes can you choose from? It's too early to have a complete list, but there will be gift certificates, toys, games, DVDs, electronics, and much more!

OZ-SOME 4-H CAMP

WANTED: CAMP COUNSELORS & JUNIOR CAMP COUNSELORS

If you are currently an 8th grader or older...we need YOU! Camp Counselors are 8th through 12th graders (preference given to older youth). Camp will be June 13-16. Counselor applications are available at either Extension Office and online. Applications will be due **April 13**. All counselor applicants **must** attend the Counselor Training on June 12 and 13 at Rock Springs. Interviews will be scheduled in Minneapolis on April 19 and in Salina on April 16 and April 17. Interviews will be scheduled between 3:00 -5:30 p.m. If these dates and times don't work for you, contact Sarah (semaass@k-state.edu) to set up an appointment for an interview. Camp Counselors will need to complete the 4-H Council Scholarship Application and meet the necessary requirements to be eligible for the 4-H Council Scholarship. The scholarship application is due with the Camp Counselor Application. If the scholarship application is approved, the counselors will not have to pay their registration fee. Please make sure you also begin the Volunteer Screening Process if you have not, or update for 2018 with a renewal.



4-H CAMP

Four action-packed days await 4-H'ers ready for exploring Rock Springs 4-H Center, June 13-16! Meet new and old friends to enjoy swimming, canoeing and horseback riding when you sign up for 4-H camp.

Who can go? 4-H members and their friends who have or will be completing grades 3-7 may attend.

The cost for a regular camper is \$223 or \$123 with the scholarship.

BUS FOR 4-H CAMP

4-H Members will ride the bus for free. Non 4-H members will be charged a \$5 fee.

4-H ROOKIE CAMP

Come one come all 1st and 2nd graders for an overnight camp. Enjoy swimming, horseback riding and more. This is based on a first come, first served basis, so register early to secure your spot!

This year there will be two sessions for Rookie Camp. The first group will be June 13-14. The second group will be June 15-16. When you register online for camp, you will be asked if there is a session that WILL NOT work for your child(ren). All efforts will be made to accommodate the request above, but there will be no session preference guarantee. After the registration deadline, you will receive notification for which session your child(ren) has been placed.

The cost for a rookie camper will be \$108 or \$38 with the scholarship.

IMPORTANT! Registration for 4-H Camp will be online AND we will be using Camp Doc again for the medical information process. More registration information and deadlines will be forthcoming in the March 4-H newsletter.

CAMP THEME: PIRATES OF THE CAMP-IBBEAN

This year's 4-H camp theme is *Pirates of the Camp-ibbean*. To add some fun to camp, if we increase our camp numbers by 10 campers this year, campers will see Sarah "walk the plank" into the cool pool during 4-H camp. We need 75 youth to register for camp to make this happen! Be sure to sign up for camp and invite your friends to attend too!

SCHOLARSHIP INFORMATION – CAMPERS AND COUNSELORS

Campers will need to complete the 4-H Council Scholarship Application and meet the necessary requirements to be eligible for the 4-H Council Scholarship. The scholarship application will include a paragraph on "Why I want to attend camp." Scholarship sponsors include: 4-H Council, Ottawa County 4-H Foundation, Salina Downtown Lions and Saline County 4-H Development Fund. **The completed scholarship application will be due by the camp registration deadline (remember, it requires an organizational leader signature and the 4-H'er signature).** Don't miss out on this fun adventure!

Remember...all campers will ride the bus. Full-time campers will ride it to and from. First session rookie campers will ride it to camp and someone will need to pick them up. Second session rookie campers will need their own transportation to camp, and then they will ride the bus home.

If your child(ren) have meds, they will need to be checked in with the Ambassadors at the time of loading the bus.

It will then be given to the nurses when the buses get to camp.

WANTED: BUS DRIVERS FOR 4-H CAMP

Do you have a CDL-B license with passenger and school bus endorsement? Would you be available and interested in helping drive youth to 4-H Camp on June 13 and back home on June 16? If not you, do you know someone who does? If so, please contact Sarah (semaass@k-state.edu) soon. Note: Defensive Driving and First Aid training are preferred but are not required.



CAMP NURSES

We are looking for individuals willing to attend 4-H Camp as one of three camp nurses. If you are interested, please contact Sarah (semaass@k-state.edu).



RED WHEEL FUNDRAISER UPDATE

Minneapolis – Red Wheel sales concluded on January 31. Leaders are to get the club's totals in to the Minneapolis Office by Wednesday, February 7, noon. The delivery date is Saturday, February 24 at the Minneapolis Extension Office.

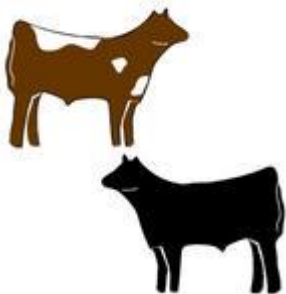
SARAH IN THE MINNEAPOLIS OFFICE

Sarah will be in the Minneapolis Office on Monday, February 12 and from 9 a.m. – 3 p.m. on March 1 from 8:30 a.m. – 4 p.m. Be sure to come by and see her to express any concerns, new ideas, or just to visit.

BEEF CHECK-IN FOR DISTRICT BEEF PROJECT MEMBERS

Beef Check-in will be **Saturday, March 10**. From 8:30 -11 a.m. we will be at Glenn Engelland's Farm (4399 W. Watkins Rd, Salina – from the I-70 exit go north 1 1/2 miles on Halstead, turn left or west on to Watkins Rd. for 1 1/2 miles). Farm located on the south side of the road. We will also be checking-in from 1-3 p.m. at Spencer Schrader's (2118 Oxbow Rd, Wells). From Wells, go north to Mulberry Rd, then east 2/3 mile to 210 Rd, then north 2 miles, and then east on Oxbow Road. The farm is located on the south side of the road. Regardless of where you plan to go, please call 309-5850 for a time by **Thursday, March 8**. Both check-ins are open to all District 4-H Members. At both sites we will be weighing, tagging market animals and tagging and tattooing Commercial Heifers, if needed. Commercial heifers that will not be nominated to attend state shows can be tagged at home (will need to purchase tags from the Extension Office) and photo taken showing the heifer with the tag in the ear by May 1. Registered heifers do not have to be checked in or nominated. When you call for a time, be sure to let the office know if you would like your animals nominated to show at the Kansas State Fair and/or the Junior Livestock Show (cost is to be determined). All animals will have an official "Kansas 4-H" ear tag put in the ear at a cost of \$3.50/tag.

CENTRAL KANSAS CLASSIC BEEF SHOW



This "Blow and Go" show will be held on Saturday, April 14. The show is open to any bonafide 4-H and FFA members who have not yet reached their 19th birthday before January 1, 2018. There will be a special class for the 4-H'ers enrolled in a club in the Central Kansas District. The entry fee is \$15 per head, but after March 30 the fee will increase to \$20 per head. All fees must accompany registration. For registration information, please go to the District website (<http://www.centrankansas.ksu.edu>), click on 4-H Youth and Development on the left hand side, and a flyer will be located under Upcoming Events and Online Registration. A concession stand will also be available for your convenience at this show.

TRI-RIVERS FAIRBOARD FUNDRAISER

The Tri-Rivers Fairboard would like to invite you to join the Dillon's Community Rewards Program which donates a percentage of your total Dillons bill to the Saline County Fair Association (Fairboard) which we use to support 4-H. You may sign up at: <http://www.dillons.com/communityrewards>

LEADERSHIP OPPORTUNITIES

4-H COUNCIL

March Meeting

The March 4-H Council Meeting will be held on Monday, March 26, at 7 p.m. in Salina. This will be the first 4-H Council meeting held at a NEW location in Salina. This meeting will be held in the College Center, room 103 (College Center Conference Room). If you refer to the K-State Polytechnic Campus Map in the December / January 4-H Newsletter (or go to <http://polytechnic.k-state.edu/admissions/CampusMap.pdf>), you will see the College Center Building as #8. Take the main campus entrance (located between Tony's Road and Magnolia Road). Take the first left and park in that parking lot (B-1). No tickets will be given after 5 p.m. DO NOT park in handicap, reserved, or metered parking, otherwise you may receive a ticket. The College Center will be the building to the north. Once you enter the building, make a left and go down the hallway past the bathrooms and enter the room directly in front of you.

May Meeting

The May 4-H Council Meeting will be held on Thursday, May 24, at 7 p.m. in Minneapolis. This date has been changed from the regular meeting time due to the Memorial Day Holiday.

2018 CENTRAL KANSAS DISTRICT 4-H AMBASSADORS

Congratulations to the Central Kansas District 4-H Ambassadors who will be installed the end of this month:

Anya Pohl, Friendly Valley
Kaylee Heimer, Gypsum Valley
Nathan Weiss, Sunny Valley

Continuing Ambassadors are:

Kyler Cox, Sunny Valley
Adelaide Easter, Sunny Valley
Jeannie George, Sunny Valley
Sydney Hynes, Cardinal

Erin Lange, Cardinal
Sarah Repp, Friendly Valley
Trista Stevenson, Cardinal
Savannah Zink, Friendly Valley

VOLUNTEER SCREENING ORIENTATION

The next Volunteer Screening Orientation is scheduled for Thursday, March 15, from 7 – 9 p.m. Online “RSVP” will be due on Thursday, March 8. The link can be found at <http://www.centrankansas.ksu.edu/4-h>, under Upcoming Events and Online Registration. If you do not have access to the web, please contact either Extension Office. If there are not enough individuals interested, it will be cancelled and those that sign up by the deadline will be notified. ***This is the Orientation that any potential 4-H Camp Counselors should plan to attend if they have not already attended an Orientation previously.***

SAVE THE DATE – 48 HOURS OF 4-H

48 Hours of 4-H will be held the weekend of October 13-15, 2018. Save the date now and join us this fall in seeing just how much we can give back to our communities! Invite your friends, clubs, adult volunteers, and 4-H alums too! If these dates create a conflict for your club, don't worry, plan a project for another weekend in October!



4-H NEWSLETTER DEADLINES FOR 2018

If you have something you would like in the *4-H Newsletter*, be sure to email it to semaass@k-state.edu. The deadline for March is February 7; and for April is March 9.



FOSTER CHILDREN GRANTS AVAILABLE FOR 4-H PROJECTS AND CAMP



Kansas 4-H Youth Development, the Kansas 4-H Foundation and Saint Francis Community Services are working together to provide funding opportunities for children and families involved with foster care. The purpose of the Kansas 4-H Resource Family Project and Camp Grant Programs is to provide financial assistance for foster youth and their resource families who want to participate in learning opportunities available through 4-H. Through the Kansas 4-H Foundation, \$5,000 in grant funds are available to support foster care families and the children in their care who are current or potential 4-H members. **Grants due May 1!**

Family Project Grants

- Children must enroll as 4-H members through their Local Extension Office.
- Eligible 4-H member can only apply for one 4-H project and one 4-H camp grant per year.
- Grant funds are for the purpose of starting or enhancing a 4-H project during the 4-H year such as purchasing a camera, craft supplies, clothing, feed, equipment, etc.
- Eligible 4-H member may request funds for supplies and equipment needed for participating in a pet or livestock project; however, funds are not available for the purchase of pets or livestock.
- Grant funding cannot include meal expenses.
- Items and supplies purchased from grant funding for 4-H project become the property of the eligible 4-H member.
- Liability, maintenance and warranty of the items and supplies purchased become the responsibility of the eligible 4-H member.
- Grant application and instructions available on the Kansas 4-H Website, [http://www.kansas4-h.org/events-activities/camping/county-camps/docs/Foster Children Grant Application.pdf](http://www.kansas4-h.org/events-activities/camping/county-camps/docs/Foster_Children_Grant_Application.pdf)

DISTRICTWIDE NEW 4-H FAMILIES MEETING

New to 4-H in the last 3 years? Plan to attend a new 4-H family meeting on **Monday, February 26 from 7-8:15 p.m.** The location of this meeting will be based off of those who register. An email will be sent after the registration deadline to inform the participants of the location. This meeting is for new families and anyone who would like to attend to have a refresher course on what 4-H has to offer their child(ren) and the volunteer opportunities that exist. Please bring your questions to this meeting. We will discuss a number of things ranging from what 4-H Club Day is to what is involved in the Volunteer Screening process and why it is important. We'll go over the scholarships that are available to 4-H'ers to attend 4-H Camp and other trips. We'll talk about Districtwide activities, state activities and the importance of record books. Know what a KAP is? Don't worry if you do not, as we will discuss that as well. We ask that individuals RSVP for this meeting **by Monday, February 19**. To RSVP, go to <http://centralkansas.ksu.edu/4-h> and click on the link under "Upcoming Events and Online Registration." We hope to see you on February 26.



4-H ALIEN ADVENTURE EXPERIENCE

The Kansas 4-H SpaceTech Program and the Kansas Cosmosphere located in Hutchinson are again teaming up to provide fun, hands-on and science-based programming for Kansas 4-H Youth Development. This third program will feature “The Alien Adventure.” The experience will begin Friday, April 6, at 4 p.m., and will end on Saturday, April 7, 4 p.m. Cost will be \$110 for youth between 9-18-years old and \$110 for all adult participants. All youth must have a designated chaperone to attend. Parents, grandparents, other relatives, and guardians may chaperone their own children/relatives. They may not chaperone other non-family members. Adult chaperones will be responsible for their children overnight.



Registration includes three meals, two breaks, and an overnight stay. Program topics include: a tour of the Cosmosphere, doing experiments and microscope examinations to learn about what makes something alive, finding out how scientists are searching for life in our solar system, learning about the search for extra-solar plants, decoding alien messages, and developing an alien species with its own unique planet and culture, plus much more.

This Cosmosphere collaboration is designed to be an adult-child experience, where 4-H members and adults can interact and learn from these fun and educational experiences. The program will include overnight indoor camping at the Cosmosphere located in Hutchinson, KS, (bring your own sleeping bag, air mattress, pillow, towel and toiletry items). The experience is open to 4-H members, parents, grandparents and volunteer 4-H leaders.

To register, go to <http://www.centrankansas.ksu.edu/4-h> and click on the “State 4-H Registration” link on the lower right hand side of the page. Registration will open on February 1 and close March 22. The registration fee and 4-H Council Scholarship Application will be due no later than 5 p.m. on March 22. At the time of composing this newsletter, the 4-H Council Scholarship amount is unknown. There will be a minimum number required or the experience will be cancelled. The program is limited to the first 60 who register on a first-come, first-serve basis.

4-H PHOTOGRAPHY WORKSHOP



Shawnee County is hosting a 4-H Photography workshop on Saturday, April 14, in Auburn, KS. There will be a photography judging contest and workshops. Registration is due March 1, 2018. For more information, please go to <http://www.shawnee.k-state.edu/4-h/2-2018%20Photo%20workshop%20flyer.docx> For questions, please call the Shawnee County Extension Office at 785-232-0062.

SAVE THE DATE: OTTAWA COUNTY FAIR

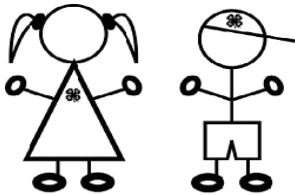
The Ottawa County Fair will be held on July 17-21, 2018. Please be sure and put these dates on your calendar.

4-H COUNCIL SCHOLARSHIPS

4-H Council scholarships are available for numerous 4-H sponsored events. If you are interested in receiving a scholarship, it is important that you not only complete the 4-H Council Scholarship Application (<http://www.centrankansas.k-state.edu/4-h/documents/Scholarship%20Application.doc>), but that it is submitted to either Extension Office at the same time you pay the registration fee. ***Any applications received after the registration deadline will not be considered for a scholarship.***

CLOVERBUD MEETINGS SCHEDULED

Come join us for Districtwide Cloverbud Meetings. Please RSVP for EACH meeting to Linda Lecklider at 823-2409 or Linda.lecklider@gmail.com. Meetings will be from 6:30 – 7:30 p.m. All meetings will be in Conference Room at the Salina Extension Office. If there is interest in having meetings held in Minneapolis, please contact Linda. Depending on the activities, participants may be asked to bring supplies or donate a small fee. You will be notified of any cancellations (if you RSVP).



February 8	May 10
March 8	June 14
April 12	July 12

KANSAS 4-H SHOOTING SPORTS AGE



The Kansas 4-H Shooting Sports program adheres to the National Shooting Sports Policies. The national policy regarding youth participation is stated as follows:

"4-H Shooting Sports Programs are open to all youth 8 years of age or older (as of Jan. 1 of the current year) without regard to race, color, sex, handicap, religion, age or national origin. Each state Land Grant University determines 4-H maximum age eligibility. Note that age eligibility for National 4-H Shooting Sports Events are determined by the National 4-H Shooting Sports Committee and may be different than that of states. 4-H Clovers (age 5-7) are not eligible for any aspect of 4-H shooting sports programs as these are not age appropriate activities."

Inappropriate activities include attending shooting sports meetings and practices. 4HOnline does not allow youth under age 8 to enroll in 4-H Shooting Sports.

GLAMOUR TEES WORKSHOP



Join us as we get creative with Tee shirts on **Saturday, March 3 from 9 a.m. - 4 p.m.** at Trinity Lutheran Church in Salina (corner of 9th Street and Crawford Street).

This workshop is for all ages and will have a registration fee of \$10/participant. Basic sewing machine skills are helpful. We will decorate and redesign basic Tee shirts. Participants will need to provide their own Tee shirt and a sack lunch. Other materials will be provided.

To register, please go to <http://www.centrankansas.ksu.edu/4-h> and you will find a link under Upcoming Events and Online Registration. Registration and the \$10 fee will be due to either Extension Office **no later than 5 p.m. on February 23.**

To see Glamour Tee Shirt possibilities see the link under Upcoming Events and Online Registration.

If you have any questions, please contact Grace Pfannenstiel at gaylepf@cox.net.

RECYCLE/ REPURPOSE WORKSHOP



Let's get creative and make something old, new! Join us for this workshop on **Saturday March 17 from 9 a.m. - 4 p.m.** at Trinity Lutheran Church in Salina (corner of 9th Street and Crawford Street).

If you would like help choosing clothing to recycle then meet us at the Goodwill on Friday evening March 16 at 5:30 p.m. Otherwise bring garments, patterns, and ideas to the workshop on Saturday. Participants also need to bring a sack lunch and a camera to take before and after photos.

All ages are welcome but basic machine sewing skills are required (those with limited skills will need an adult to attend with them). There will be a \$10/participant registration fee.

To register, please go to <http://www.centrankansas.ksu.edu/4-h> and you will find a link under Upcoming Events and Online Registration. Registration and the \$10 fee will be due to either Extension **Office no later than 5 p.m. on March 9.**

If you have any questions, please contact Grace Pfannenstiel at gaylepf@cox.net.



DISTRICT 4-H HORSE NEWS

Horse IDs

There is a NEW Horse ID Form that needs to be used for the 2017-18 4-H Year. A link to the new Horse ID Form can be found at <http://www.centrankansas.ksu.edu/4-H> under 4-H'er Forms and Documents, "Horse ID." Be sure and check the back page, lower right hand corner for the October, 2017 date to ensure you have the correct form.

Items to note:

- The form **MUST BE** front and back of one page, not 2 pages.
- A standard size picture **MUST BE** attached. The picture should include all 4 legs and feet showing a profile of the horse with the head turned toward the camera. **ALL** markings must be clearly visible.
- Members, Parent/Guardian, Owners (if horse is leased) and County Agents **MUST** sign and date.
- The **ORIGINAL** 4-H Horse Identification Certificate **MUST** accompany the 4-H'er. The county office and project leader may have a photocopy.
- This form can be signed anytime between now and May 1, 2018.

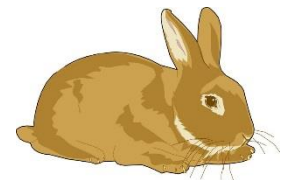
If you have any questions, please don't hesitate to contact the Extension Office.

Horse Level Testing

Anyone wanting to take levels tests before District Horse Show Entries are due (June 1, 2018), should be studying for them now and then contact Bev so that a time may be set up to take the test. You can email Bev at classy3560@gmail.com

SAVE THE DATE: SPRING RABBIT SHOW

The Central Kansas District will host a statewide Spring Rabbit Show on Saturday, April 14, starting around 8 a. m. This will be a great opportunity to show your rabbits at a home show, as well as participate in showmanship, breed ID, and a judging contest. We will also be needing lots of help to put this on. Questions or to offer your assistance, please contact:



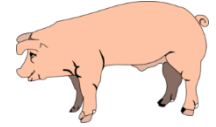
Lindi Fahrenthold, 785-826-5980, lfahrenthold@yahoo.com

Amber Pracht, 785-212-5000, prachtamber@gmail.com

Klaira Thelander, 785-822-2003, acmefarm@sbcglobal.net

ATTENTION 4-H MEMBERS ENROLLED IN SWINE

All youth who wish to exhibit swine at the Kansas State Fair, the Kansas Junior Livestock Show, or Tri-Rivers Fair must go through a certification training. An email will be sent to you from Carl Garten as soon as details become available.



SAVE THE DATE: BEEF PROJECT MEETING

A beef project meeting will be held after weigh in at the Schrader Farm. The meeting will consist of going over feeding strategies for hitting target fair weights based from March weigh-in weights. There will also be a few judging classes available. Please watch your email for additional details as they become available.

OUR SPRING FUNDRAISER HAS ARRIVED!



The Mixed Bag Fundraiser catalogs and fundraiser packets were distributed at the January District 4-H Council meeting and organizational leaders can pick them up at the Extension Offices if they were not picked up at 4-H Council. The large variety of bags, totes, and kitchen gadgets should make sales a breeze. Orders and money will be due to your club leaders before April 3. Items will be ready for pick up by Organizational Leaders between May 2-4 from the Extension Office. Please direct any questions to

Robyn Prickett at robynprickettks@gmail.com or 785-493-0014.

MATCH MADNESS

On Thursday, March 15 from 7 a.m. – 7 p.m. we will have an opportunity to donate money to the Saline County 4-H Development Fund at the new Salina Fieldhouse OR online at <http://matchmadnessGSCF.org>. At this event the Greater Salina Community foundation will MATCH the money you donate. This means extra “free” money for 4-H programs! We encourage your 4-H Club or individuals that wish to support 4-H’ers, to stop by the event with their donation, and take advantage of this opportunity to expand your contribution with these matching funds. Please put March 15 on your calendar!

4-H QUIZ BOWL OPPORTUNITY

Would you be interested in participating in a 4-H Quiz Bowl? A 4-H quiz bowl offers an opportunity for members to increase and share their 4-H knowledge and skills in a semi-competitive setting. A quiz bowl is not meant to be a memorization process. It is meant to provide a fun way to encourage members to learn about all aspects of 4-H, including officer information, parliamentary procedure, project information, history, and other fun facts about 4-H.

How does a Quiz Bowl work? Each quiz bowl round consists of two 3-member teams in the same age category, competing to answer a variety of questions. Junior division rounds consist of 10 questions, and Senior division 15 questions. The first team to answer the question correctly is awarded points. Teams are split into two age categories: Junior 7-12 and Senior 13-18.

This would be a great opportunity to mark a requirement off on your Member Achievement Plan! If you are interested, please contact Michele Hennes at mmljhennes@cox.net or Angie Redden at mredde1@eaglecom.net.

DISTRICTWIDE PROJECT LEADERS

Below are listed District Project Leaders which hold meetings throughout the year to help you with your projects. Check the newsletter for meeting dates and times or you may contact these leaders to find out the next meeting date, time and location. All phone numbers use the 785 area code unless otherwise indicated.

<u>Project</u>	<u>Name</u>	<u>Phone #</u>	<u>Email</u>
Beef	Spencer, Laci, Weston, & Josi Schrader	488-2135	schrader@twinvalley.net
Beef	Kyler Cox	643-1039 (cell)	kylercox19@gmail.com
Citizenship	Kyler Cox	643-1039 (cell)	kylercox19@gmail.com
Clothing & Textiles/ Community Service and Quilting	Mary Bernhardt	825-7762	mary_bernhardt@cox.net
CO2 Car	Terry & Leigh Ann Montoy	577-7966 (cell)	tnlmontoy@sbcglobal.net
Dairy Goat	Ella & Sarah Tracy	612-396-6808	jasontracy72@hotmail.com
Dog Care & Training	Sarah, Madison, & Tracy Repp	227-5647 (cell)	k9capersckd4h@gmail.com
Dog Care & Training	Rebekah, Eric, Morgan, & Diana Thompson	452-2234 (cell)	k9capersckd4h@gmail.com
Entomology	Gayle Pfannenstiel	827-7649 (cell)	gaylepf@cox.net
Geology	Lois Larson	227-2681 (home) / 212-1440 (cell)	loisllarson@gmail.com
Home Environment	Rebekah & Diana Thompson	577-7682 (cell) / 452-2234 (cell)	ltfarms5@gmail.com
Home Environment	Grace Pfannenstiel	376-2816 (cell) / 827-7649 (home)	gracepf28@icloud.com
Horse	Jennifer Watkins	452-5710 (cell)	watkins9468@yahoo.com
Horse	Bev Seuser	823-8923 (home) / 643-0754 (cell)	classy3560@gmail.com
Horticulture Judging	Curtis & Erin McKain	523-0127	cemckain@twinvalley.net
Leadership	Kyler Cox	643-1039 (cell)	kylercox19@gmail.com
Poultry	Hannah & Katrina Fahrenthold	822-7810	hannahfarenthold@gmail.com
Poultry	Hannah & Katrina Fahrenthold	822-7810	lfahrenthold@yahoo.com
Poultry	Klaira Thelander	823-2003	ktsrabbitranch@gmail.com
Rabbit	Jessica & Katrina Fahrenthold	826-5980	lfahrenthold@yahoo.com
Rabbit	Camisha Stevenson	829-0965	stevensoncamisha@yahoo.com
Rabbit	Klaira Thelander	823-2003	ktsrabbitranch@gmail.com
Reading	Amber Pracht	212-5000	prachtamber@gmail.com
Space Tech: Rocketry	Jeff Shamburg	438-9500	jshamburg@gmail.com
Shooting Sports: Shotgun	Eric Klein	392-0368	herbie57_57@hotmail.com



EXTRA

NEWS FOR CENTRAL KANSAS DISTRICT ORGANIZATIONAL LEADERS

FEBRUARY CHECK-UP

Five months into the 2017-18 4-H year...where has the time gone? Are you ready for the monthly check-up?

Review

- ___ 4-H Club Day Monitor roles reviewed with club members.
- ___ **4-H Club Day Run-Offs explained to the 4-H members.** Run-Offs conducted Saturday, February 17, following 4-H Club Day.
- ___ 4-H Newsletter read and important dates marked on calendar.
- ___ Review highlights from the 4-H Newsletter at club meeting.

To-Do

- ___ Volunteer Service Application and Renewal Form completed on all project leaders.
- ___ Project Leaders conducting project meetings.
- ___ 4-H Club members inviting friends to join 4-H. Parents encouraging other parents to explore 4-H.
- ___ Check club mailbox at the Extension Office.
- ___ Report from the January 4-H council meeting.
- ___ Encourage 4-H members to update their Achievement Pins and Permanent Records.
- ___ Check club's progress toward goals.
- ___ Visitors' reported to Kate (klittich@ksu.edu)

Promote/Recruit

- ___ 4-H members encouraged to participate in judging contest(s) at 4-H Club Day. 4-H members should be knowledgeable about filling out Judging Cards after a short lesson during club meeting. Judging Card example available for check-out at the Salina Office.
- ___ 4-H Camp Counselors recruited
- ___ 4-H Camp promoted, June 13-16; Rookie Camp promoted, two sessions, Rock Springs. Registration due TBA.
- ___ 4-H Discovery Days promoted, May 29-June 1, 2018. Registration open March 1.

Remember



- ___ Reminder... if needing to cancel from 4-H Club Day, please call the Salina Extension Office by NOON, Thursday, February 15.
- ___ 4-H Club Day at Salina South Middle School, 2015 Simmons (parking and entrance off of 4th Street), February 17.
- ___ 4-H Club Day contestants reminded that **NO PIANO OR KEYBOARD** is available for practice.

ORGANIZATIONAL LEADER UPDATE – DATE CHANGE FOR APRIL

Due to a scheduling conflict and overlapping with the Sunny Valley 4-H Club Meeting, the next Organizational Leader Update will be held at 7 p.m., Tuesday, April 3, on the K-State Polytechnic Campus (location TBA). Please change this date in your calendars.

February, 2018



Sunday	Monday	Tuesday	Wednesday	Thursday	Friday	Saturday
UPCOMING DATES: March 1 – Local 4-H scholarships and checklist due, either Extension Office 1 – Registration due for Photography workshop, Auburn, KS 1 – Sarah in Minneapolis Office 3 – Glamour Tees Workshop, 9:00 a.m. – 4:00 p.m., Trinity Lutheran Church, Salina 8 – Online RSVP due for Volunteer Screening Orientation 9 – April newsletter articles due to Sarah 10 – Beef check-in 8:30 – 11:00 a.m., Engelland Farm, 1:00-3:00 p.m., Schrader Farm 15 – Match Madness, 7:00 a.m. – 7:00 p.m., Salina Fieldhouse or online 15 – Volunteer Screening Orientation, 7:00-9:00 p.m. 17 – Recycle/Repurpose Workshop, 9:00 a.m. – 4:00 p.m., Trinity Lutheran Church, Salina 24 – Regional 4-H Club Day, Clay Center 26 – 4-H Council Meeting, 7:00 p.m., Salina				1 Registration opens for “The Alien Adventure”	2 Area KAP Screening, Manhattan Gavel Games/Model Meetings, Technology Center, KSU Polytechnic 	3
4	5	6	7 March newsletter articles due to Sarah	8 DW Cloverbud meeting, 6:30 – 7:30 p.m., Salina	9	10
11	12 Sarah in Minneapolis Office	13	14	15 4-H Club day cancellation due by 12:00 p.m.	16	17 4-H Club Day Salina South Middle School
18 CIA, Topeka 	19 RSVP due online, New Family meeting Minneapolis office closed	20	21	22	23 Registration due for Glamour Tees Workshop, 5:00 p.m. State Ambassador training, Rock Spgs 	24 Red Wheel delivery, Minneapolis
25	26 New Family meeting, 7:00 – 8:15 p.m., location tba	27	28			



Central Kansas Extension District

Salina Office

K-State Polytechnic
2218 Scanlan Ave
Salina, KS 67401-8196

Address Service Requested

GAVEL GAMES, MODEL MEETINGS, & 4-H CLUB DAY

Dear 4-H Families,

There are a lot of contests taking place this month. Please be sure to review the rules and schedules ahead of time to make sure you are prepared. Do not hesitate to ask questions. Ask your club leaders, call the Extension Office, talk to families in 4-H who have participated in these contests. If you need to cancel, please contact the Extension Office and anyone else (i.e., team members) who may need to know. Remember, the purpose of these contests is for learning and growing. The participants receive immediate feedback and can turn around and apply it.

Don't forget, these contests should also be a fun experience for the youth!

Good luck to everyone this month!

Sarah

Minneapolis Office • 307 N Concord • Suite 190 • Minneapolis, KS 67467-2140 • 785-392-2147 • Fax 785-392-3605

Salina Office • K-State Polytechnic • 2218 Scanlan Ave • Salina, KS 67401-8196 • 785-309-5850 • Fax 785-309-5851