

Agriculture

CENTRAL KANSAS EXTENSION DISTRICT NEWS

centralkansas.ksu.edu

September 2020

Upcoming Events

September

- 18 Fall Field Day, South of Lindsey, Kansas

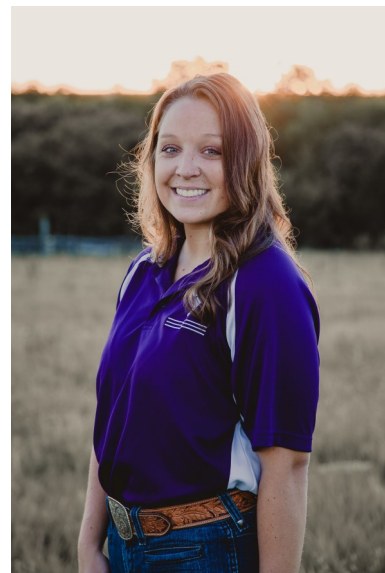
CKD Welcomes New Livestock Production Agent

Hello all! My name is Justine Henderson and I am so excited to be a part of the Central Kansas District Extension team. I am originally from Northern California where I was born and raised on a commercial cattle operation. I received my undergraduate degree in Animal Science from California State University, Chico where I was involved with the University Farm, Young Cattlemen's Association, and was a member of the Livestock Judging Team.

Post-graduation, I interned with the Colorado State Beef Improvement Center in Saratoga, WY where I was responsible for haying, calving out cows and heifers, and participating in research on High Altitude Disease in Angus cattle. It was this research experience that influenced me to go to graduate school. For the last two years, I have pursued a master's degree at Kansas State University in Animal Breeding and Genetics. My studies focus on the genetics of pulmonary arterial pressure in Simmental cattle at high altitudes.

I am excited to be involved in a profession that combines my love for the livestock industry and passion for science and research. I have not been on the job for very long but can tell I am going to love what I am doing.

If you have any livestock production questions, please feel free to call me at the extension office in Minneapolis at 785-392-2147 or email me at jwho4@ksu.edu. I would be happy to help in any way I can!



K-STATE
Research and Extension

K-State Research and Extension is an equal
opportunity provider and employer.

ksre.k-state.edu

Kansas State University Agricultural Experiment Station and Cooperative Extension Service

Online Meetings

Learning opportunities via the internet is becoming a more common occurrence. One instance is a wheat pre-plant meeting hosted in McPherson County; another is a dual-purpose wheat video. We still intend to host in-person events, though having recorded meetings creates flexibility in schedules. If you would like the link to these recordings or added to the email list please call the extension office (785)-309-5850.



China Seeds

In the past several weeks, we have multiple reports of people receiving packages of seeds from China. If you find a package of seed in the mail, please do not plant them and call Kansas Department of Agriculture at (785) 564-6698.

Local Weather Information



If you are interested in local weather, the Cocorahs network might interest you. Cocorahs is a network of people who measure precipitation across the state. Currently, we have 20 volunteers in Saline County

and soon to be 4 in Ottawa County. If you are interested in helping measure the variability of moisture across our district or viewing the results, go to www.cocorahs.org. When you join CoCoRaHS our state climatologist Marry Knapp will send you a 4-inch rain gauge to record your precipitation accurately. You can also find this information and Kansas mesonet data on the CKD Crops page under the weather tab. If you have questions please call the Extension office 785-309-5850.

Managing the Details

So many times, I find myself concerned with things outside my control. It is human nature for a farmer to worry about the rain, and many times the weather is the limiting factor in our Kansas dryland farms. This fact does not diminish the reality of things within our control often limit yield potential.

Fall wheat sowing will be underway in a few weeks, so here are some things you should consider. Have you controlled the volunteer wheat in your fields? An outbreak of wheat streak mosaic could destroy the majority of yield potential and possibly all the profit potential for you and the neighboring fields.

Do you have a good understanding of the soil's fertility? Having the correct nutrients in place and available to next year's crop is essential.

Am I comfortable with the quality of the seed wheat being free of weeds and have good germination? Does it possess the genetic potential to handle stress and yield well? Do I need to Clearfield or CoAxiom variety to manage a particular grassy weed issue? Choosing the proper seed for your farm is a key decision.

Is the drill in proper working order so that you can get consistent seeding depth across the different soil types? Seed placement is critical in root development and the very foundation of the crop. Nutrient uptake, tiller development, and ultimately yield is a direct result of the crop root system.

Managing the details, we can take out yield-limiting factors, as these issues become magnified with the stress of our Kansas climate. Farming is full of small detailed decisions and one particular component could make for profitable or costly consequences.

Fall Field Day

Kansas State Research and Extension Central Kansas District

Friday, September 18, 2020 @ 8:30 A.M.

Soybean and Grain Sorghum Plots

Breakfast Burritos and Bottled Drinks served at 8:30

Field Day Starts at 9:00

**Field Location: 3/4 mile South of Lindsey, Kansas, Ottawa County
From 106 Hwy east of Minneapolis, turn south on 135th Road
(Old 81 Highway) 2.5 miles to the plot.**

Speakers:

Dr. Stu Duncan - North East Agronomy Specialist

Dr. Sarah Lancaster - Weed Science Specialist

Dr. Jeff Whitworth - Entomologist

NO COST, RSVP not required
though encouraged, as it helps with
the food planning. Please call either
extension office.

Minneapolis (785) 392-2147

Salina (785) 309-5850

Due to concerns about the spread of Covid-19, this
event will follow Kansas State University guidelines.
Our event will take place outdoors with social distancing
in place. If social distancing is not possible, participants
should wear a mask.



K-STATE
Research and Extension

Central Kansas
District

Kansas State University is committed to making its services, activities and programs accessible to all participants.
If you have special requirements due to a physical, vision, or hearing disability, contact Jay Wisbey, (785) 309-5850
Kansas State University Agricultural Experiment Station and Cooperative Extension Service
K-State Research and Extension is an equal opportunity provider and employer.

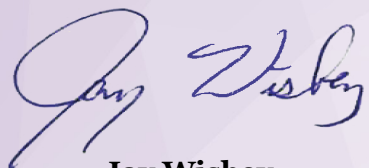
**Central Kansas Extension District
Minneapolis Office**

307 N. Concord, Suite 190
Minneapolis, KS 67467-2129

Address Service Requested

The enclosed material is for your information. If we can be of further assistance, feel free to call or drop by the Extension Office.

Sincerely,



Jay Wisbey
District Extension Agent
Crop Production
jwisbey@ksu.edu

Salina Office
K-State Polytechnic
2218 Scanlan Ave.
Salina, KS 67401-8196
785-309-5850
Fax: 785-309-5851



Justine Henderson
District Extension Agent
Livestock Production
jwh04@ksu.edu

Minneapolis Office
307 N. Concord, Suite 190
Minneapolis, KS 67467
785-392-2147
Fax: 785-392-3605